

CERTIFICATE OF LOCATION OF GOVERNMENT CORNER

County of Anoka

State of Minnesota

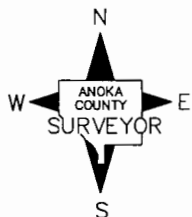
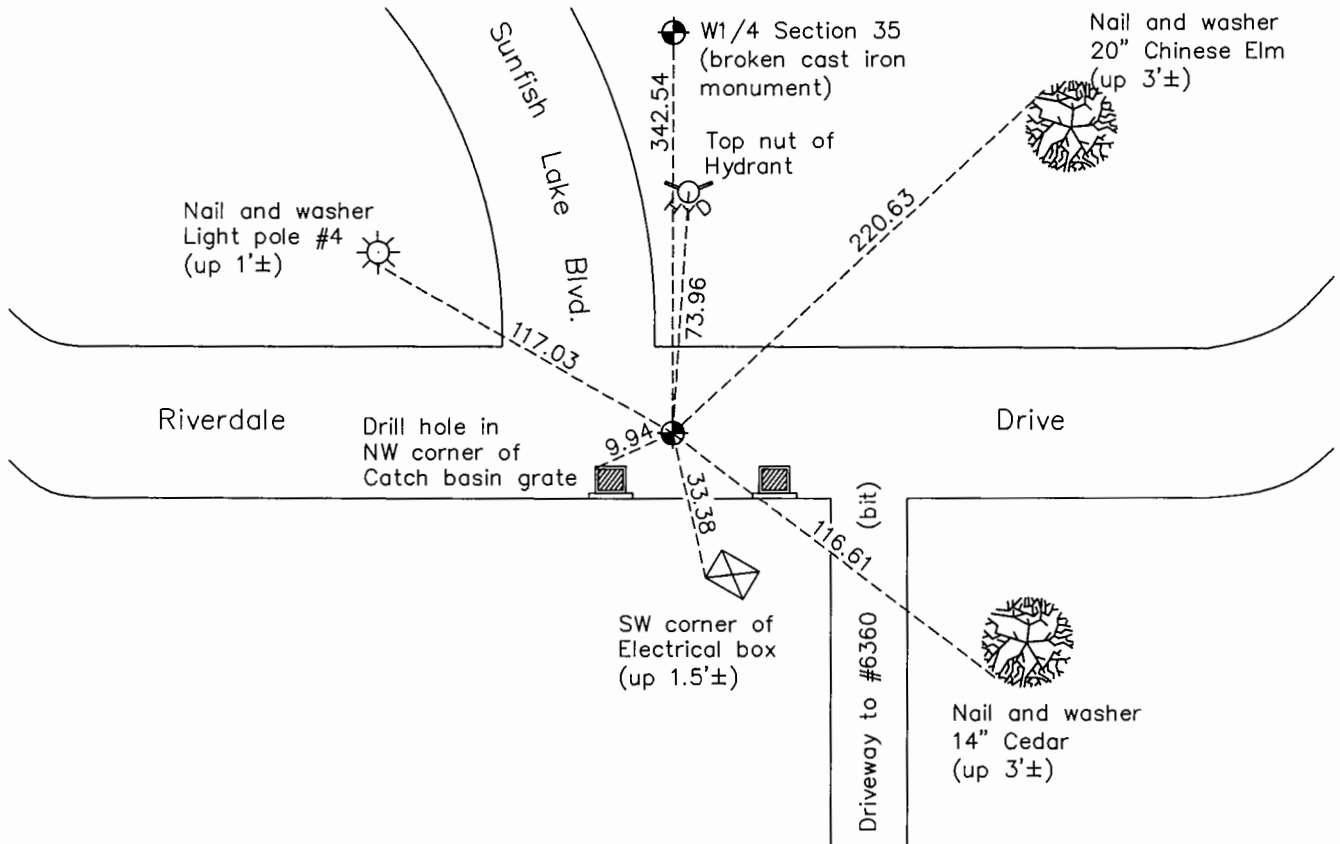
Witness Corner of Sec. 35 Township 32 Range 25
 (On west line of section)

On the 16th day of April, 1962, the described corner was evidenced by a 4" square concrete monument

and to perpetuate the location of said corner, at the exact location thereof, a permanent marker was placed consisting of a cast iron monument

AND on the 20th day of October, 2015, said permanent marker was found and the ties were updated

Updated reference ties are as shown below.



Revision Date
8/18/16

N.A.D. 1983 Coordinates
 (1996 Adjustment)

County Project Coordinates	
Northing	166817.1559
Easting	458084.1360
Date	12/16/99

I hereby certify that this United States public land survey monument record is correct and complete to the best of my knowledge and belief.

Larry D. Hoium Date 8/30/16

Larry D. Hoium, Anoka County Surveyor
 Minnesota License Number 18165

HISTORY OF GOVERNMENT CORNER

Page No. 135

County of Anoka

State of Minnesota

Witness Corner of Sec. 35 Township 32 Range 25
(On west line of section)

CORNER HISTORY:

September 11, 1989 - Set cast iron monument flush with the surface in new location using area resurvey and established ties to monument. Old location of witness corner is inaccessible.

August 10, 1993 - Found cast iron monument and updated ties.

December 16, 1999 - Found cast iron monument and established NAD 1983 (1996 Adjustment) Anoka County Project Coordinates by Static GPS methods. Updated ties.

May 19, 2010 - Found cast iron monument and updated ties.

October 20, 2015 - Found cast iron monument and updated ties.