

# CERTIFICATE OF LOCATION OF GOVERNMENT CORNER

County of Anoka

State of Minnesota

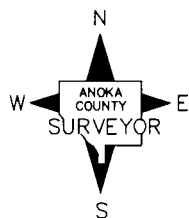
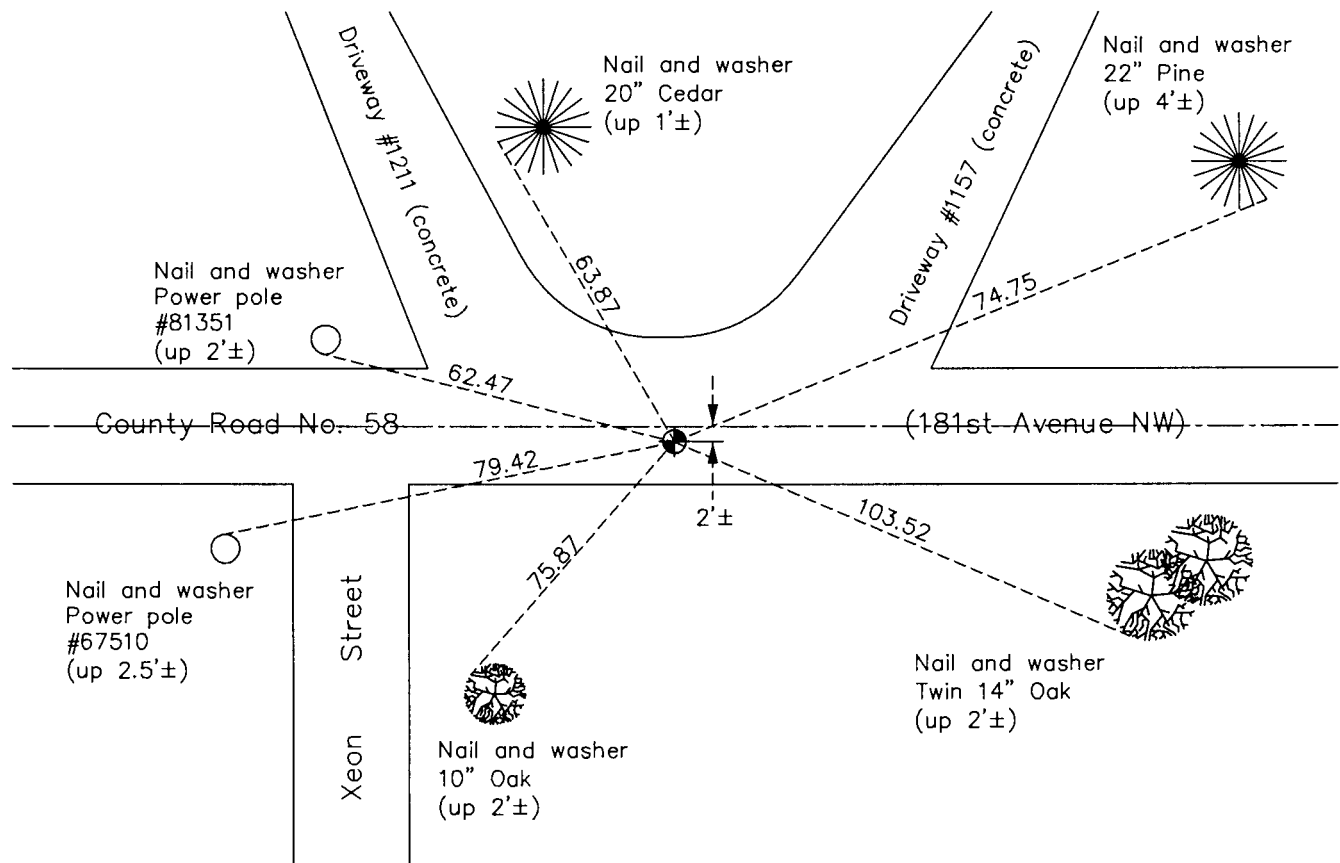
## North $\frac{1}{4}$ Corner of Sec. 2 Township 32 Range 24

On the 19th day of September, 1962, the described corner was evidenced by area resurvey

and to perpetuate the location of said corner, at the exact location thereof, a permanent marker was placed consisting of a cast iron monument

AND on the 12th day of July, 2017, said permanent marker was replaced with a new cast iron monument set flush with the surface after road construction and the ties were updated

Updated reference ties are as shown below.



Revision Date  
12/27/17

N.A.D. 1983 Coordinates  
(1996 Adjustment)

County Project Coordinates	
Northing	195838.7924
Easting	492439.9737
Date	7/25/00

I hereby certify that this United States public land survey monument record is correct and complete to the best of my knowledge and belief.

*Larry D. Hoium* Date 12/27/17

Larry D. Hoium, Anoka County Surveyor

Minnesota License Number 18165

# HISTORY OF GOVERNMENT CORNER

Page No. 3

County of Anoka

State of Minnesota

North 1/4 Corner of Sec. 2 Township 32 Range 24

## **CORNER HISTORY:**

September 19, 1962 - Set cast iron monument using area resurvey and established ties to monument.

August 13, 1964 - Found cast iron monument and updated ties.

July 5, 1968 - Found cast iron monument and updated ties.

June 19, 1972 - Found cast iron monument and updated ties.

May 24, 1976 - Found cast iron monument and updated ties.

May 29, 1979 - Found cast iron monument and updated ties.

June 18, 1982 - Found cast iron monument and updated ties.

August 1, 1988 - Found cast iron monument and updated ties.

July 14, 1993 - Found cast iron monument and updated ties.

July 25, 2000 - Found cast iron monument and established NAD 1983 (1996 Adjustment) Anoka County Project Coordinates by Static GPS methods. Updated ties.

January 18, 2011 - Found cast iron monument and updated ties.

November 19, 2015 - Found cast iron monument flush with the surface and 2' ± south of centerline and updated ties.

May 15, 2017 - Set construction ties and removed cast iron monument prior to road construction. Verified location of corner by VRS GPS methods. Updated ties.

July 12, 2017 - Set cast iron monument flush with the surface after road construction using construction ties. Verified location of corner by Static and VRS GPS methods. Updated ties.