

CERTIFICATE OF LOCATION OF GOVERNMENT CORNER

County of Anoka

State of Minnesota

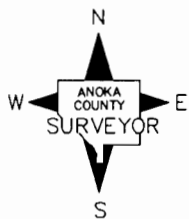
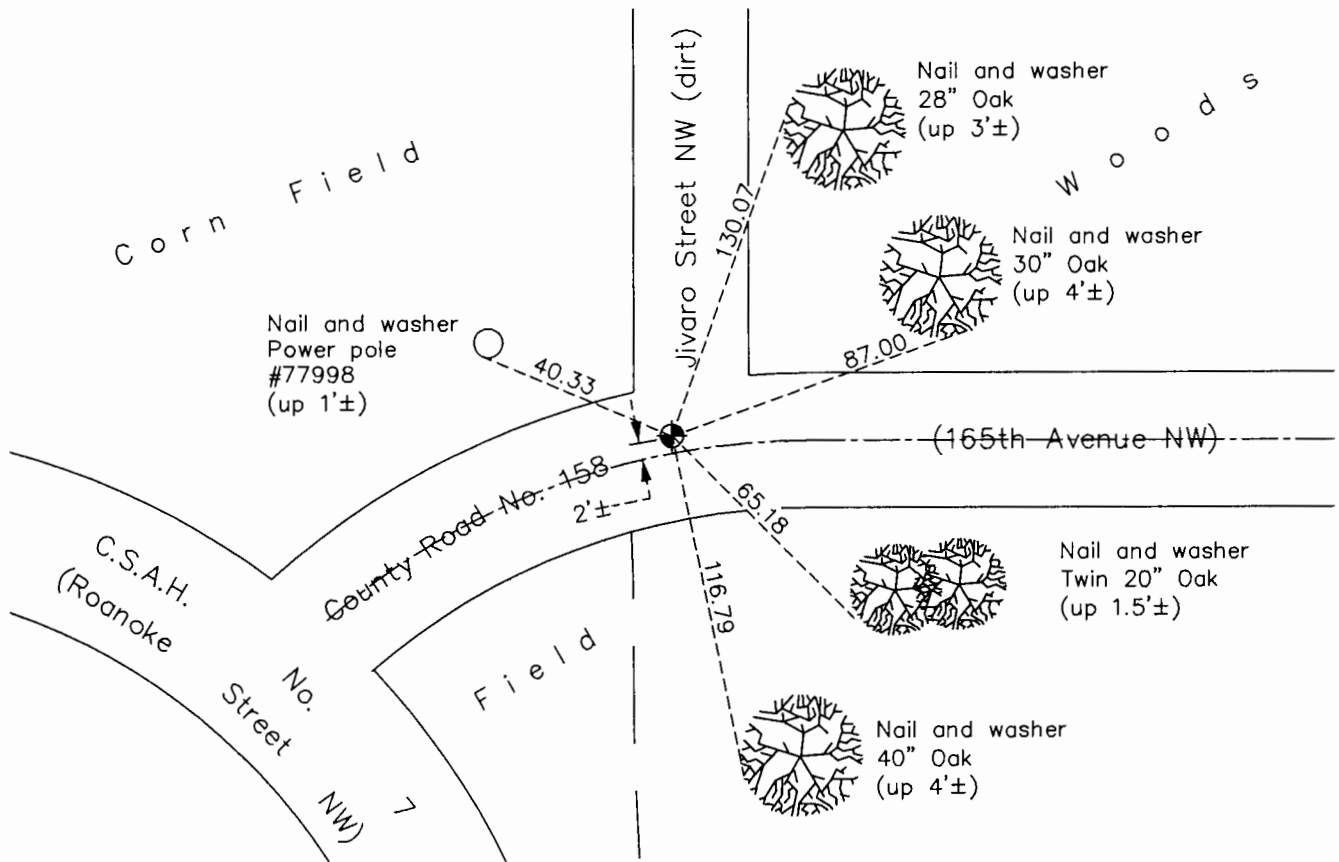
North 1/4 Corner of Sec. 18 Township 32 Range 24

On the 2nd day of November, 1961, the described corner was evidenced by area resurvey

and to perpetuate the location of said corner, at the exact location thereof, a permanent marker was placed consisting of a cast iron monument

AND on the 12th day of July, 2017, said permanent marker was replaced with a new cast iron monument set flush with the surface after road construction and the ties were updated

Updated reference ties are as shown below.



Revision Date

12/27/17

N.A.D. 1983 Coordinates
(1996 Adjustment)

County Project Coordinates	
Northing	185662.8590
Easting	471490.8010
Date	10/04/00

I hereby certify that this United States public land survey monument record is correct and complete to the best of my knowledge and belief.

Larry D. Hoium Date 12/27/17

Larry D. Hoium, Anoka County Surveyor
Minnesota License Number 18165

HISTORY OF GOVERNMENT CORNER

County of Anoka

State of Minnesota

North 1/4 Corner of Sec. 18 Township 32 Range 24

CORNER HISTORY:

November 2, 1961 - Set cast iron monument down 0.4'± and established ties to monument.

August 25, 1964 - Found cast iron monument and updated ties.

July 8, 1968 - Found cast iron monument and updated ties.

June 28, 1972 - Found cast iron monument and updated ties.

June 1, 1976 - Found cast iron monument and updated ties.

October 2, 1978 - Found cast iron monument flush with the surface and updated ties.

June 4, 1979 - Found cast iron monument and updated ties.

June 21, 1982 - Found cast iron monument and updated ties.

May 29, 1985 - Found cast iron monument and updated ties.

April 28, 1987 - Found cast iron monument and updated ties.

July 28, 1988 - Found cast iron monument and updated ties.

July 15, 1993 - Found cast iron monument and updated ties.

October 4, 2000 - Found cast iron monument and established NAD 1983 (1996 Adjustment) Anoka County Project Coordinates by Static GPS methods. Updated ties.

October 27, 2010 - Found cast iron monument down 0.1'± and updated ties.

February 4, 2016 - Found cast iron monument down 0.1'± and updated ties.

May 15, 2017 - Set construction ties and removed cast iron monument prior to road construction. Verified location of corner by VRS GPS methods and updated ties.

July 12, 2017 - Set cast iron monument flush with the surface after road construction using construction ties. Verified location of corner by Static and VRS GPS methods. Updated ties.