

# CERTIFICATE OF LOCATION OF GOVERNMENT CORNER

County of Anoka

State of Minnesota

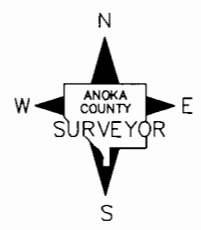
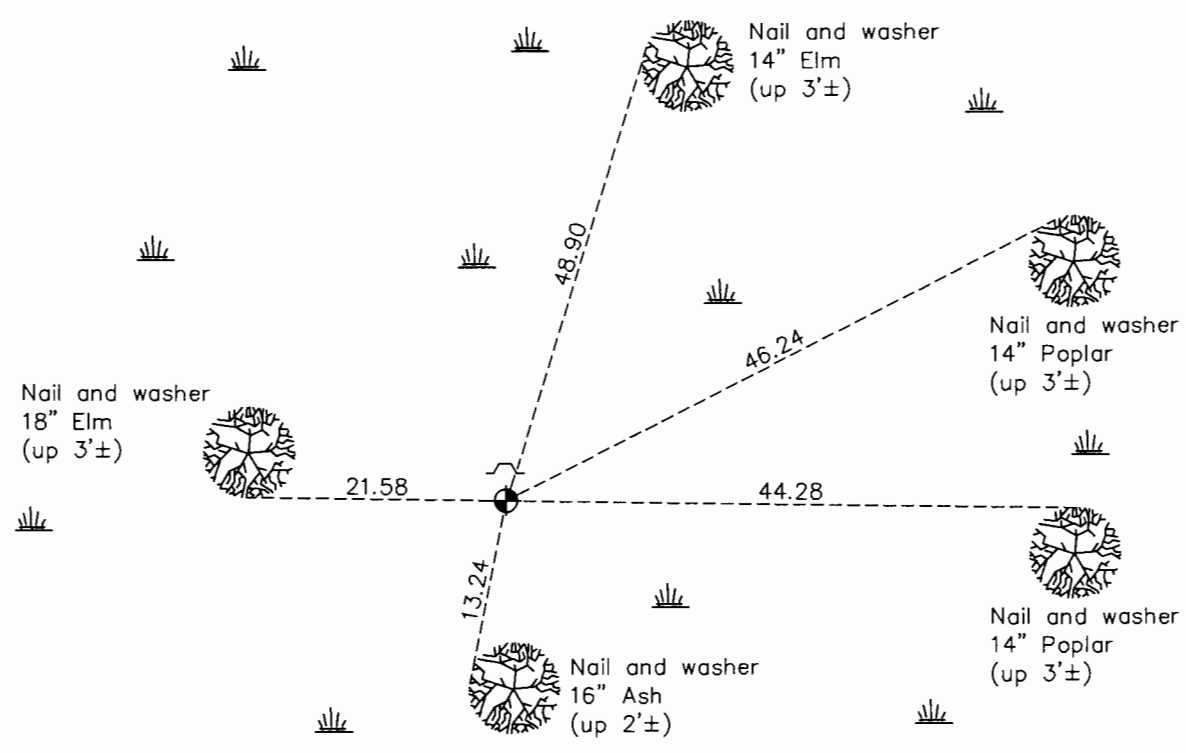
## East 1/4 Corner of Sec. 4 Township 31 Range 23

On the 11th day of March, 1980, the described corner was evidenced by an iron pipe set  
by Carley

and to perpetuate the location of said corner, at the exact location thereof, a permanent marker  
was placed consisting of a 2" square steel Telespar monument with a "County Surveyor" cap  
and a sign and post on the north side

AND on the 14th day of August, 2017, said permanent marker was found and the ties  
were updated

Updated reference ties are as shown below.



Revision Date  
12/06/17

N.A.D. 1983 Coordinates  
 (1996 Adjustment)

County Project Coordinates	
Northing	161697.7044
Easting	516205.2819
Date	11/15/99

I hereby certify that this United States public land survey monument record is correct and complete to the best of my knowledge and belief.

*Larry D. Hoium* Date 12/06/17

Larry D. Hoium, Anoka County Surveyor  
 Minnesota License Number 18165