

CERTIFICATE OF LOCATION OF GOVERNMENT CORNER

County of Anoka

State of Minnesota

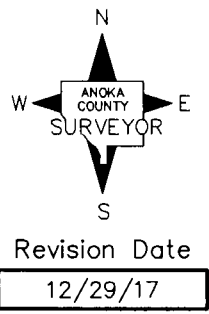
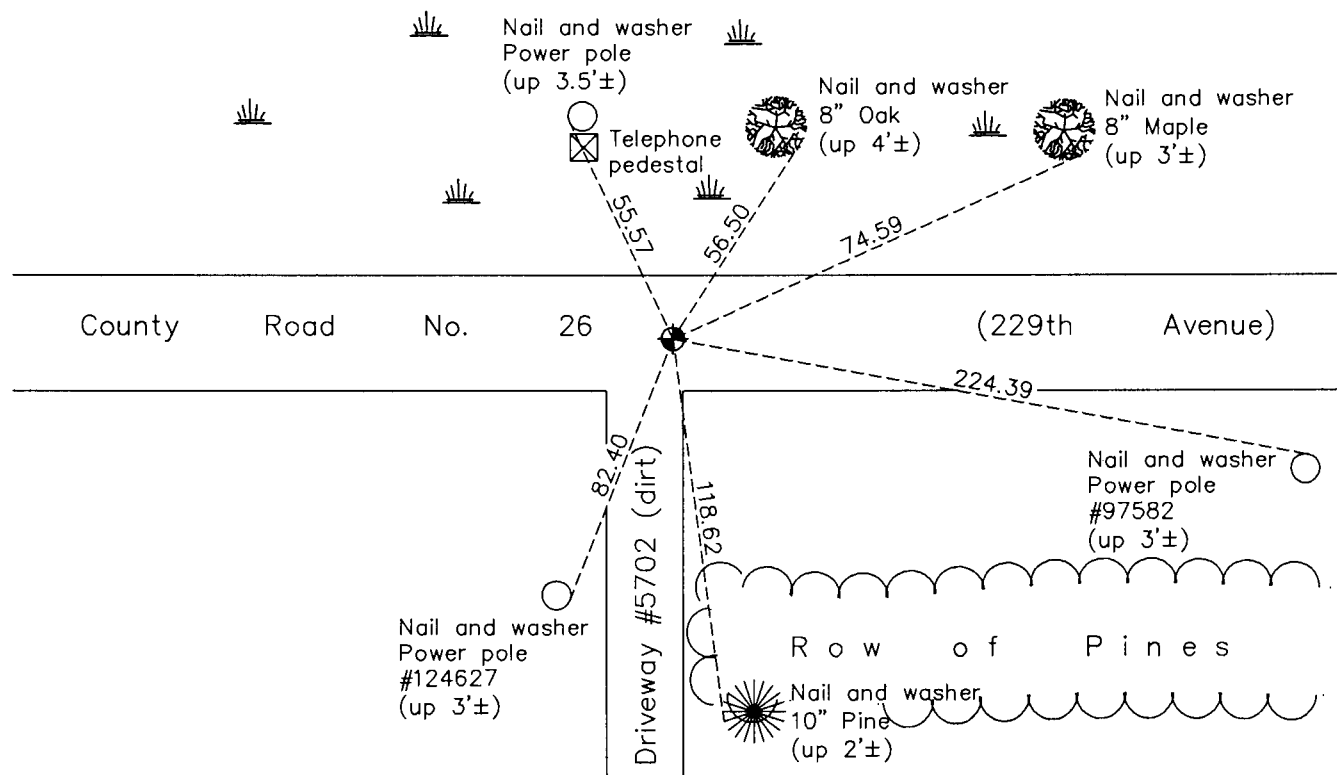
North 1/4 Corner of Sec. 6 Township 33 Range 22

On the 6th day of February, 1963, the described corner was evidenced by a stone located using Highway Department distances

and to perpetuate the location of said corner, at the exact location thereof, a permanent marker was placed consisting of a cast iron monument

AND on the 7th day of July, 2017, said permanent marker was replaced with a new cast iron monument set flush with the surface after road construction and the ties were updated

Updated reference ties are as shown below.



N.A.D. 1983 Coordinates
(1996 Adjustment)

County Project Coordinates	
Northing	<u>227536.7016</u>
Easting	<u>534830.3522</u>
Date	<u>6/04/03</u>

I hereby certify that this United States public land survey monument record is correct and complete to the best of my knowledge and belief.

Larry D. Hoium Date 12/29/17

Larry D. Hoium, Anoka County Surveyor

Minnesota License Number 18165