

CERTIFICATE OF LOCATION OF GOVERNMENT CORNER

County of Anoka

State of Minnesota

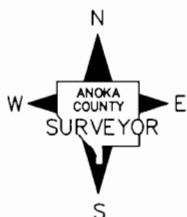
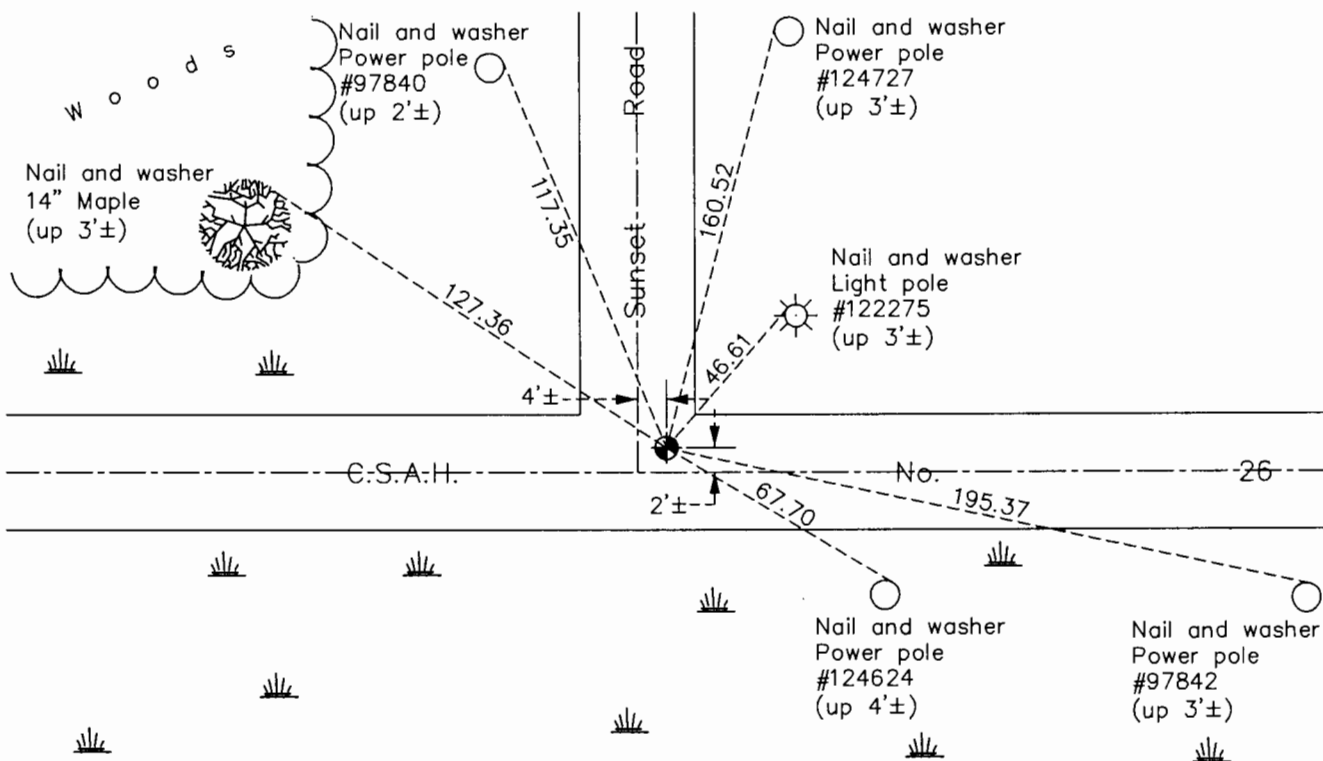
Northeast Corner of Sec. 1 Township 33 Range 23

On the 18th day of April, 1960, the described corner was evidenced by a granite monument

and to perpetuate the location of said corner, at the exact location thereof, a permanent marker was placed consisting of a cast iron monument

AND on the 6th day of July, 2017, said permanent marker was replaced with a new cast iron monument set flush with the surface after road construction and the ties were updated

Updated reference ties are as shown below.



Revision Date
12/28/17

N.A.D. 1983 Coordinates
(1996 Adjustment)

County Project Coordinates	
Northing	227595.8716
Easting	532009.5876
Date	3/25/02

I hereby certify that this United States public land survey monument record is correct and complete to the best of my knowledge and belief.

Larry D. Hoium Date 12/28/17

Larry D. Hoium, Anoka County Surveyor

Minnesota License Number 18165