

CERTIFICATE OF LOCATION OF GOVERNMENT CORNER

County of Anoka

State of Minnesota

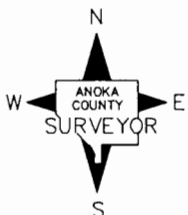
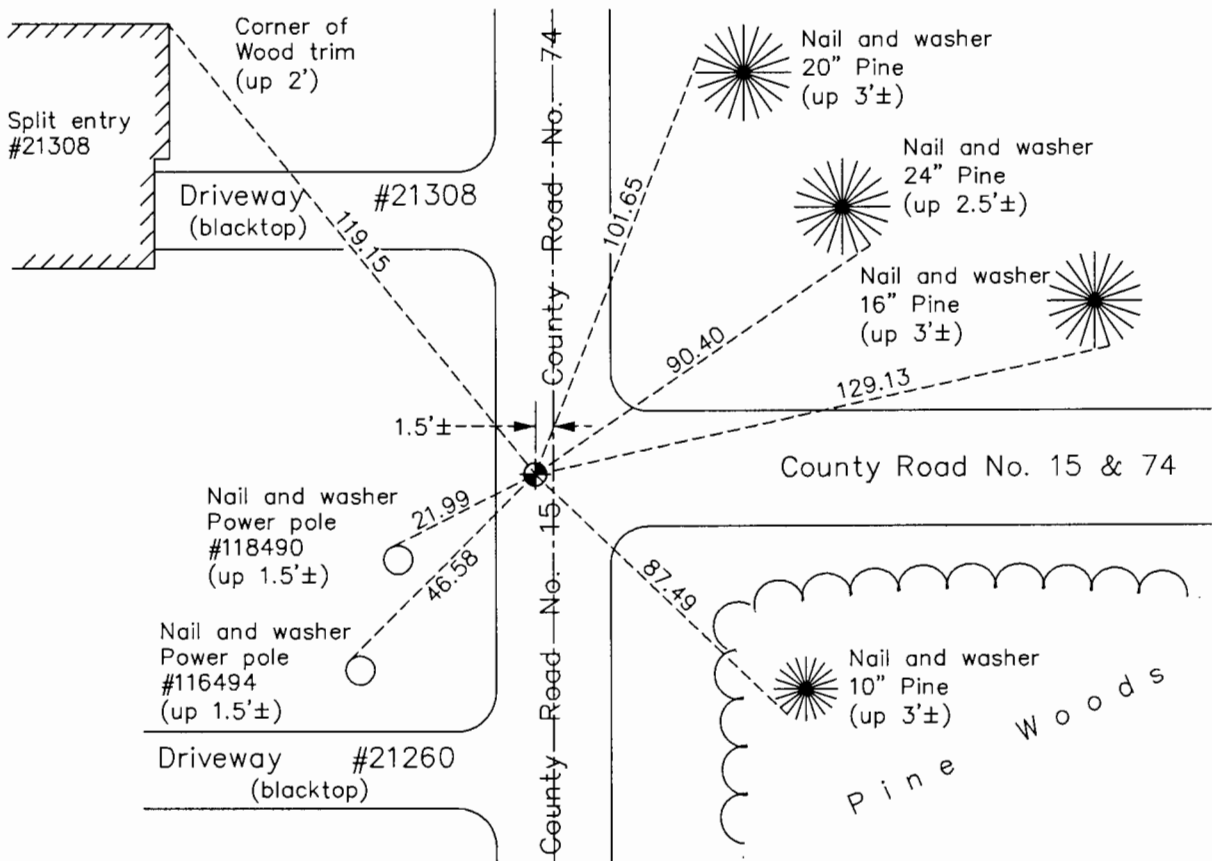
Southeast Corner of Sec. 10 Township 33 Range 23

On the 10th day of August, 1962, the described corner was evidenced by a sandstone monument

and to perpetuate the location of said corner, at the exact location thereof, a permanent marker was placed consisting of a cast iron monument

AND on the 29th day of June, 2017, said permanent marker was replaced with a new cast iron monument after road construction and the ties were updated

Updated reference ties are as shown below.



Revision Date
1/11/18

N.A.D. 1983 Coordinates
(1996 Adjustment)

County Project Coordinates	
Northing	216901.4403
Easting	520939.2266
Date	4/05/02

I hereby certify that this United States public land survey monument record is correct and complete to the best of my knowledge and belief.

Larry D. Hoium Date 1/11/18

Larry D. Hoium, Anoka County Surveyor

Minnesota License Number 18165