

CERTIFICATE OF LOCATION OF GOVERNMENT CORNER

County of Anoka

State of Minnesota

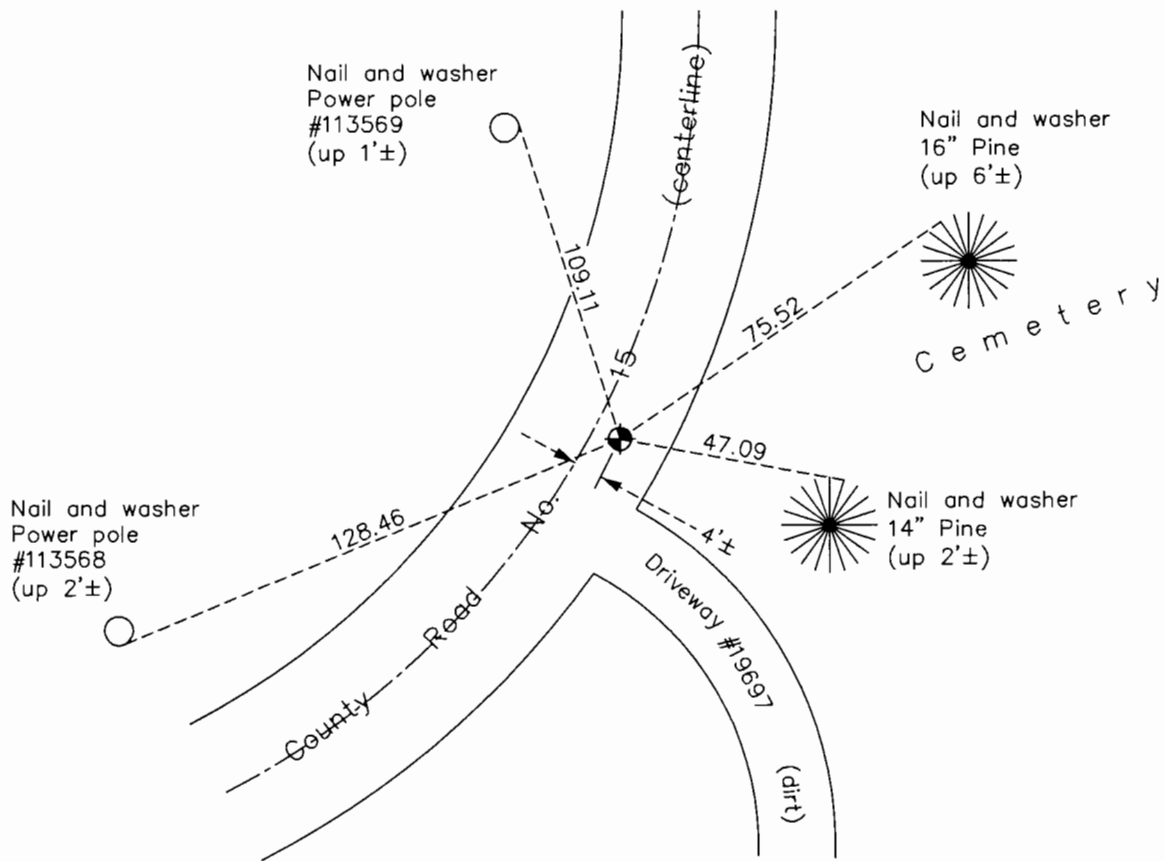
North $\frac{1}{4}$ Corner of Sec. 27 Township 33 Range 23

On the 3rd day of April, 1969, the described corner was evidenced by area resurvey

and to perpetuate the location of said corner, at the exact location thereof, a permanent marker was placed consisting of a cast iron monument

AND on the 26th day of June, 2017, said permanent marker was replaced with a new cast iron monument after road construction and the ties were updated

Updated reference ties are as shown below.



N
W ANOKA COUNTY SURVEYOR E
S

Revision Date
1/11/18

N.A.D. 1983 Coordinates
(1996 Adjustment)

County Project Coordinates	
Northing	206303.0854
Easting	518368.3943
Date	6/11/02

I hereby certify that this United States public land survey monument record is correct and complete to the best of my knowledge and belief.

Larry D. Hoium Date 1/11/18

Larry D. Hoium, Anoka County Surveyor
Minnesota License Number 18165