

CERTIFICATE OF LOCATION OF GOVERNMENT CORNER

County of Anoka

State of Minnesota

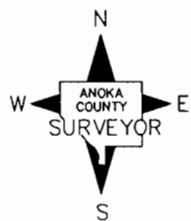
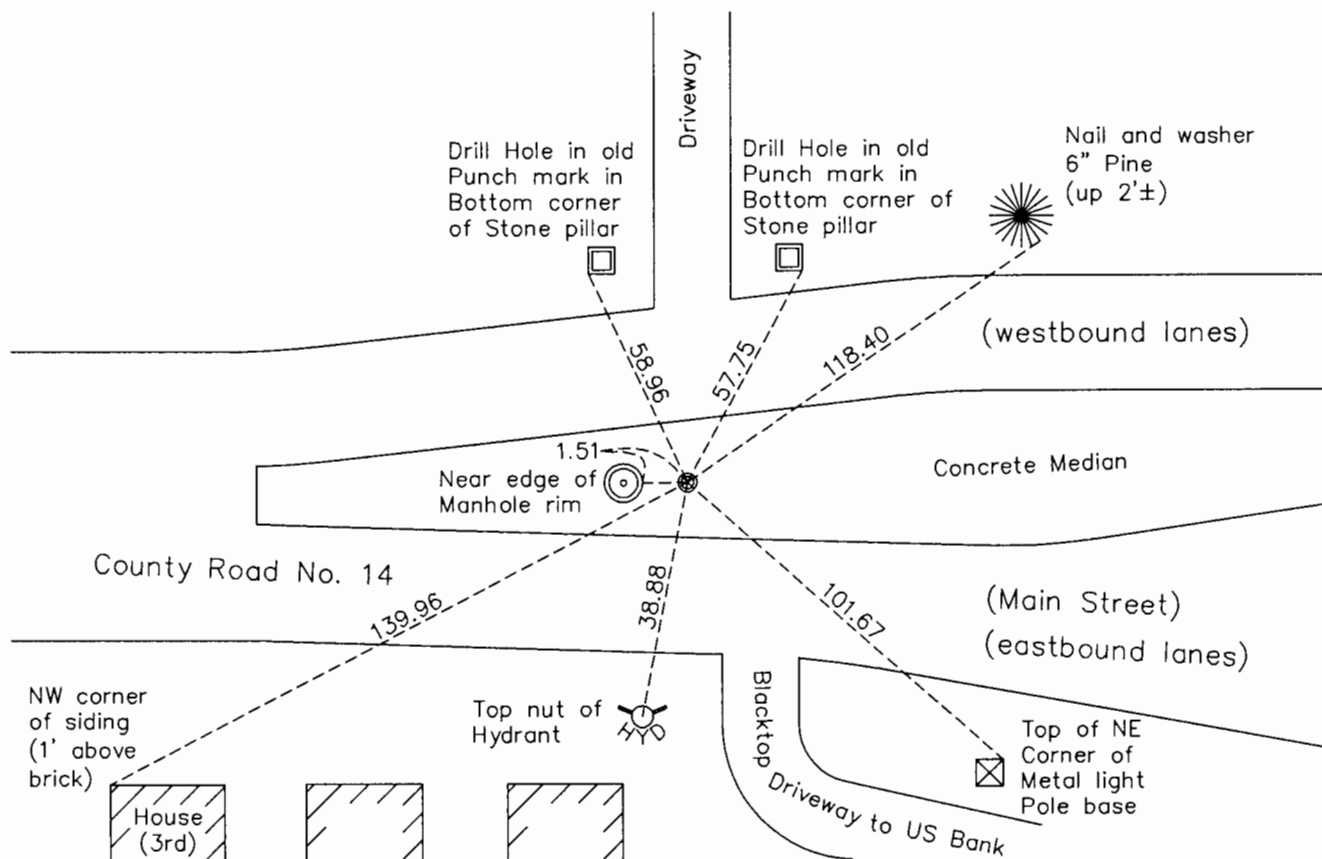
Southwest Corner of Sec. 5 Township 31 Range 24

On the 13th day of October, 1960, the described corner was evidenced by a P.K. nail

and to perpetuate the location of said corner, at the exact location thereof, a permanent marker was placed consisting of a 1/2" iron pipe

AND on the 17th day of November, 2017, said permanent marker was replaced with a cast iron monument set flush with the surface. Ties were updated.

Updated reference ties are as shown below.



Revision Date

12/14/17

N.A.D. 1983 Coordinates
(1996 Adjustment)

County Project Coordinates	
Northing	<u>159164.6548</u>
Easting	<u>473815.1890</u>
Date	<u>9/13/01</u>

I hereby certify that this United States public land survey monument record is correct and complete to the best of my knowledge and belief.

Larry D. Hoium Date 12/14/17

Larry D. Hoium, Anoka County Surveyor
Minnesota License Number 18165

HISTORY OF GOVERNMENT CORNER

Page No. 37

County of Anoka

State of Minnesota

Southwest Corner of Sec. 5 Township 31 Range 24

CORNER HISTORY:

April 10, 1943 - H.A. Cartwright found granite monument down 6" in Main Street. Established ties to monument.

October 13, 1960 - Replaced P.K. nail found with a cast iron monument set flush with the surface. Updated ties.

June 29, 1964 - Found cast iron monument and updated ties.

July 20, 1966 - Found cast iron monument and updated ties.

July 23, 1970 - Found cast iron monument and updated ties. Set P.K. nails 2.00' North and East.

July 19, 1974 - Found cast iron monument and updated ties .

May 4, 1977 - Set new cast iron monument and updated ties.

June 17, 1977 - Found cast iron monument and updated ties .

June 26, 1980 - Found cast iron monument and updated ties .

July 6, 1987 - Set construction ties and removed cast iron monument prior to road construction.

October 21, 1987 - Set cast iron monument flush with surface after road construction using construction ties. Monument is 4'± South of centerline. Updated ties.

September 8, 1989 - Set construction (P.K. nail transit) ties prior to road construction.

September 10, 1990 - Set 1/2" iron pipe in concrete median after road construction using construction ties. Updated ties.

August 27, 1992 - Found 1/2" iron pipe in concrete median and updated ties.

August 9, 1994 - Found 1/2" iron pipe in concrete median and updated ties.

September 13, 2001 - Found 1/2" iron pipe in concrete median and established NAD 1983 (1996 Adjustment) Anoka County Project Coordinates by Static GPS methods. Updated ties.

March 25, 2010 - Found 1/2" iron pipe in concrete median and updated ties.

April 29, 2015 - Found 1/2" iron pipe down 0.15' and updated ties.

November 17, 2017 - Replaced 1/2" iron pipe with a cast iron monument set flush with the surface and updated ties. Verified location of corner by VRS GPS methods.