

# CERTIFICATE OF LOCATION OF GOVERNMENT CORNER

County of Anoka

State of Minnesota

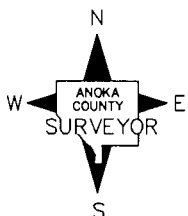
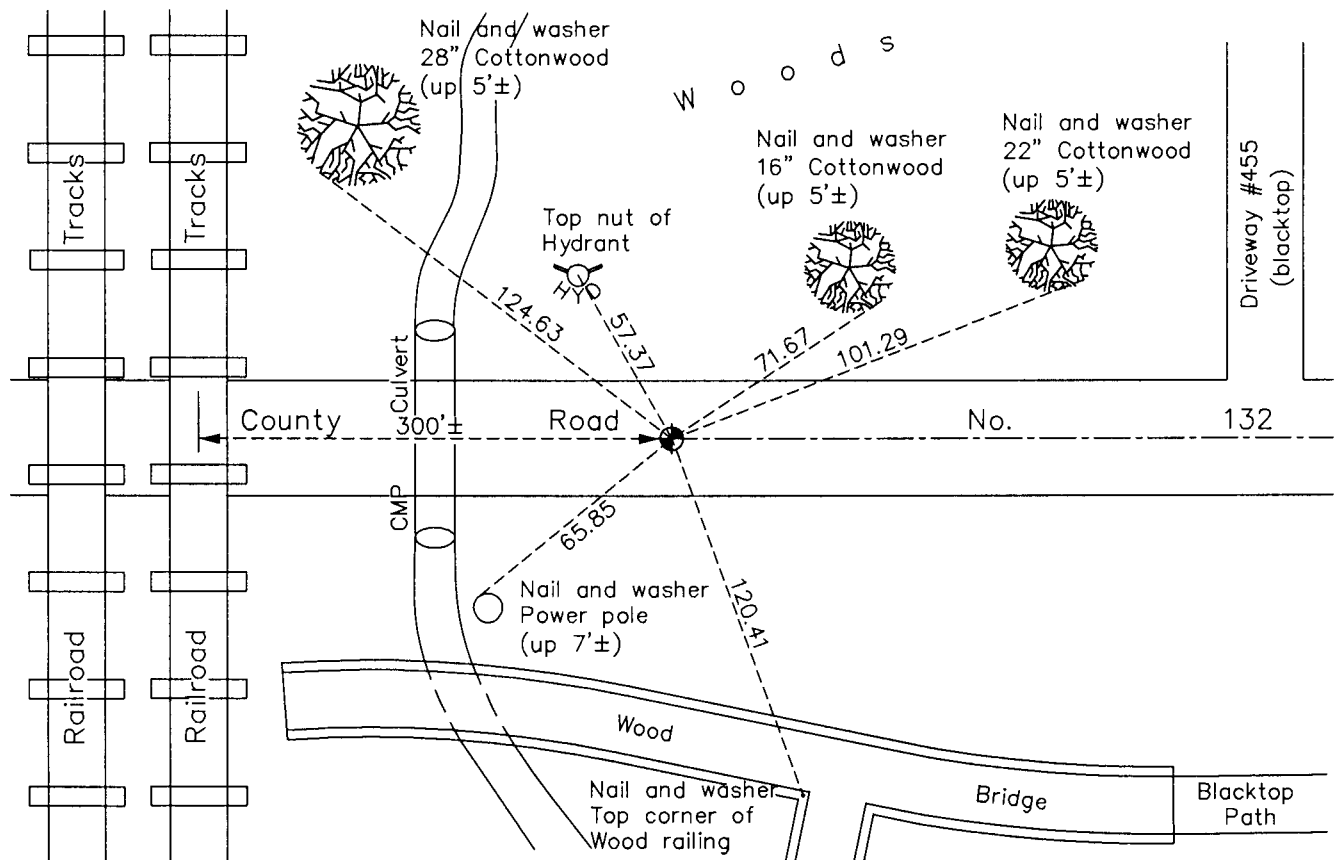
## North $\frac{1}{4}$ Corner of Sec. 3 Township 30 Range 24

On the 12th day of June, 1969, the described corner was evidenced by a  $\frac{3}{4}$ " iron pipe

and to perpetuate the location of said corner, at the exact location thereof, a permanent marker was placed consisting of a cast iron monument

AND on the 18th day of August, 2017, said permanent marker was replaced with a new cast iron monument after road construction and the ties were updated.

Updated reference ties are as shown below.



Revision Date  
11/22/17

N.A.D. 1983 Coordinates  
(1996 Adjustment)

County Project Coordinates	
Northing	<u>132510.2535</u>
Easting	<u>496785.9886</u>
Date	<u>12/15/04</u>

I hereby certify that this United States public land survey monument record is correct and complete to the best of my knowledge and belief.

*Larry D. Hoium* Date 11/22/17

Larry D. Hoium, Anoka County Surveyor

Minnesota License Number 18165