

CERTIFICATE OF LOCATION OF GOVERNMENT CORNER

County of Anoka

State of Minnesota

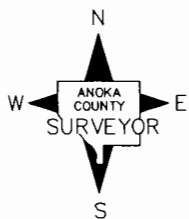
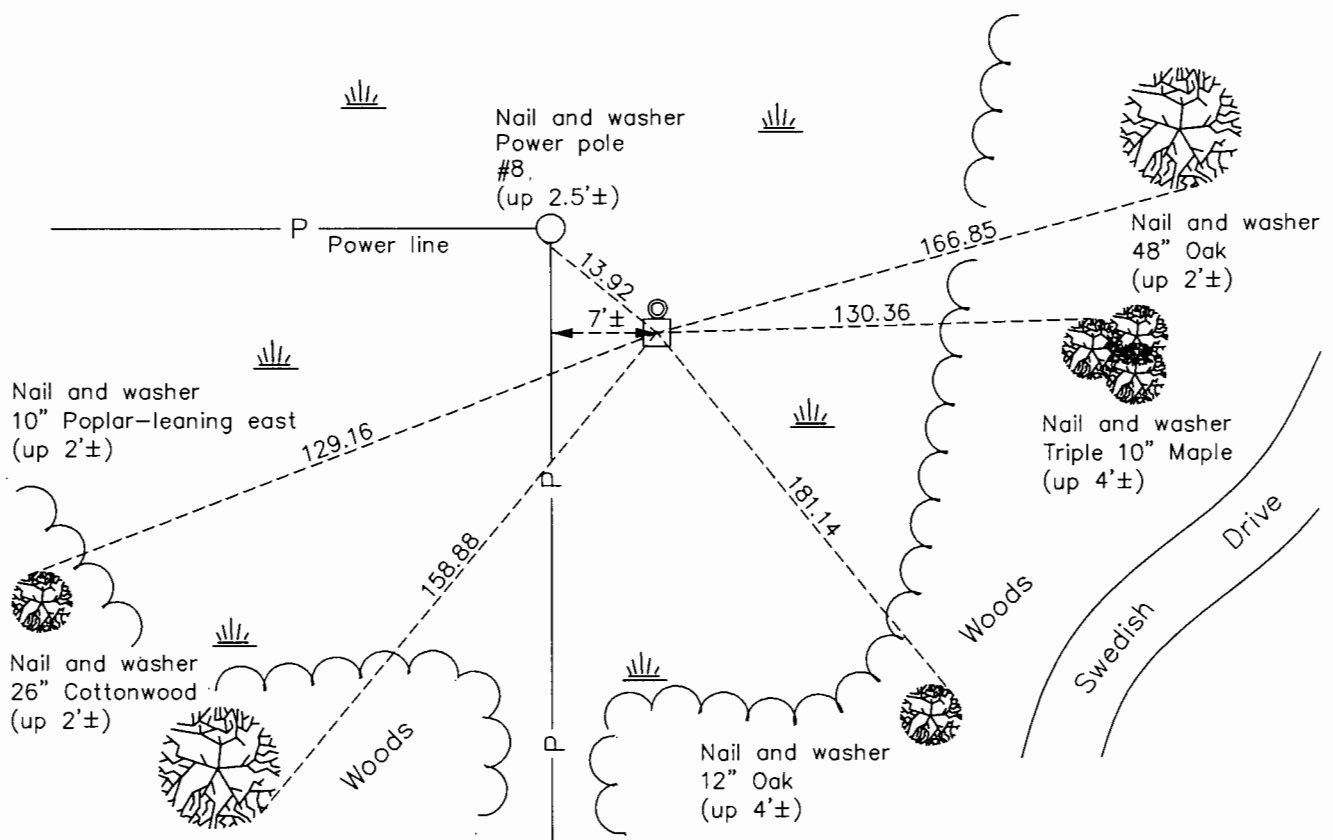
East 1/4 Corner of Sec. 5 Township 32 Range 23

On the 2nd day of February, 1961, the described corner was evidenced by a concrete monument

and to perpetuate the location of said corner, at the exact location thereof, a permanent marker was placed consisting of the same concrete monument with an iron pipe on the north side

AND on the 24th day of August, 2017, said permanent marker was replaced with a 2" sq. steel Telespar mont. up 1'± w/ "County Surveyor" cap. Updated ties & set sign & post north.

Updated reference ties are as shown below.



N.A.D. 1983 Coordinates
(1996 Adjustment)

County Project Coordinates	
Northing	193508.0846
Easting	510887.7589
Date	1/28/02

Revision Date
12/21/17

I hereby certify that this United States public land survey monument record is correct and complete to the best of my knowledge and belief.

Larry D. Hoium Date 12/21/17

Larry D. Hoium, Anoka County Surveyor

Minnesota License Number 18165