

# CERTIFICATE OF LOCATION OF GOVERNMENT CORNER

County of Anoka

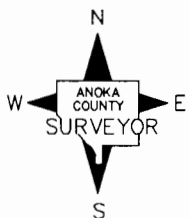
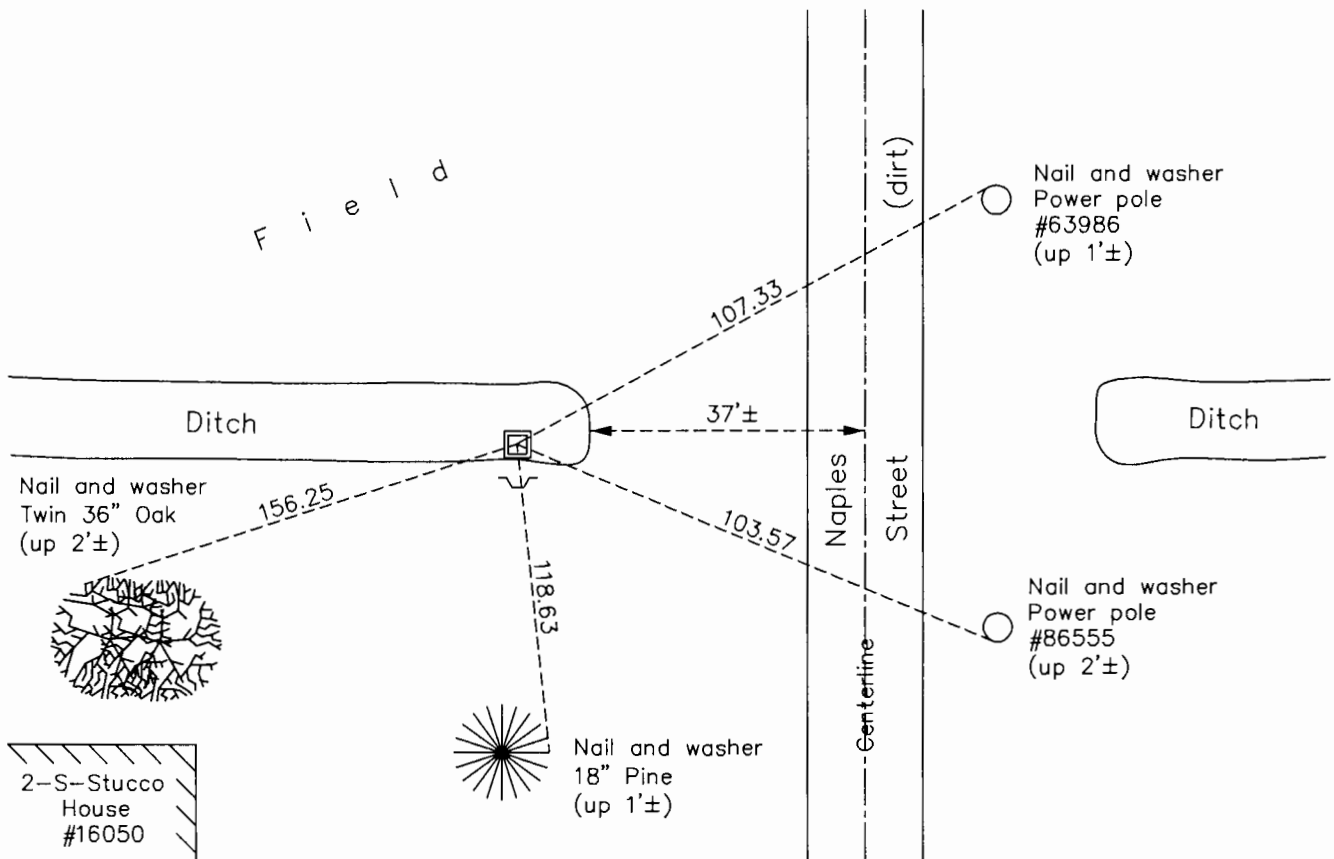
State of Minnesota

## West 1/4 Corner of Sec. 14 Township 32 Range 23

On the 2nd day of November, 1966, the described corner was evidenced by area resurvey

and to perpetuate the location of said corner, at the exact location thereof, a permanent marker was placed consisting of a red and white 2" square steel Telespar monument with a sign  
attached to the south side

AND on the 18th day of September, 2017, said permanent marker was found broken and leaning.  
Replaced w/ 2" sq. steel Telespar mont. up 2.5'± w/ "Co. Surveyor" cap & punchmark. Updated ties.  
 Updated reference ties are as shown below.



Revision Date  
12/21/17

N.A.D. 1983 Coordinates  
 (1996 Adjustment)

County Project Coordinates	
Northing	<u>182649.2151</u>
Easting	<u>521454.8560</u>
Date	<u>9/04/01</u>

I hereby certify that this United States public land survey monument record is correct and complete to the best of my knowledge and belief.

*Larry D. Hoium* Date 12/21/17

\_\_\_\_\_  
 Larry D. Hoium, Anoka County Surveyor  
 Minnesota License Number 18165