

CERTIFICATE OF LOCATION OF GOVERNMENT CORNER

County of Anoka

State of Minnesota

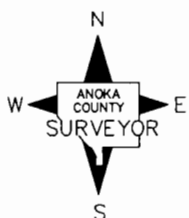
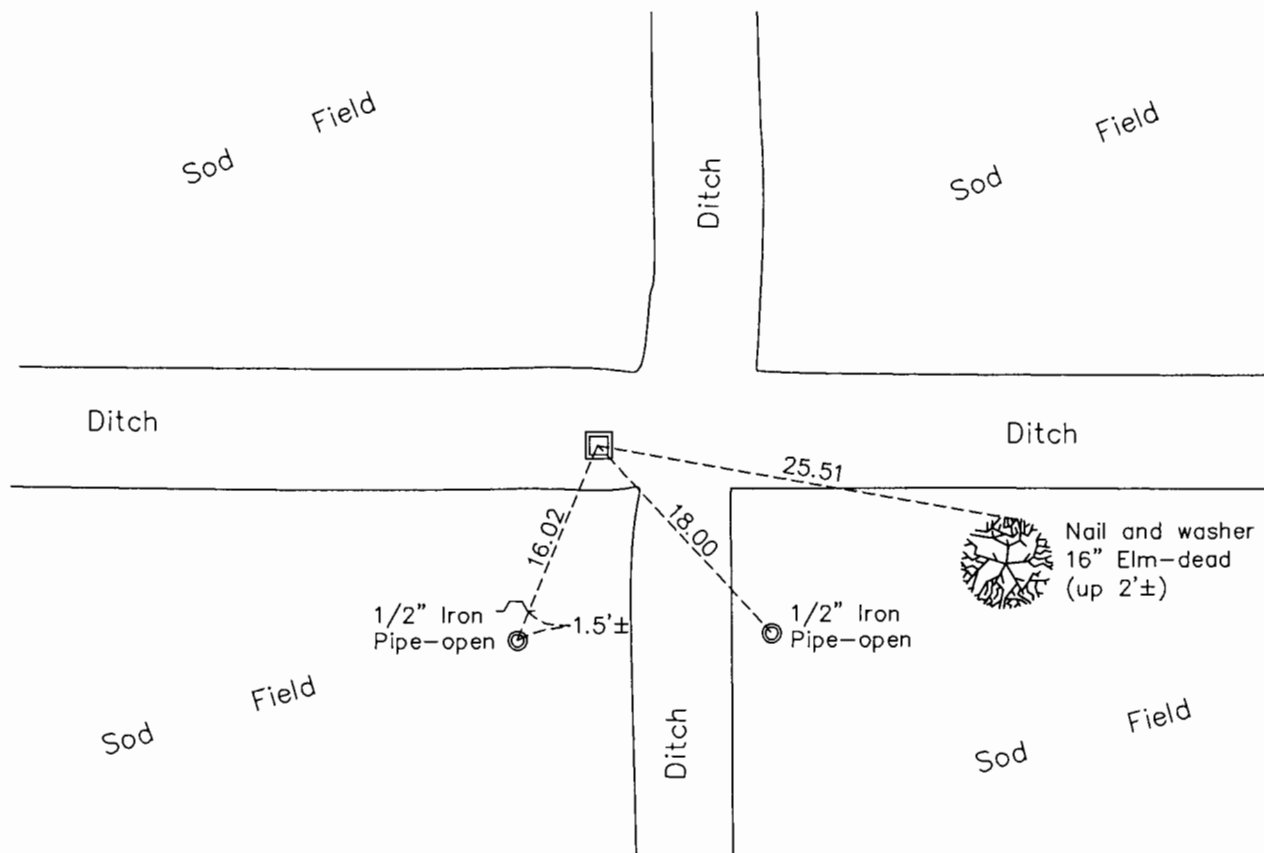
South $\frac{1}{4}$ Corner of Sec. 15 Township 32 Range 23

On the 9th day of November, 1967, the described corner was evidenced by area resurvey

and to perpetuate the location of said corner, at the exact location thereof, a permanent marker was placed consisting of an iron pipe

AND on the 7th day of September, 2017, said permanent marker was found missing. Replaced with 2" sq. steel Telespar mont. up 2'± w/ "County Surveyor" cap and the ties were updated

Updated reference ties are as shown below.



N.A.D. 1983 Coordinates
(1996 Adjustment)

County Project Coordinates	
Northing	<u>180078.1541</u>
Easting	<u>518766.9514</u>
Date	<u>9/10/01</u>

Revision Date

12/21/17

I hereby certify that this United States public land survey monument record is correct and complete to the best of my knowledge and belief.

Larry D. Hoium Date 12/21/17

Larry D. Hoium, Anoka County Surveyor

Minnesota License Number 18165