

CERTIFICATE OF LOCATION OF GOVERNMENT CORNER

County of Anoka

State of Minnesota

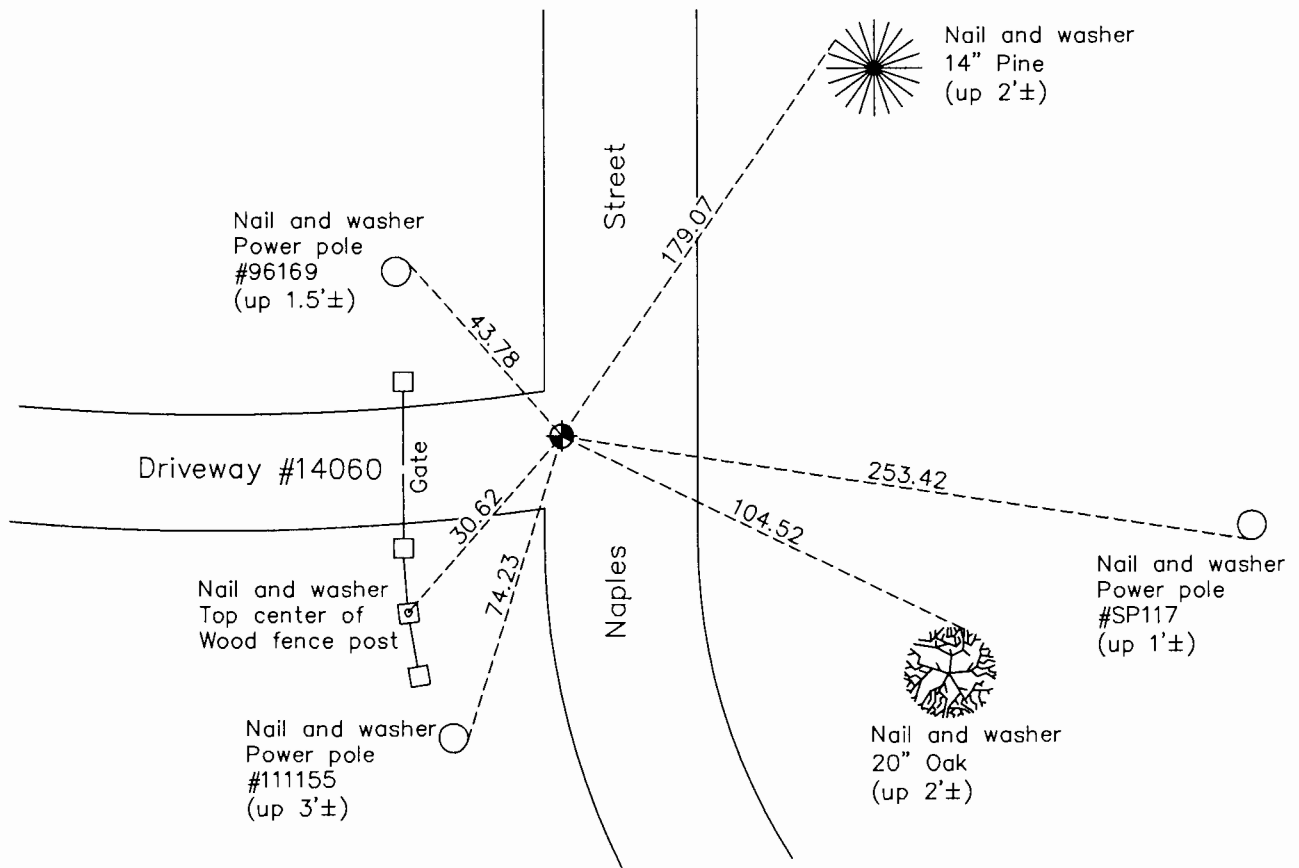
Northwest Corner of Sec. 35 Township 32 Range 23

On the 17th day of July, 1964, the described corner was evidenced by a 6"X6" granite monument

and to perpetuate the location of said corner, at the exact location thereof, a permanent marker was placed consisting of a cast iron monument (0.7' east of face of curb at driveway)

AND on the 20th day of June, 2017, said permanent marker was found broken. Replaced with a short slim cast iron monument set on top of granite monument and updated ties.

Updated reference ties are as shown below.



N.A.D. 1983 Coordinates
(1996 Adjustment)

County Project Coordinates

Northing 169470.6937

Easting 521526.9375

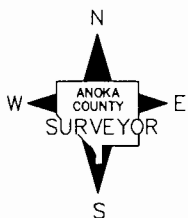
Date 11/30/01

I hereby certify that this United States public land survey monument record is correct and complete to the best of my knowledge and belief.

Larry D. Hoium Date 12/22/17

Larry D. Hoium, Anoka County Surveyor

Minnesota License Number 18165



Revision Date

12/22/17