

CERTIFICATE OF LOCATION OF GOVERNMENT CORNER

County of Anoka

State of Minnesota

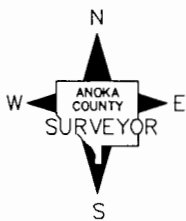
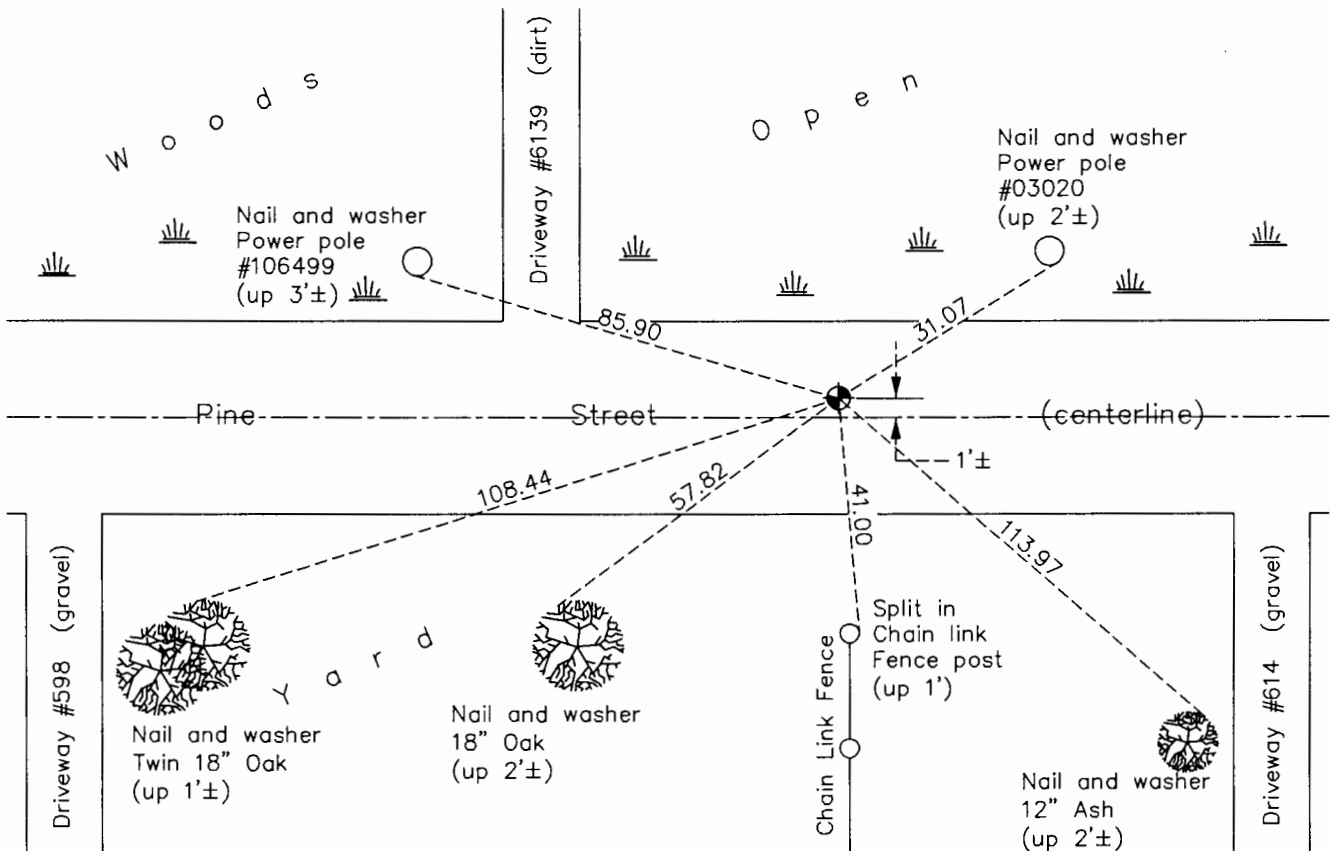
North 1/4 Corner of Sec. 5 Township 31 Range 22

On the 17th day of May, 1963, the described corner was evidenced by a concrete monument

and to perpetuate the location of said corner, at the exact location thereof, a permanent marker was placed consisting of a cast iron monument (down 1'±)

AND on the 7th day of August, 2017, said permanent marker was found with a 1/2" iron pipe on top of CIM. Set a partial CIM flush with the surface on top of existing CIM and updated ties.

Updated reference ties are as shown below.



N.A.D. 1983 Coordinates
(1996 Adjustment)

County Project Coordinates	
Northing	<u>164102.2607</u>
Easting	<u>540028.6503</u>
Date	<u>5/02/98</u>

Revision Date

12/04/17

I hereby certify that this United States public land survey monument record is correct and complete to the best of my knowledge and belief.

Larry D. Hoium Date 12/04/17

Larry D. Hoium, Anoka County Surveyor

Minnesota License Number 18165

HISTORY OF GOVERNMENT CORNER

Page No. 11

County of Anoka

State of Minnesota

North 1/4 Corner of Sec. 5 Township 31 Range 22

CORNER HISTORY:

September 6, 1943 - Cartwright found concrete monument and established ties to monument.

March 14, 1962 - Found all ties missing.

May 17, 1963 - Found 4" square concrete monument down 0.2'±. Set 3/4" iron pipe on north side of monument and updated ties.

June 18, 1965 - Found concrete monument down 0.5'± and updated ties.

August 12, 1969 - Found concrete monument down 0.2'± and updated ties.

June 14, 1973 - Replaced concrete monument with a cast iron monument set down 0.5'±. Updated ties.

August 17, 1976 - Found cast iron monument and updated ties.

April 18, 1979 - Replaced broken cast iron monument with a new cast iron monument and updated ties.

July 14, 1986 - Found cast iron monument and updated ties.

August 30, 1991 - Found cast iron monument and updated ties.

June 19, 1996 - Found cast iron monument down 1'± and updated ties.

May 2, 1998 - Found cast iron monument and established NAD 1983 (1996 Adjustment) Anoka County Project Coordinates by Static GPS methods. Updated ties.

July 26, 2010 - Found cast iron monument with a 1" iron pipe on top of the cast iron monument and updated ties.

September 13, 2016 - Found cast iron monument with a 1/2" iron pipe on top of the cast iron monument and updated ties.

August 7, 2017 - Found cast iron monument and set a partial cast iron monument flush with the surface on top of the existing cast iron monument. Verified location of corner by VRS GPS methods and updated ties.