

# CERTIFICATE OF LOCATION OF GOVERNMENT CORNER

County of Anoka

State of Minnesota

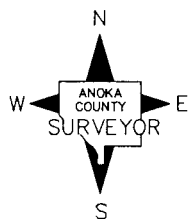
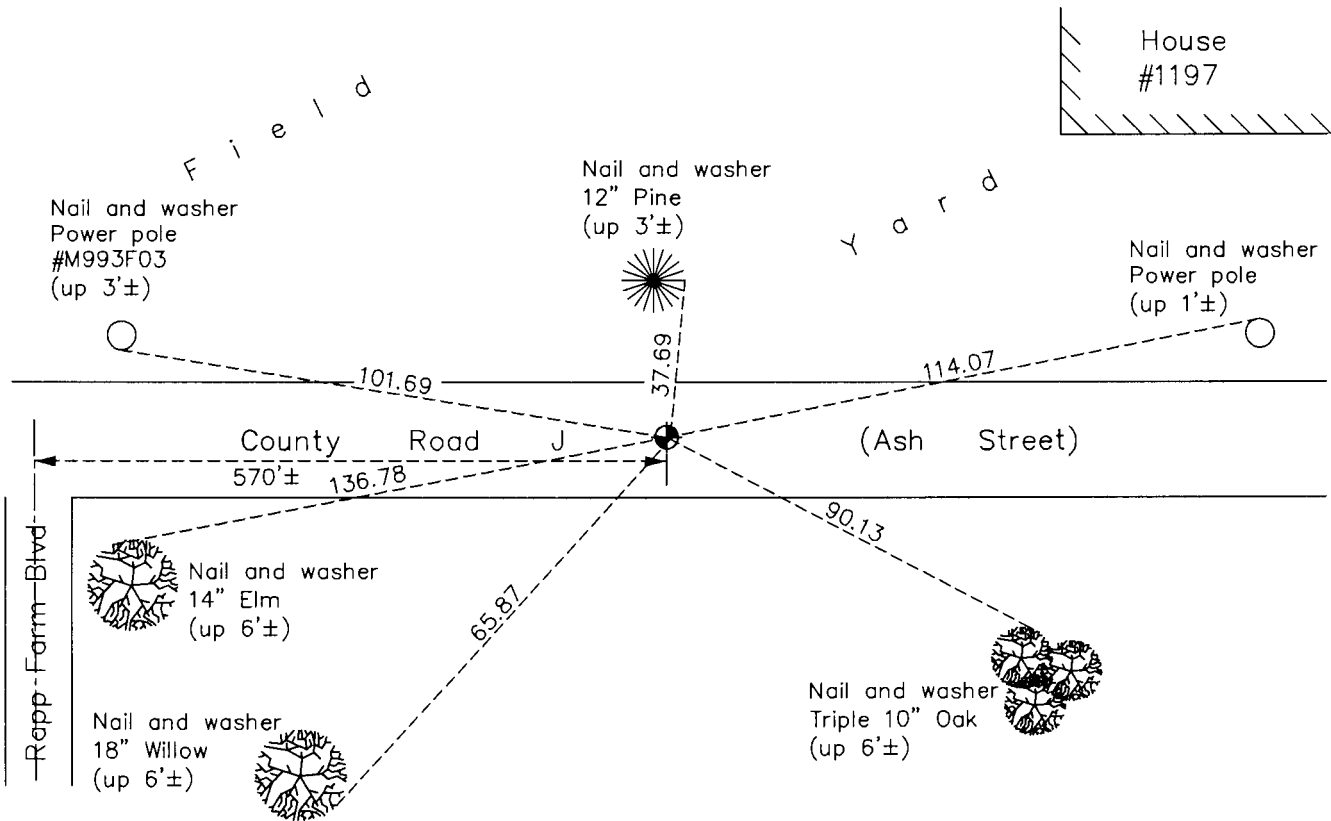
## Southeast Corner of Sec. 33 Township 31 Range 22

On the 19th day of January, 1966, the described corner was evidenced by area resurvey

and to perpetuate the location of said corner, at the exact location thereof, a permanent marker was placed consisting of a cast iron monument

AND on the 9th day of August, 2017, said permanent marker was replaced with a cast iron monument after road construction and the ties were updated

Updated reference ties are as shown below.



Revision Date

12/01/17

N.A.D. 1983 Coordinates  
(1996 Adjustment)

County Project Coordinates	
Northing	<u>132425.6216</u>
Easting	<u>547848.2184</u>
Date	<u>3/23/98</u>

I hereby certify that this United States public land survey monument record is correct and complete to the best of my knowledge and belief.

*Larry D. Hoium* Date 12/01/17

Larry D. Hoium, Anoka County Surveyor

Minnesota License Number 18165

# HISTORY OF GOVERNMENT CORNER

Page No. 145

County of Anoka

State of Minnesota

## Southeast Corner of Sec. 33 Township 31 Range 22

### **CORNER HISTORY:**

January 19, 1966 - Set P.K. nail at corner location using area resurvey. Also set P.K. nails 2.00' north and east of corner location. Established ties.

August 29, 1969 - Replaced P.K. nail with a Cast Iron Monument set flush with the surface and updated ties.

June 27, 1973 - Found Cast Iron Monument and updated ties.

June 8, 1977 - Found Cast Iron Monument and updated ties.

August 4, 1980 - Found Cast Iron Monument and updated ties.

October 31, 1991 - Found Cast Iron Monument and updated ties after road construction.

June 25, 1996 - Found Cast Iron Monument and updated ties.

March 23, 1998 - Found Cast Iron Monument and established NAD 1983 (1996 Adjustment) Anoka County Project Coordinates by Static GPS methods. Updated ties.

August 17, 2010 - Found Cast Iron Monument down 0.2'± and updated ties.

January 24, 2017 - Found Cast Iron Monument down 0.2'± and verified location of corner by VRS GPS methods. Updated ties.

June 12, 2017 - Set construction ties and removed cast iron monument prior to road construction.

August 9, 2017 - Set cast iron monument after road construction using construction ties. Verified location of corner by Static and VRS GPS methods. Updated ties.