

CERTIFICATE OF LOCATION OF GOVERNMENT CORNER

County of Anoka

State of Minnesota

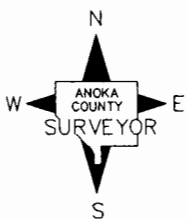
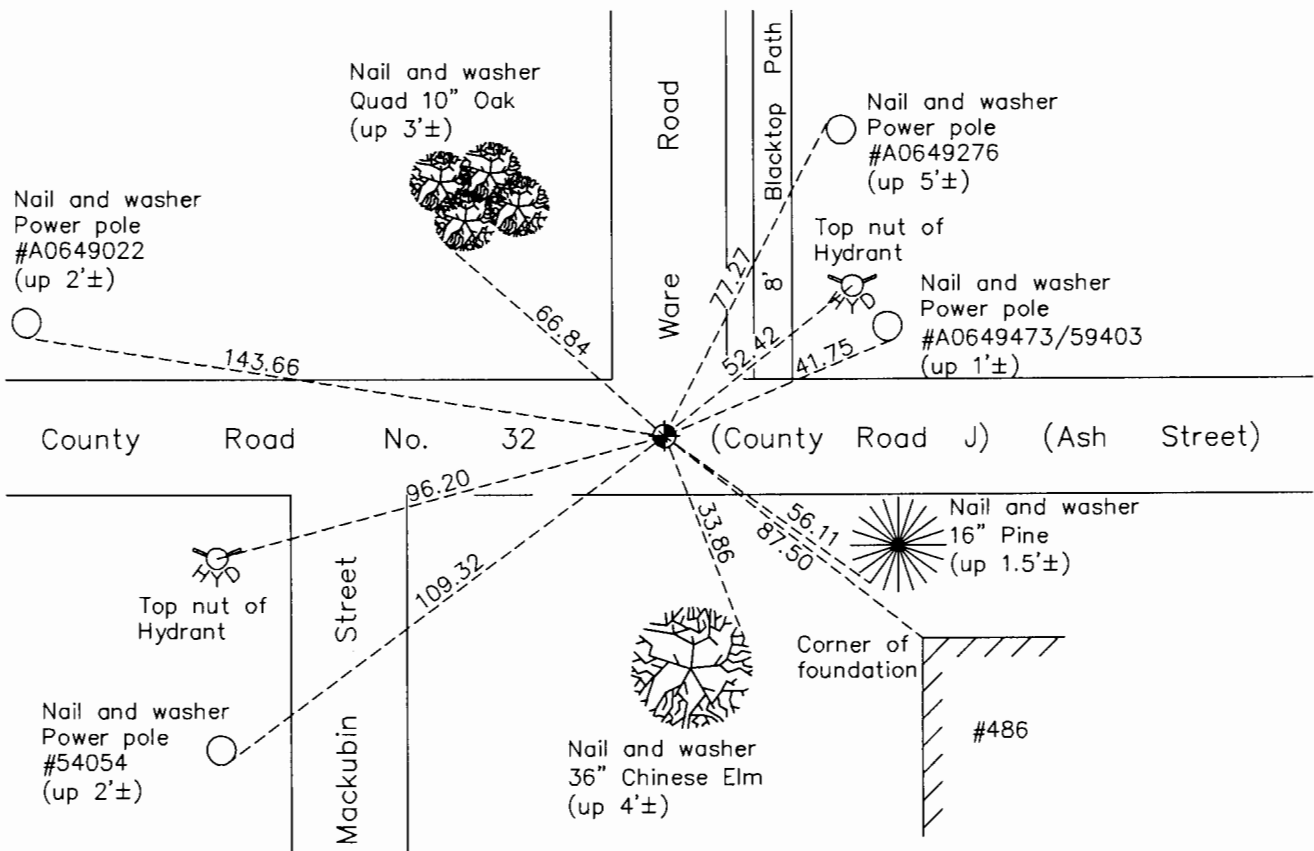
Southeast Corner of Sec. 31 Township 31 Range 22

On the 9th day of April, 1962, the described corner was evidenced by a 4" square concrete monument

and to perpetuate the location of said corner, at the exact location thereof, a permanent marker was placed consisting of a cast iron monument on top of broken off 4" square concrete monument

AND on the 15th day of August, 2017, said permanent marker was found flush with the surface and the ties were updated

Updated reference ties are as shown below.



Revision Date
12/05/17

N.A.D. 1983 Coordinates
(1996 Adjustment)

County Project Coordinates	
Northing	132427.2296
Easting	537324.0583
Date	3/16/98

I hereby certify that this United States public land survey monument record is correct and complete to the best of my knowledge and belief.

Larry D. Hoium Date 12/05/17

Larry D. Hoium, Anoka County Surveyor

Minnesota License Number 18165

HISTORY OF GOVERNMENT CORNER

Page No. 149

County of Anoka

State of Minnesota

Southeast Corner of Sec. 31 Township 31 Range 22

CORNER HISTORY:

October 28, 1944 - Cartwright found Concrete Monument down 0.6'±. Established ties to monument.

June 4, 1959 - N.S.P. Found 4" Square Stone Monument down 1.0'± and updated ties.

April 9, 1962 - Found 4" Square Concrete Monument with top broken off down 0.7'±. Set 3/4" Iron Pipe on north side flush with monument. Updated ties.

June 16, 1965 - Found Concrete Monument and updated ties.

June 26, 1973 - Set Cast Iron Monument flush with the surface on top of 4" Square Concrete Monument. Updated ties.

August 20, 1976 - Found Cast Iron Monument and updated ties.

August 4, 1980 - Found Cast Iron Monument and updated ties.

July 8, 1986 - Found Cast Iron Monument and updated ties.

April 18, 1990 - Found Cast Iron Monument and updated ties prior to road construction.

May 30, 1990 - Removed Cast Iron Monument prior to road construction.

August 17, 1990 - Reset Cast Iron Monument after road construction and updated ties.

October 24, 1991 - Found Cast Iron Monument and updated ties.

March 16, 1998 - Found Cast Iron Monument and established NAD 1983 (1996 Adjustment) Anoka County Project Coordinates by Static GPS methods. Updated ties.

July 15, 2010 - Found Cast Iron Monument down 0.2'± and updated ties.

January 9, 2017 - Found Cast Iron Monument down 0.2'± and verified position by VRS GPS methods. Updated ties.

June 9, 2017 - Set construction ties and removed cast iron monument prior to road construction.

July 6, 2017 - Set cast iron monument flush with the surface after road construction using construction ties. Verified location of corner by Static and VRS GPS methods. Updated ties.

August 15, 2017 - Found Cast Iron Monument flush with the surface. Verified location of corner by VRS GPS methods and updated ties.