

CERTIFICATE OF LOCATION OF GOVERNMENT CORNER

County of Anoka

State of Minnesota

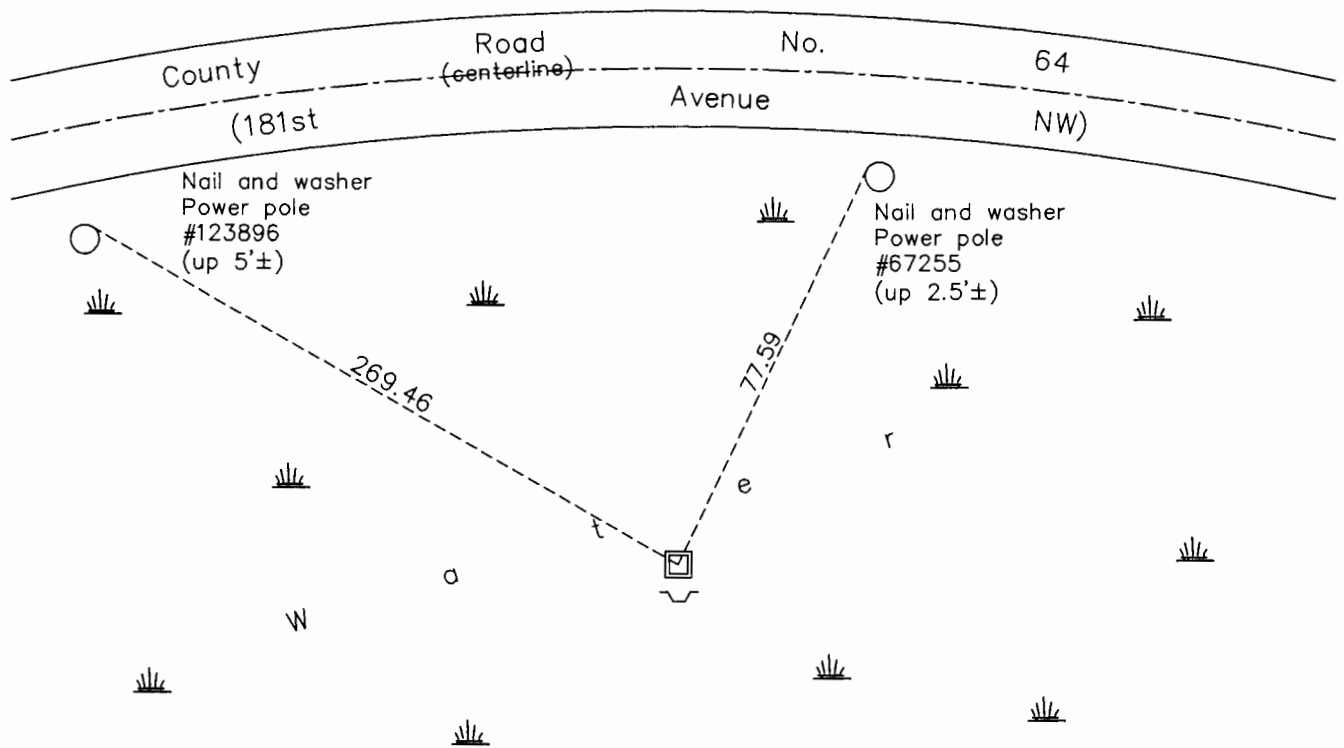
North $\frac{1}{4}$ Corner of Sec. 4 Township 32 Range 25

On the 20th day of November, 1970, the described corner was evidenced by a small iron pipe

and to perpetuate the location of said corner, at the exact location thereof, a permanent marker was placed consisting of a 2" square steel Telespar monument up 2.5'± with a "County Surveyor" cap and punch mark placed over found red and white iron pipe. Sign and post on the south side.

AND on the 16th day of February, 2016, said permanent marker was found and the ties were updated

Updated reference ties are as shown below.



N

W ANOKA COUNTY SURVEYOR E

S

Revision Date

12/27/17

N.A.D. 1983 Coordinates
(1996 Adjustment)

County Project Coordinates	
Northing	196330.1071
Easting	450333.1280
Date	12/30/99

I hereby certify that this United States public land survey monument record is correct and complete to the best of my knowledge and belief.

Larry D. Hoium Date 12/27/17

Larry D. Hoium, Anoka County Surveyor

Minnesota License Number 18165

HISTORY OF GOVERNMENT CORNER

Page No. 9

County of Anoka

State of Minnesota

North 1/4 Corner of Sec. 4 Township 32 Range 25

CORNER HISTORY:

November 20, 1970 - Found small iron pipe when performing area resurvey. Replaced iron pipe with a red and white iron pipe and established ties to iron pipe.

June 21, 1976 - Found red and white iron pipe and updated ties.

June 18, 1979 - Found red and white iron pipe up 3'± and updated ties.

August 13, 1982 - Found red and white iron pipe and updated ties.

July 22, 1985 - Found red and white iron pipe and updated ties.

July 5, 1988 - Found red and white iron pipe and updated ties.

August 4, 1993 - Found red and white iron pipe and updated ties.

December 30, 1999 - Found red and white iron pipe and established NAD 1983 (1996 Adjustment) Anoka County Project Coordinates by Static GPS methods. Updated ties.

February 17, 2011 - Found 1.5" red and white iron pipe rusted off at water line. Set red and white 2" square steel Telespar monument over iron pipe and set up 2.5'± with a 'County Surveyor' cap and punchmark. A sign and post was set up 7'± on south side of monument and updated ties. Verified location of corner by VRS GPS methods.

February 16, 2016 - Found 2" square steel Telespar monument with sign and post on south side and updated ties. Verified location of corner by VRS GPS methods.