

# CERTIFICATE OF LOCATION OF GOVERNMENT CORNER

County of Anoka

State of Minnesota

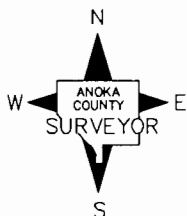
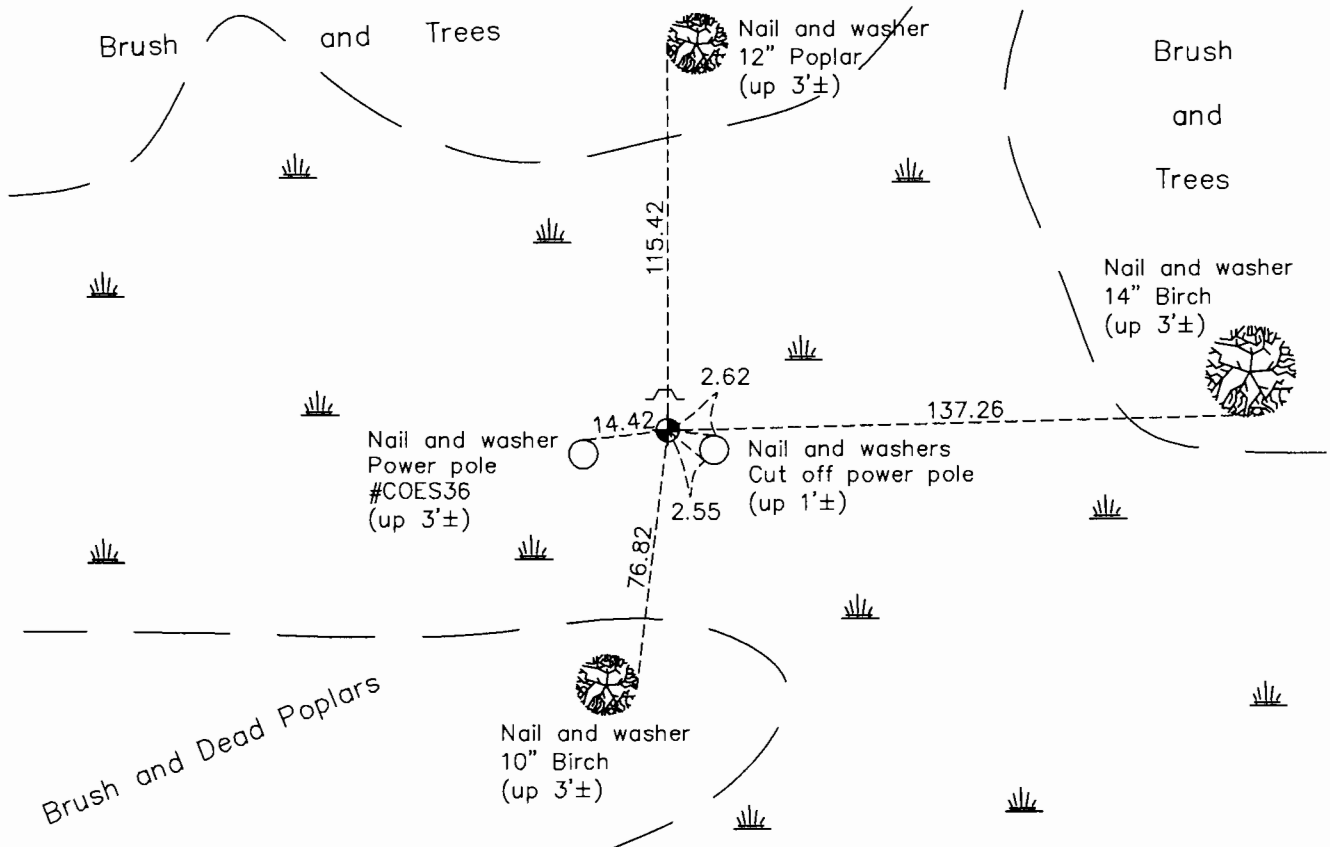
## West 1/4 Corner of Sec. 6 Township 32 Range 25

On the 18th day of December, 1969, the described corner was evidenced by area resurvey

and to perpetuate the location of said corner, at the exact location thereof, a permanent marker was placed consisting of a cast iron monument with a sign and post on the north side

AND on the 16th day of February, 2016, said permanent marker was found up 0.2' with a 6' post on the north side. Added sign to post and updated ties.

Updated reference ties are as shown below.



Revision Date

12/27/17

N.A.D. 1983 Coordinates  
(1996 Adjustment)

County Project Coordinates	
Northing	193744.6028
Easting	437040.2619
Date	1/27/00

I hereby certify that this United States public land survey monument record is correct and complete to the best of my knowledge and belief.

*Larry D. Hoium* Date 12/27/17

Larry D. Hoium, Anoka County Surveyor

Minnesota License Number 18165

# HISTORY OF GOVERNMENT CORNER

County of Anoka

State of Minnesota

West 1/4 Corner of Sec. 6 Township 32 Range 25

## **CORNER HISTORY:**

**December 18, 1969** - Set cast iron monument using area resurvey and established ties to monument. Set steel sign and post 0.5'± north of monument.

January 21, 1974 - Found cast iron monument and updated ties.

June 21, 1976 - Found cast iron monument and updated ties.

June 15, 1979 - Found cast iron monument and updated ties.

August 11, 1982 - Found cast iron monument and updated ties.

July 5, 1988 - Found cast iron monument and updated ties.

August 18, 1993 - Found cast iron monument and updated ties.

January 27, 2000 - Found cast iron monument with sign and post on north side and established NAD 1983 (1996 Adjustment) Anoka County Project Coordinates by Static GPS methods. Updated ties.

June 10, 2010 - Found cast iron monument up 0.2'± with 6' post on north side (no sign) and updated ties.

February 16, 2016 - Found cast iron monument up 0.2'± with 6' post on north side. Added sign to post and updated ties. Verified location of corner by VRS GPS methods.