

CERTIFICATE OF LOCATION OF GOVERNMENT CORNER

County of Anoka

State of Minnesota

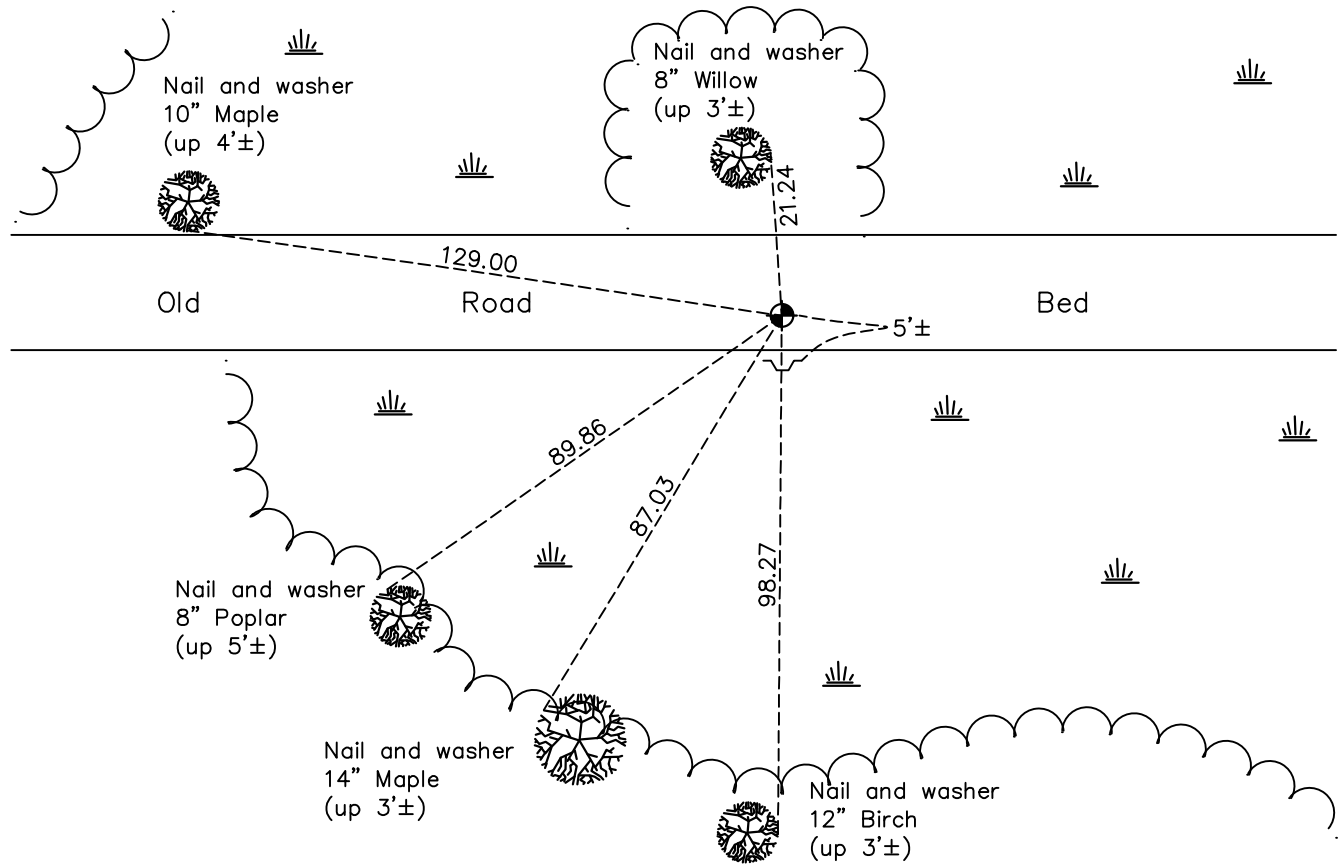
North 1/4 Corner of Sec. 1 Township 32 Range 24

On the 4th day of January, 1963, the described corner was evidenced by area resurvey

and to perpetuate the location of said corner, at the exact location thereof, a permanent marker was placed consisting of a cast iron monument with a sign and post on the south side of the road bed

AND on the 27th day of June, 2022, said permanent marker was found broken and replaced with new CIM down 0.4'±. Verified position by VRS GPS methods. Updated ties.

Updated reference ties are as shown below.



Revision Date
7/7/2022

N.A.D. 1983 Coordinates
(1996 Adjustment)

County Project Coordinates	
Northing	<u>195843.5248</u>
Easting	<u>497696.8062</u>
Date	<u>7/25/00</u>

I hereby certify that this United States public land survey monument record is correct and complete to the best of my knowledge and belief.

David Zieglmeier Date 1/18/23

David M. Zieglmeier, Anoka County Surveyor
Minnesota License Number 46179

HISTORY OF GOVERNMENT CORNER

Page No. 2

County of Anoka

State of Minnesota

North 1/4 Corner of Sec. 1 Township 32 Range 24

CORNER HISTORY:

September 19, 1962 - Set cast iron monument down 0.5'± in south rut of old road through swamp using area resurvey. Also set 3/4" red iron pipe 4.00' south of monument (up 1'±). Unable to establish ties until Winter.

January 4, 1963 - Established ties to cast iron monument previously set.

August 13, 1964 - Found cast iron monument and updated ties.

Summer 1968 - Found location wet.

June 13, 1972 - Found location wet.

May 24, 1976 - Found cast iron monument and updated ties.

May 31, 1979 - Found cast iron monument and updated ties.

June 21, 1982 - Found cast iron monument and updated ties.

April 19, 1983 - Found cast iron monument missing and ties gone. Reset position of corner with a cast iron monument using area resurvey and re-established ties to monument. Set sign and post on south side of old road bed.

August 1, 1988 - Found cast iron monument with sign and post on south side and updated ties.

July 23, 1993 - Found cast iron monument with sign and post on south side and updated ties.

June 24, 1999 - Removed cast iron monument and replaced with new solid cast iron monument. Updated ties.

July 25, 2000 - Found cast iron monument with sign and post on south side. Established NAD 1983 (1996 adj.) Anoka County project coordinates by static GPS methods. Updated ties.

January 19, 2011 - Found cast iron monument with sign and post on south side and updated ties.

January 15, 2016 - Found cast iron monument down 1'± with sign and post on south side and updated ties.

October 1, 2020 - Found cast iron monument down 1'± and leaning easterly. Verified position by VRS GPS methods. Updated ties.

June 27, 2022 - Found cast iron monument broken and replaced with new cast iron monument down 0.4'±. Verified position by VRS GPS methods. Updated ties.