

# CERTIFICATE OF LOCATION OF GOVERNMENT CORNER

County of Anoka

State of Minnesota

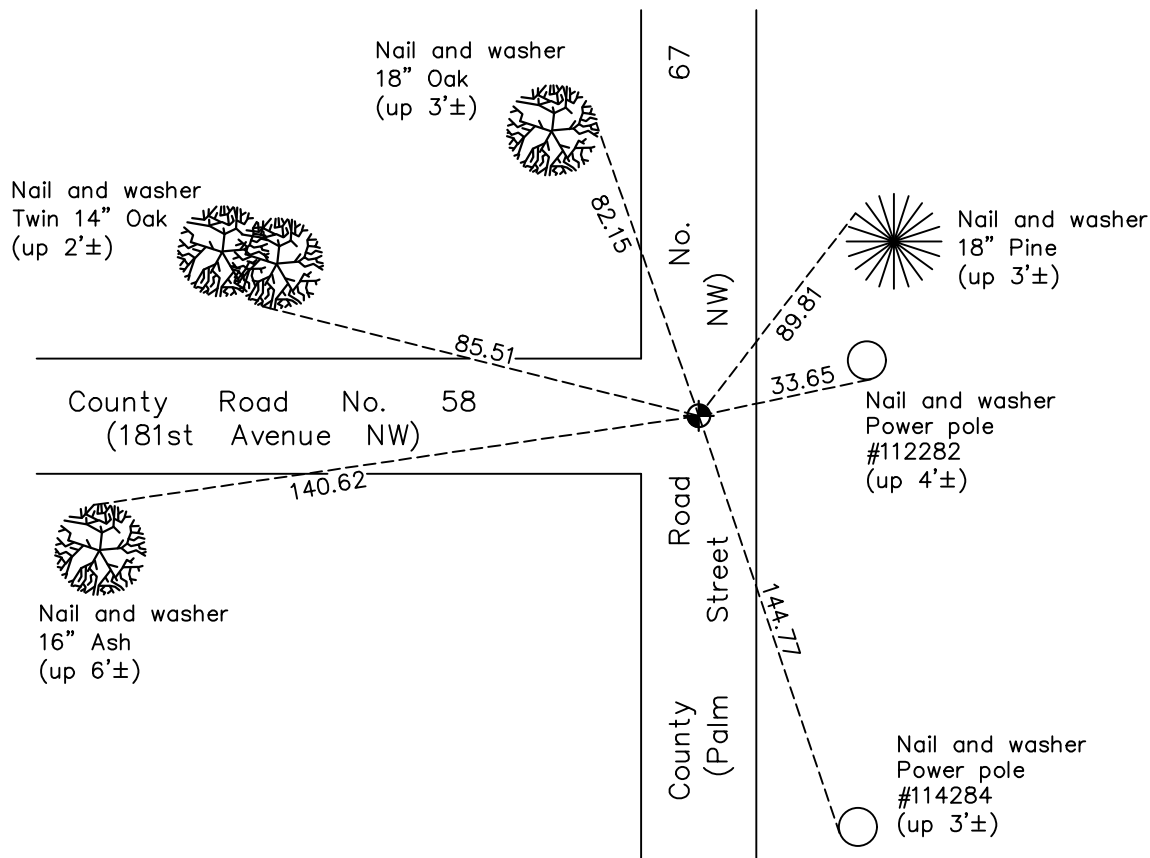
## Northeast Corner of Sec. 2 Township 32 Range 24

On the 3rd day of July, 1968, the described corner was evidenced by a granite monument under a 1/2" iron pipe

and to perpetuate the location of said corner, at the exact location thereof, a permanent marker was placed consisting of a cast iron monument set on top of granite monument

AND on the 17th day of July, 2023, said permanent marker was reset with 8" CIM set in concrete after road construction. Verified position by ACS RTK GPS mehod & updated ties after setting.

Updated reference ties are as shown below.



N.A.D. 1983 Coordinates  
(1996 Adjustment)

County Project Coordinates	
Northing	<u>195852.4413</u>
Easting	<u>495066.5723</u>
Date	<u>07/25/00</u>

I hereby certify that this United States public land survey monument record is correct and complete to the best of my knowledge and belief.

David Zieglsmeier Date 12/6/23

David M. Zieglsmeier, Anoka County Surveyor  
Minnesota License Number 46179

Revision Date  
10/02/2023

# HISTORY OF GOVERNMENT CORNER

Page No. 2A

County of Anoka

State of Minnesota

## Northeast Corner of Sec. 2 Township 32 Range 24

### **CORNER HISTORY:**

September 1847 - This corner was established by James M. Marsh, Deputy Surveyor. Marsh marked the position by "set post at section corner" with three bearing trees as accessories.

July 22, 1960 - Found granite monument under an iron pipe (down 2'±) and established ties to monument.

July 22, 1965 - Replaced iron pipe with a new 1/2" iron pipe on top of granite monument and flush with the blacktop road surface. Updated ties.

July 3, 1968 - Replaced 1/2" iron pipe with a cast iron monument on top of granite monument and flush with the blacktop road surface. Set P.K. nails 2.00' North and East of monument and updated ties.

7/22/71, 7/16/75, 7/17/78, 7/21/81, 8/7/84, 1/28/92 - Found cast iron monument and updated ties.

July 25, 2000 - Found cast iron monument and established NAD 1983 (1996 Adjustment) Anoka County Project Coordinates by Static GPS methods. Updated ties.

January 13, 2011 - Found cast iron monument flush with the road surface and updated ties.

May 10, 2011 - Found cast iron monument, loosened top for road overlay and updated ties.

11/19/15, 9/24/20 - Found cast iron monument flush with the road surface, verified position by VRS GPS method and updated ties.

April 12, 2023 - Found cast iron monument flush with the road surface, verified position by RTK GPS method and updated ties. Removed cast iron monument for road construction.

July 17, 2023 - Reset w/ 8" CIM set in concrete after road construction. Verified position with ACS RTK GPS method and updated ties after setting. Job #23-121