

CERTIFICATE OF LOCATION OF GOVERNMENT CORNER

County of Anoka

State of Minnesota

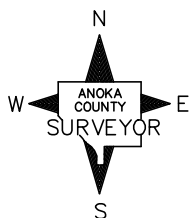
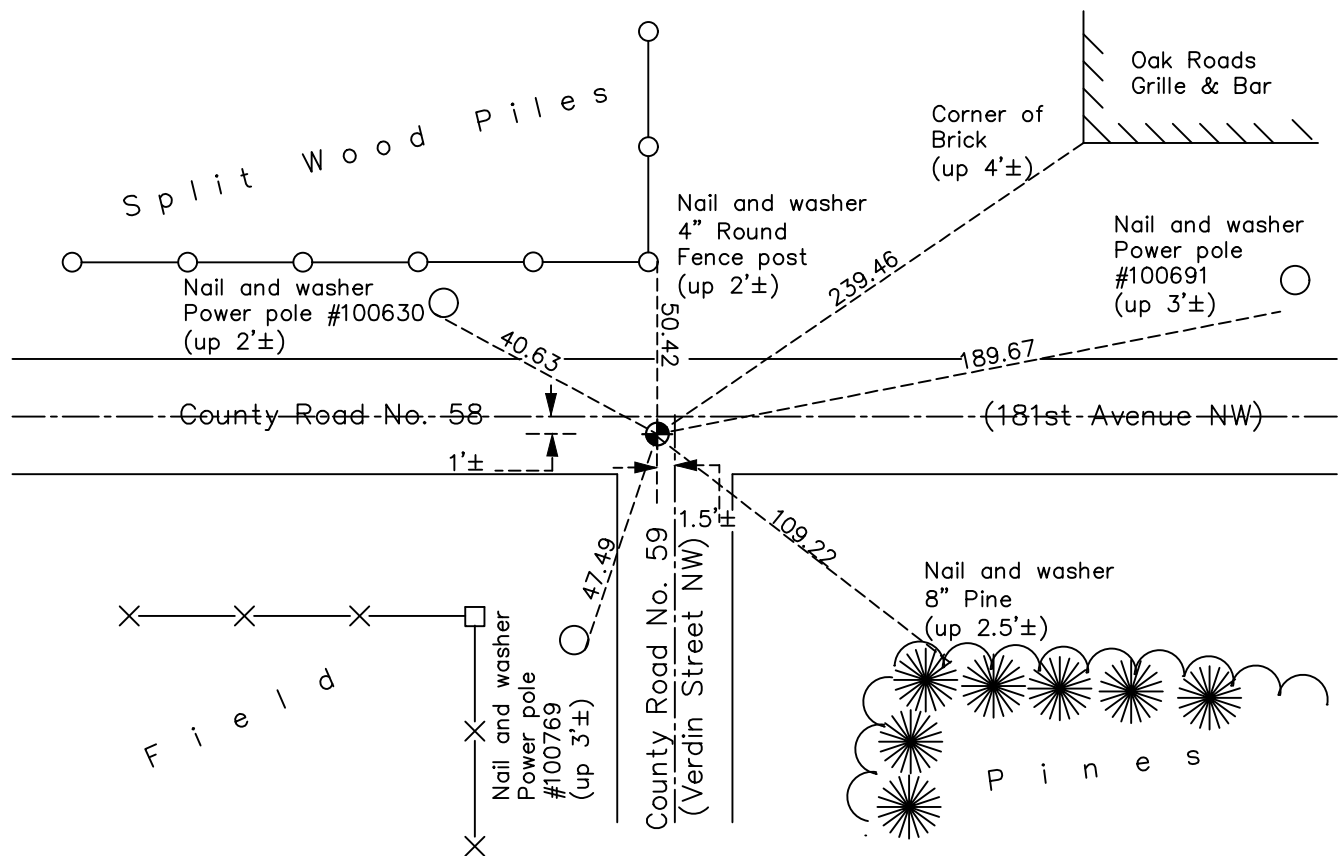
Northeast Corner of Sec. 4 Township 32 Range 24

On the 6th day of July, 1960, the described corner was evidenced by a granite monument

and to perpetuate the location of said corner, at the exact location thereof, a permanent marker was placed consisting of a cast iron monument on top of the granite monument

AND on the 29th day of September, 2022, said permanent marker was Reset CIM flush to surface after construction, and the ties were updated

Updated reference ties are as shown below.



Revision Date
 10/20/2022

N.A.D. 1983 Coordinates
 (1996 Adjustment)

County Project Coordinates	
Northing	195798.2288
Easting	484543.5332
Date	7/25/00

I hereby certify that this United States public land survey monument record is correct and complete to the best of my knowledge and belief.

David Zieglermeier Date 1/18/23

David M. Zieglermeier, Anoka County Surveyor
 Minnesota License Number 46179

HISTORY OF GOVERNMENT CORNER

Page No. 5A

County of Anoka

State of Minnesota

Northeast Corner of Sec. 4 Township 32 Range 24

CORNER HISTORY:

July 6, 1960 – Found granite monument set down 1.3'±. Set iron pipe on north side of monument. Established ties to monument.

July 27, 1965 - Found granite monument and updated ties.

July 3, 1968 - Set cast iron monument on top of granite monument and flush with the road surface. Also set P.K. nails 2.00' North and East of monument. Updated ties.

July 26, 1971 - Raised cast iron monument to flush with the road surface and updated ties.

July 16, 1975 - Found cast iron monument and updated ties.

July 17, 1978 - Found cast iron monument and updated ties.

July 22, 1981 - Found cast iron monument and updated ties.

July 15, 1987 - Found cast iron monument and updated ties.

January 28, 1992 - Found cast iron monument and updated ties.

July 21, 1993 - Found cast iron monument and updated ties.

May 11, 1999 – Set construction ties and removed cast iron monument prior to road construction.

May 11, 1999 – Set cast iron monument after road construction using construction ties. Updated ties.

July 25, 2000 – Found cast iron monument and established NAD 1983 (1996 Adjustment) Anoka County Project Coordinates by Static GPS methods. Updated ties.

October 25, 2010 - Found cast iron monument set flush with the road surface and updated ties.

January 15, 2016 - Found cast iron monument set flush with the road surface and updated ties.

September 24, 2020 - Found cast iron monument set flush with the road surface and ties updated.

September 29, 2022 – Reset cast iron monument flush with surface after road construction using static GPS. Updated ties.