

CERTIFICATE OF LOCATION OF GOVERNMENT CORNER

County of Anoka

State of Minnesota

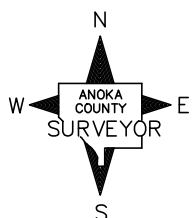
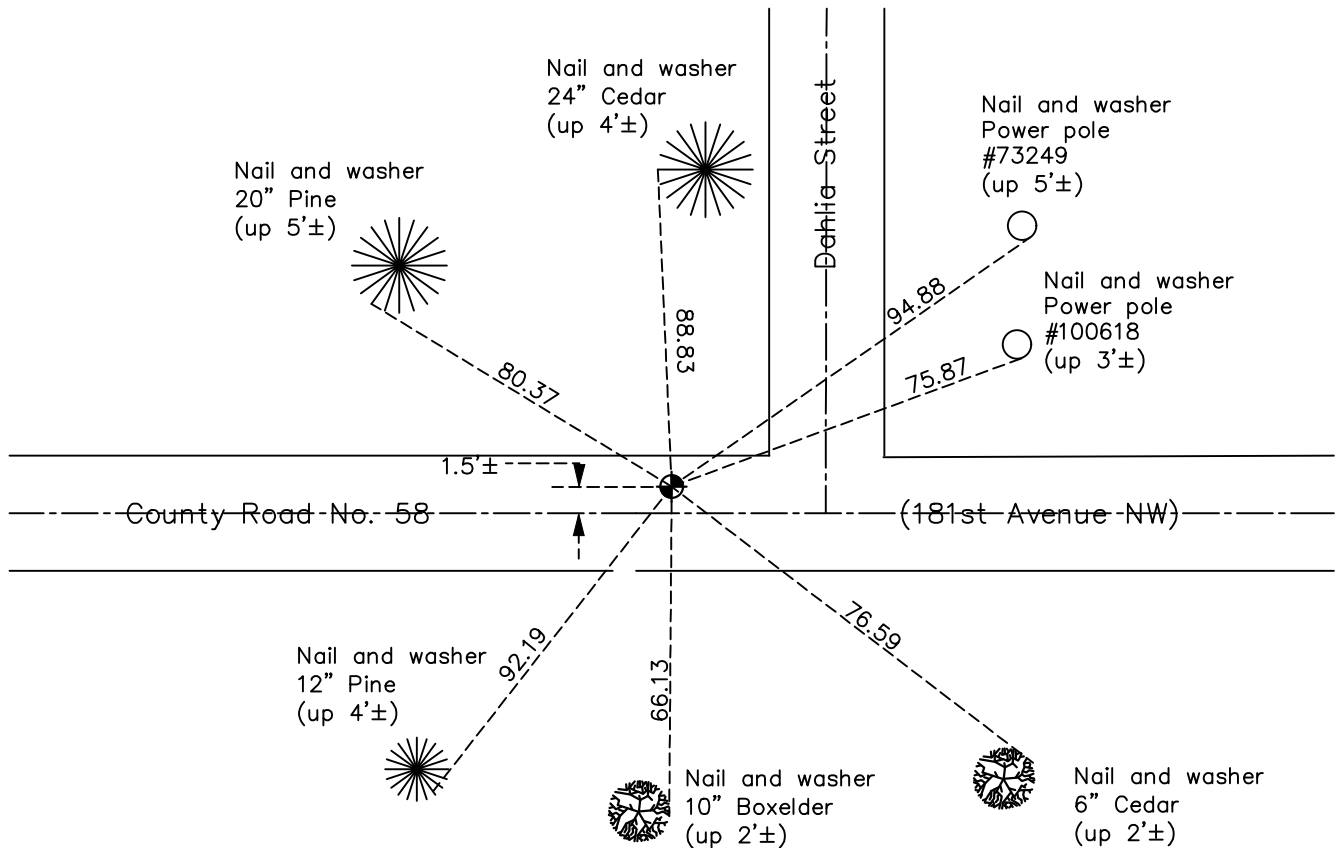
North $\frac{1}{4}$ Corner of Sec. 4 Township 32 Range 24

On the 27th day of September, 1961, the described corner was evidenced by area resurvey

and to perpetuate the location of said corner, at the exact location thereof, a permanent marker was placed consisting of a cast iron monument

AND on the 29th day of September, 2022, said permanent marker was Reset CIM flush to surface after road construction, and the ties were updated

Updated reference ties are as shown below.



Revision Date
10/20/2022

N.A.D. 1983 Coordinates
(1996 Adjustment)

County Project Coordinates	
Northing	<u>195860.4035</u>
Easting	<u>481929.4526</u>
Date	<u>7/25/00</u>

I hereby certify that this United States public land survey monument record is correct and complete to the best of my knowledge and belief.

David Zieglmeier Date 1/18/23

David M. Zieglmeier, Anoka County Surveyor
Minnesota License Number 46179

HISTORY OF GOVERNMENT CORNER

County of Anoka

State of Minnesota

North 1/4 Corner of Sec. 4 Township 32 Range 24

CORNER HISTORY:

September 27, 1961 - Set 1/2" iron pipe in centerline of County Road No. 58 using government proration on a straight line between the Northwest corner and the Northeast corner of Section 4 and established ties to monument.

August 13, 1964 - Found 1/2" iron pipe and updated ties.

July 5, 1968 - Replaced 1/2" iron pipe with a cast iron monument and set P.K. nails 2.00' North and East. Updated ties.

June 20, 1972 - Found cast iron monument and updated ties.

May 24, 1976 - Found cast iron monument and updated ties.

May 29, 1979 - Found cast iron monument and updated ties.

June 23, 1982 - Found cast iron monument and updated ties.

May 30, 1985 - Found cast iron monument and updated ties.

July 29, 1988 - Found cast iron monument and updated ties.

July 14, 1993 - Found cast iron monument and updated ties.

May 11, 1999 - Set construction ties and removed cast iron monument prior to road construction.

May 11, 1999 - Set cast iron monument flush with surface after road construction using construction ties. Updated ties.

July 25, 2000 - Found cast iron monument and established NAD 1983 (1996 Adjustment) Anoka County Project Coordinates by Static GPS methods. Updated ties.

January 4, 2011 - Found cast iron monument flush with the road surface and updated ties.

January 15, 2016 - Found cast iron monument flush with the road surface and updated ties.

September 24, 2020 - Found cast iron monument flush with surface and updated ties.

September 29, 2022 - Reset cast iron monument flush with surface after road construction using static GPS. Updated ties.