

CERTIFICATE OF LOCATION OF GOVERNMENT CORNER

County of Anoka

State of Minnesota

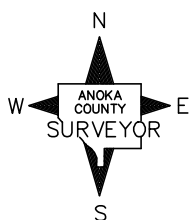
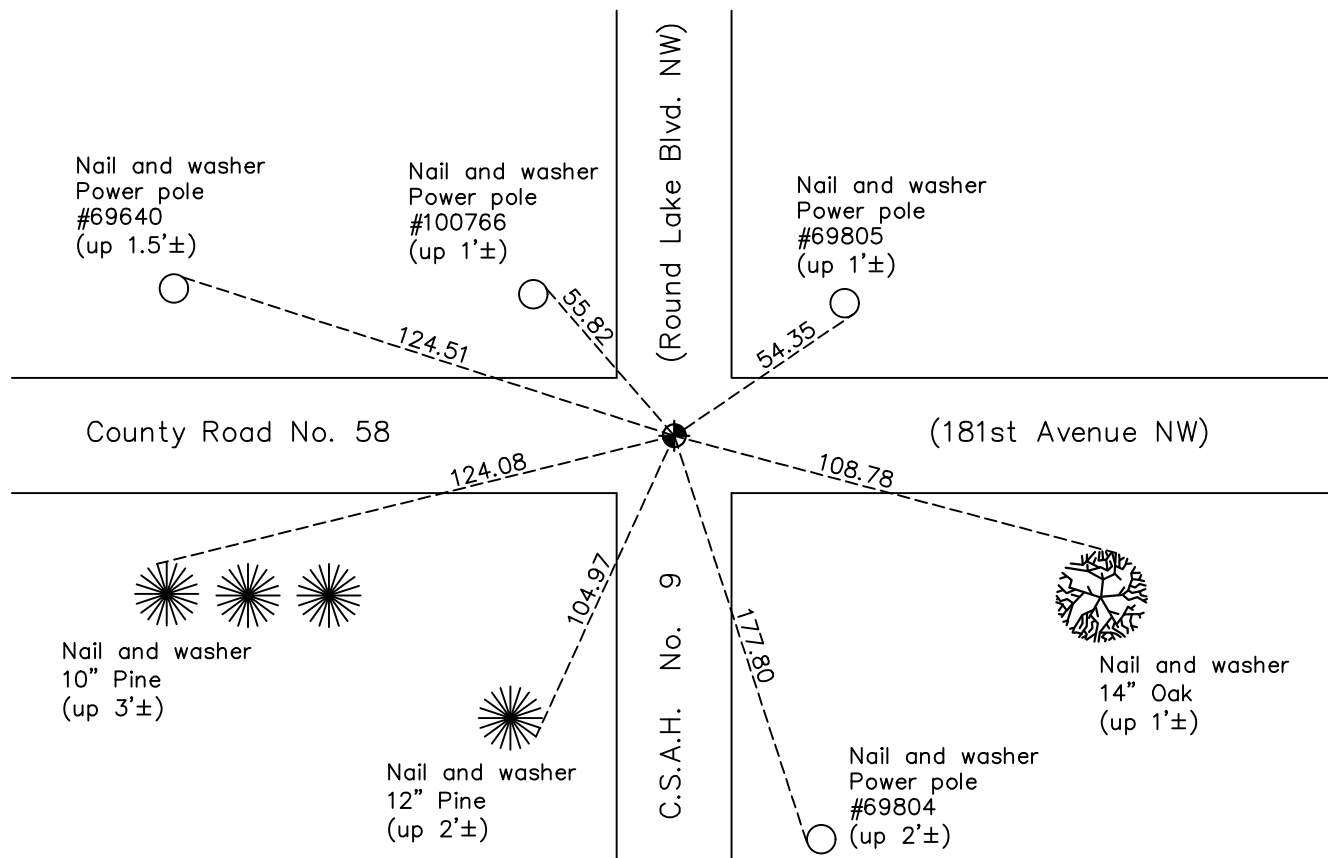
Northwest Corner of Sec. 4 Township 32 Range 24

On the 6th day of July, 1960, the described corner was evidenced by a sandstone monument

and to perpetuate the location of said corner, at the exact location thereof, a permanent marker was placed consisting of a cast iron monument

AND on the 24th day of September, 2020, said permanent marker was found flush with the surface and the ties were updated

Updated reference ties are as shown below.



Revision Date
11/17/20

N.A.D. 1983 Coordinates
(1996 Adjustment)

| County Project Coordinates | |
|----------------------------|--------------------|
| Northing | <u>195922.9294</u> |
| Easting | <u>479298.5804</u> |
| Date | <u>8/07/00</u> |

I hereby certify that this United States public land survey monument record is correct and complete to the best of my knowledge and belief.

David M. Zieglermeier Date 7/27/21

David M. Zieglermeier, Anoka County Surveyor
Minnesota License Number 46179

HISTORY OF GOVERNMENT CORNER

Page No. 7

County of Anoka

State of Minnesota

Northwest Corner of Sec. 4 Township 32 Range 24

CORNER HISTORY:

July 6, 1960 – Found sandstone monument and set iron pipe on north side of monument. Established ties to monument.

June 1965 – Replaced sandstone monument with a cast iron monument. Updated ties.

July 5, 1968 – Found cast iron monument and updated ties.

June 14, 1972 – Found cast iron monument and updated ties.

May 25, 1976 – Found cast iron monument and updated ties.

May 29, 1979 – Found cast iron monument and updated ties.

September 3, 1982 – Found cast iron monument and updated ties.

May 29, 1985 – Found cast iron monument and updated ties.

July 29, 1988 – Found cast iron monument and updated ties.

July 14, 1993 – Found cast iron monument and updated ties.

August 7, 2000 – Found cast iron monument and established NAD 1983 (1996 Adjustment) Anoka County Project Coordinates by Static GPS methods. Updated ties.

July 19, 2001 – Set construction ties and removed cast iron monument prior to road construction.

Date unknown – Set cast iron monument after road construction using construction ties. Updated ties.

January 4, 2011 – Found cast iron monument flush with the road surface and updated ties.

January 15, 2016 – Found cast iron monument flush with the road surface and updated ties.

September 24, 2020 – Found cast iron monument flush to surface and updated ties.