

CERTIFICATE OF LOCATION OF GOVERNMENT CORNER

County of Anoka

State of Minnesota

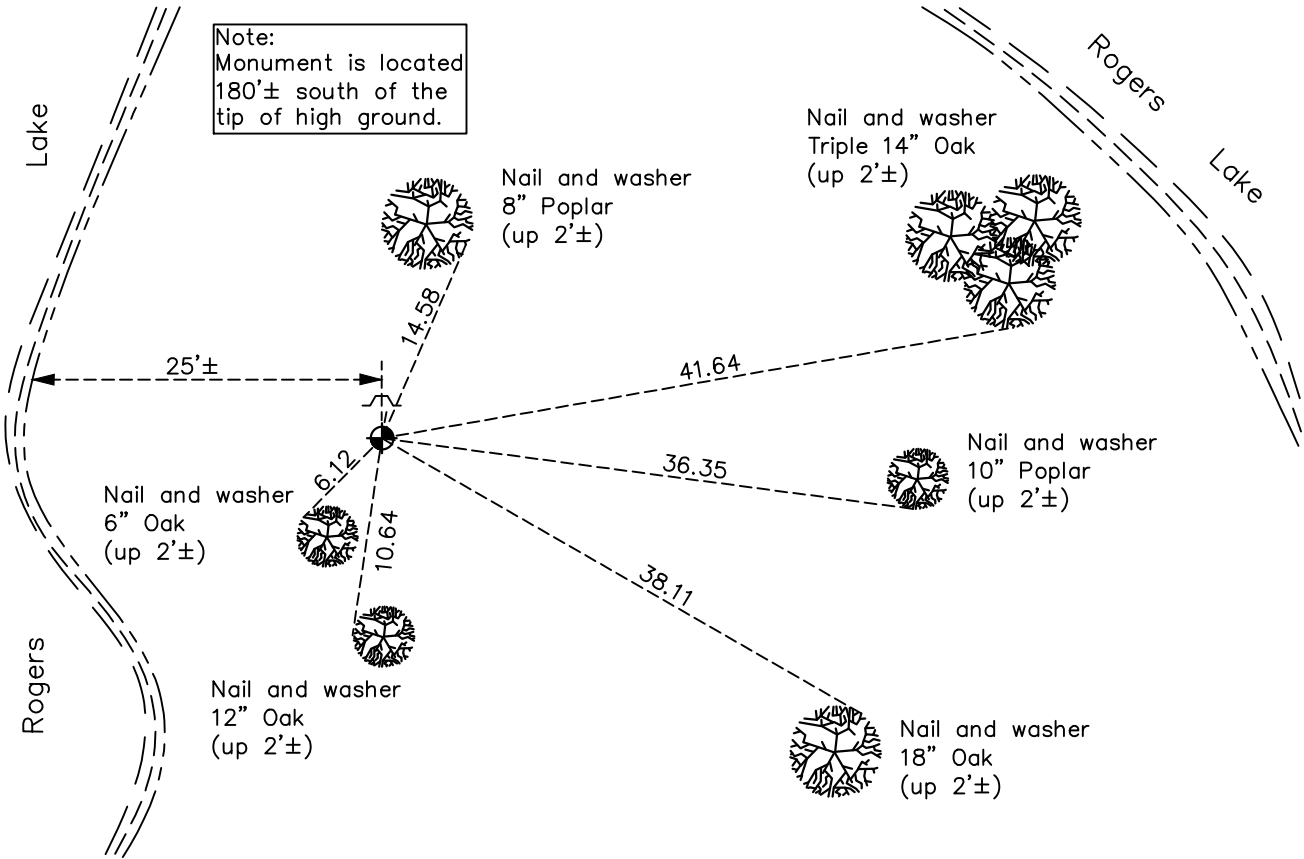
Witness Corner of Sec. 6 Township 32 Range 24
(on north line of section)

On the 22nd day of December, 1966, the described corner was evidenced by area resurvey

and to perpetuate the location of said corner, at the exact location thereof, a permanent marker was placed consisting of a cast iron monument with a sign and post on the north side

AND on the 17th day of November, 2020, said permanent marker was found flush with the surface and the ties were updated

Updated reference ties are as shown below.



Revision Date
12/28/20

N.A.D. 1983 Coordinates
 (1996 Adjustment)

County Project Coordinates	
Northing	<u>196130.1730</u>
Easting	<u>468896.6920</u>
Date	<u>1/04/01</u>

I hereby certify that this United States public land survey monument record is correct and complete to the best of my knowledge and belief.
David M Zieglsmeier Date 7/27/21
David M. Zieglsmeier, Anoka County Surveyor
 Minnesota License Number 46179

HISTORY OF GOVERNMENT CORNER

Page No. 9

County of Anoka

State of Minnesota

Witness Corner of Sec. 6 Township 32 Range 24
(on north line of section)

CORNER HISTORY:

December 22, 1965 – Set bridge spike using area resurvey. Corner is west of N1/4 of Section 6.

December 22, 1966 – Replaced bridge spike with a cast iron monument. Updated ties.

July 8, 1968 – Found cast iron monument and updated ties.

July 7, 1972 – Found cast iron monument and updated ties.

May 25, 1976 – Found cast iron monument and updated ties.

May 31, 1979 – Found cast iron monument and updated ties.

July 7, 1982 – Found cast iron monument and updated ties.

August 11, 1988 – Found cast iron monument and updated ties.

January 4, 2001 – Found cast iron monument with a sign and post on the north side and established NAD 1983 (1996 Adjustment) Anoka County Project Coordinates by Static GPS methods. Updated ties.

January 4, 2011 – Found cast iron monument flush with the surface and with a sign and post on the north side. Updated ties.

February 4, 2016 – Found cast iron monument flush with the surface and with a sign and post on the north side. Updated ties.

November 11, 2020 – Found cast iron monument flush with the surface and with a sign and post on the north side. Updated ties.