

# CERTIFICATE OF LOCATION OF GOVERNMENT CORNER

County of Anoka

State of Minnesota

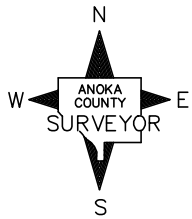
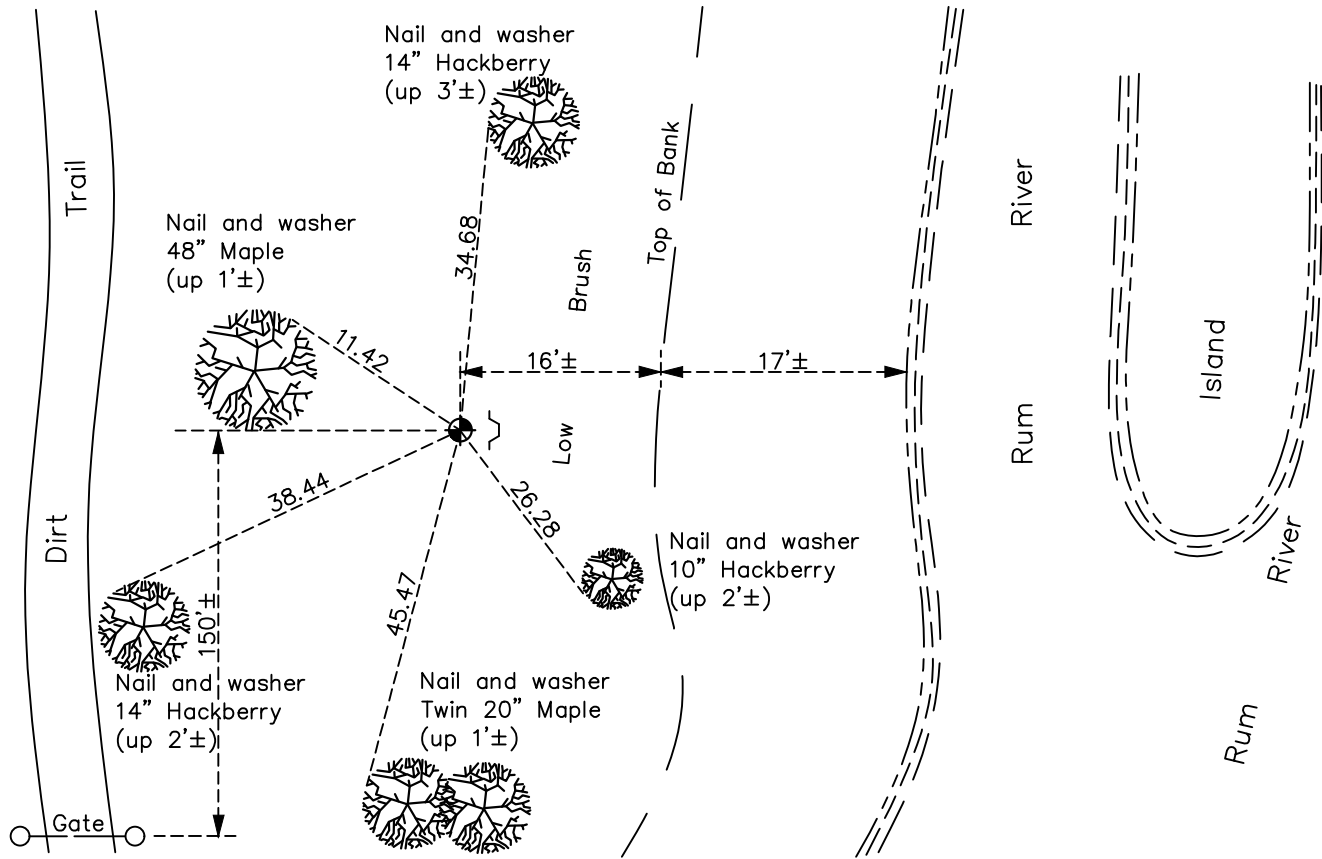
Witness Corner of Sec. 6 Township 32 Range 24  
(on north line of section and west side of Rum River)

On the 3rd day of May, 1966, the described corner was evidenced by area resurvey

and to perpetuate the location of said corner, at the exact location thereof, a permanent marker was placed consisting of a cast iron monument with a sign and post on the east side

AND on the 4th day of October, 2020, said permanent marker was found down 0.2'±  
and the ties were updated

Updated reference ties are as shown below.



Revision Date  
 12/28/20

N.A.D. 1983 Coordinates  
 (1996 Adjustment)

County Project Coordinates	
Northing	196081.7508
Easting	471346.2519
Date	12/15/00

I hereby certify that this United States public land survey monument record is correct and complete to the best of my knowledge and belief.  
*David M Zieglermeier* Date 7/27/21  
 David M. Zieglermeier, Anoka County Surveyor  
 Minnesota License Number 46179

# HISTORY OF GOVERNMENT CORNER

Page No. 9B

County of Anoka

State of Minnesota

Witness Corner of Sec. 6 Township 32 Range 24  
(on north line of section and west side of Rum River)

## **CORNER HISTORY:**

May 3, 1966 – Set cast iron monument flush with the surface using area resurvey.

July 3, 1968 – Found cast iron monument and updated ties.

August 3, 1971 – Found cast iron monument and updated ties.

July 14, 1978 – Found cast iron monument and updated ties.

July 29, 1981 – Found cast iron monument and updated ties.

August 20, 1984 – Found cast iron monument and updated ties.

June 16, 1992 – Found cast iron monument with sign and post on east side and updated ties.

December 15, 2000 – Found cast iron monument with sign and post on east side and established NAD 1983 (1996 Adjustment) Anoka County Project Coordinates by Static GPS methods. Updated ties.

February 4, 2016 – Found cast iron monument down  $0.2' \pm$  with sign and post on east side and updated ties.

October 4, 2020 – Found cast iron monument down  $0.2' \pm$  with sign and post on east side and updated ties.