

CERTIFICATE OF LOCATION OF GOVERNMENT CORNER

County of Anoka

State of Minnesota

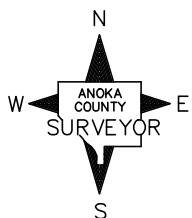
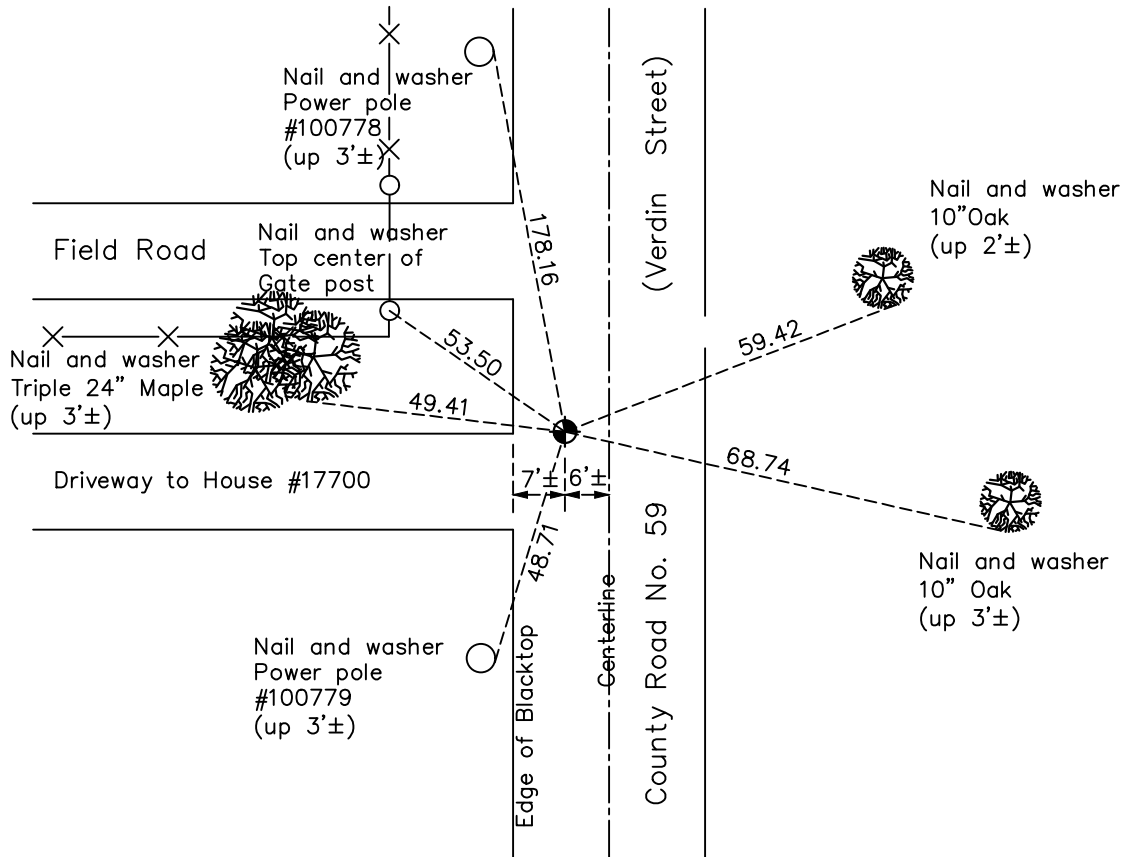
East 1/4 Corner of Sec. 4 Township 32 Range 24

On the 28th day of September, 1961, the described corner was evidenced by area resurvey

and to perpetuate the location of said corner, at the exact location thereof, a permanent marker was placed consisting of a cast iron monument

AND on the 2nd day of October, 2020, said permanent marker was found flush with the surface and the ties were updated.

Updated reference ties are as shown below.



Revision Date
 12/28/20

N.A.D. 1983 Coordinates
 (1996 Adjustment)

County Project Coordinates	
Northing	193391.9411
Easting	484585.1484
Date	8/07/00

I hereby certify that this United States public land survey monument record is correct and complete to the best of my knowledge and belief.
David M Zieglsmeier Date 7/27/21
 David M. Zieglsmeier, Anoka County Surveyor
 Minnesota License Number 46179

HISTORY OF GOVERNMENT CORNER

County of Anoka

State of Minnesota

East 1/4 Corner of Sec. 4 Township 32 Range 24

CORNER HISTORY:

September 28, 1961 – Set cast iron monument down 0.5'± in centerline of southbound lane of County Road No. 59. Corner location was determined using a straight line between the Northeast corner and the Southeast corner of Section 4 and using an old east–west fence line to the west. Established ties to monument.

August 19, 1964 – Found cast iron monument and updated ties.

July 10, 1968 – Found cast iron monument and updated ties.

June 20, 1972 – Found cast iron monument and updated ties.

May 29, 1976 – Found cast iron monument and updated ties.

May 30, 1979 – Found cast iron monument and updated ties.

June 23, 1982 – Found cast iron monument and updated ties.

July 29, 1988 – Found cast iron monument and updated ties.

July 21, 1993 – Found cast iron monument and updated ties.

Date Unknown – Set construction ties and removed cast iron monument prior to road construction.

May 5, 1997 – Set cast iron monument after road construction using construction ties. Updated ties.

August 7, 2000 – Found cast iron monument 3.5' east of west edge of blacktop and established NAD 1983 (1996 Adjustment) Anoka County Project Coordinates by Static GPS methods. Updated ties.

October 18, 2010 – Found cast iron monument 7'± east of west edge of blacktop and updated ties.

August 17, 2012 – Added spacer/s and replaced top of cast iron monument after overlay of road surface. Monument is flush with surface. Updated ties.

January 25, 2016 – Found cast iron monument flush with surface and updated ties.

October 2, 2020 – Found cast iron monument flush with surface and updated ties.