

CERTIFICATE OF LOCATION OF GOVERNMENT CORNER

County of Anoka

State of Minnesota

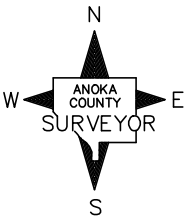
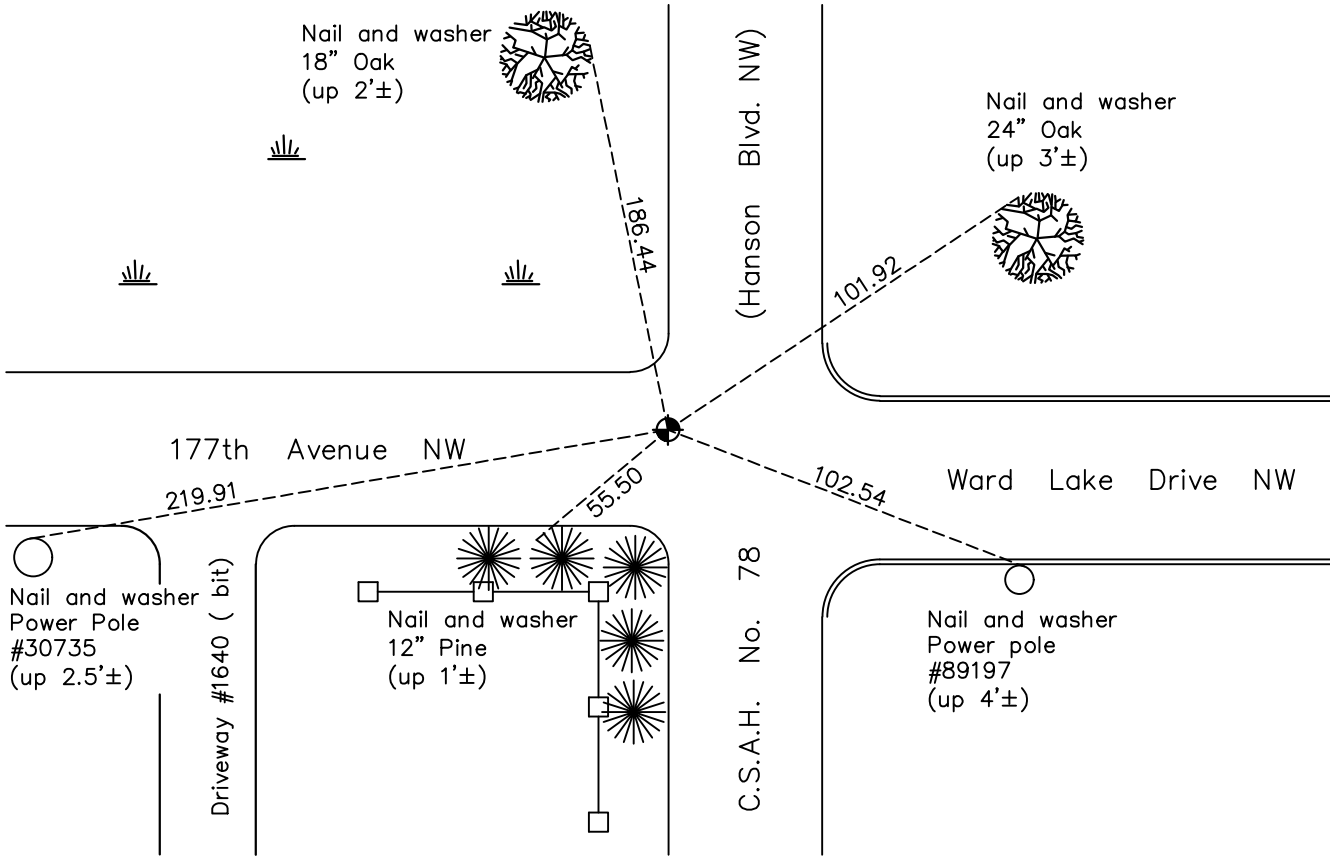
West 1/4 Corner of Sec. 2 Township 32 Range 24

On the 27th day of February, 1963, the described corner was evidenced by area resurvey

and to perpetuate the location of said corner, at the exact location thereof, a permanent marker was placed consisting of a cast iron monument

AND on the 6th day of October, 2020, said permanent marker was found flush with surface and the ties were updated

Updated reference ties are as shown below.



Revision Date
 12/28/20

N.A.D. 1983 Coordinates
 (1996 Adjustment)

County Project Coordinates	
Northing	193224.7343
Easting	489866.5186
Date	8/04/00

I hereby certify that this United States public land survey monument record is correct and complete to the best of my knowledge and belief.
David M Zieglsmeier Date 7/27/21
 David M. Zieglsmeier, Anoka County Surveyor
 Minnesota License Number 46179

HISTORY OF GOVERNMENT CORNER

Page No. 13

County of Anoka

State of Minnesota

West 1/4 Corner of Sec. 2 Township 32 Range 24

CORNER HISTORY:

February 27, 1963 – Set 3/4" X 6' iron pipe up 2.5' above surface with red and white stripes using area resurvey. Established ties to monument.

February 13, 1964 – Replaced 3/4" iron pipe, bent over by bulldozer, with a 2" X 8' iron pipe. Updated ties.

August 14, 1964 – Found 2" iron pipe and updated ties.

July 11, 1968 – Found 2" iron pipe and updated ties.

July 23, 1969 – Replaced 2" iron pipe with a cast iron monument set down 0.6'±. Updated ties.

June 13, 1972 – Found cast iron monument and updated ties.

May 24, 1976 – Found cast iron monument and updated ties.

July 18, 1979 – Found cast iron monument down 0.8'± and updated ties.

June 17, 1982 – Found cast iron monument and updated ties.

July 23, 1987 – Set construction ties prior to road construction.

October 20, 1987 – Set cast iron monument flush with surface after road construction using construction ties. Updated ties.

July 19, 1993 – Found cast iron monument and updated ties.

August 4, 2000 – Found cast iron monument and established NAD 1983 (1996 Adjustment) Anoka County Project Coordinates by Static GPS methods. Updated ties.

January 28, 2011 – Found cast iron monument flush with the surface and updated ties.

June 8, 2012 – Found cast iron monument broken and removed it.

August 15, 2012 – Reset position of corner with a P.K. nail using ties and verified position by Static GPS methods.

September 5, 2012 – Replaced P.K. nail with a cast iron monument. Updated ties.

January 22, 2016 – Found cast iron monument flush with the surface and updated ties.

October 6, 2020 – Found cast iron monument flush with the surface and updated ties.