

CERTIFICATE OF LOCATION OF GOVERNMENT CORNER

County of Anoka

State of Minnesota

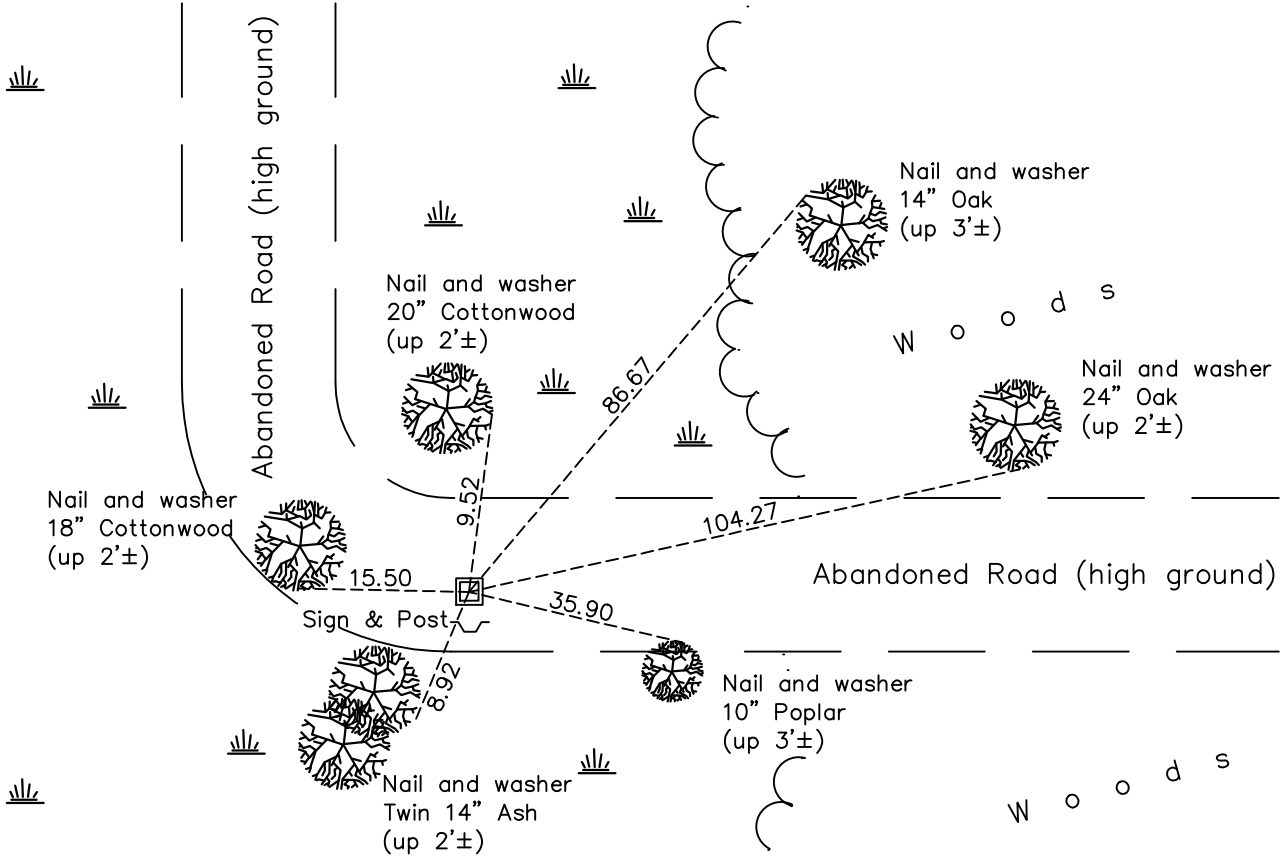
West 1/4 Corner of Sec. 1 Township 32 Range 24

On the 14th day of December, 1962, the described corner was evidenced by area resurvey

and to perpetuate the location of said corner, at the exact location thereof, a permanent marker was placed consisting of a red & white 2" square steel Telspar monument up 1'± with a 'County Surveyor" cap set over 3/4" open end pipe standing 18" out of ground

AND on the 6th day of October, 2020, said permanent marker was found with sign and post on south side and the ties were updated.

Updated reference ties are as shown below.



N
W ANOKA COUNTY SURVEYOR E
S

Revision Date
12/30/20

N.A.D. 1983 Coordinates
(1996 Adjustment)

County Project Coordinates	
Northing	193259.0580
Easting	495118.7199
Date	12/01/00

I hereby certify that this United States public land survey monument record is correct and complete to the best of my knowledge and belief.

David M Zieglsmeier Date 7/27/21

David M. Zieglsmeier, Anoka County Surveyor
Minnesota License Number 46179

HISTORY OF GOVERNMENT CORNER

County of Anoka

State of Minnesota

West 1/4 Corner of Sec. 1 Township 32 Range 24

CORNER HISTORY:

December 14, 1962 – Set 1" X 8' iron pipe up 3.5' with painted red and white stripes using area resurvey and established ties to monument.

August 13, 1964 – Found 1" iron pipe and updated ties.

July 12, 1968 – Found 1" iron pipe and updated ties.

June 12, 1972 – Found 1" iron pipe and updated ties.

January 23, 1974 – Found 1" iron pipe and updated ties.

May 24, 1976 – Found 1" iron pipe and updated ties.

May 30, 1979 – Found 1" iron pipe and updated ties.

June 22, 1982 – Found 1" iron pipe and updated ties.

June 4, 1985 – Found 1" iron pipe and updated ties.

August 11, 1988 – Found 1" iron pipe and updated ties.

July 26, 1993 – Found 1" iron pipe and updated ties.

December 1, 2000 – Found 3/4" open end iron pipe up 1.5'± and established NAD 1983 (1996 Adjustment) Anoka County Project Coordinates by Static GPS methods. Updated ties.

January 13, 2011 – Found 3/4" iron pipe and updated ties.

March 14, 2011 – Set red and white 2" square steel Telspar monument up 1'± over 3/4" iron pipe using ties. Telspar monument has 'County Surveyor' cap with punchmark at location of corner. Verified location of corner by VRS GPS methods. Set sign and post on south side of monument and updated ties.

January 8, 2016 – Found red and white 2" square steel Telspar monument up 1'±. Telspar monument has 'County Surveyor' cap with punchmark at location of corner. Updated ties.

October 6, 2020 – Found red and white 2" square steel Telspar monument up 1'±. Telspar monument has 'County Surveyor' cap with punchmark at location of corner. Updated ties.