

CERTIFICATE OF LOCATION OF GOVERNMENT CORNER

County of Anoka

State of Minnesota

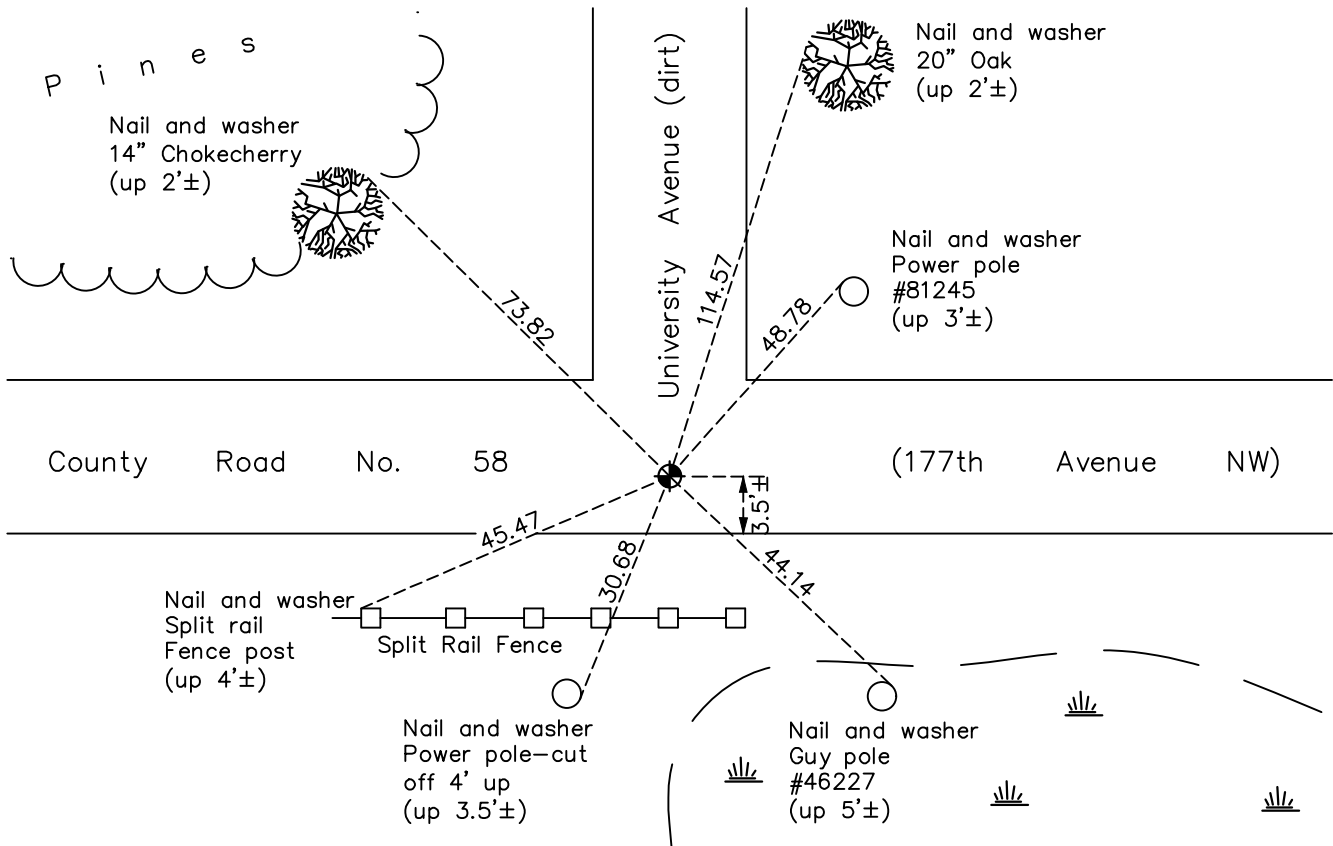
East 1/4 Corner of Sec. 1 Township 32 Range 24

On the 25th day of September, 1962, the described corner was evidenced by area resurvey

and to perpetuate the location of said corner, at the exact location thereof, a permanent marker was placed consisting of a cast iron monument

AND on the 17th day of July, 2023, said permanent marker was reset with 8" CIM set in concrete after road construction. Verified position by ACS RTK GPS method & updated ties after setting.

Updated reference ties are as shown below.



Revision Date
 10/03/2023

N.A.D. 1983 Coordinates
 (1996 Adjustment)

County Project Coordinates	
Northing	193197.9195
Easting	500359.1096
Date	7/25/00

I hereby certify that this United States public land survey monument record is correct and complete to the best of my knowledge and belief.

David Zieglermeier Date 12/6/23

David M. Zieglermeier, Anoka County Surveyor
 Minnesota License Number 46179

HISTORY OF GOVERNMENT CORNER

Page No. 15

County of Anoka

State of Minnesota

East 1/4 Corner of Sec. 1 Township 32 Range 24

CORNER HISTORY:

August 1847 - This corner was established by James M. Marsh, Deputy Surveyor. Marsh marked the position by "set post at quarter section corner" with two bearing trees as accessories.

September 25, 1962 - Set cast iron monument using area resurvey and established ties to monument.

8/13/64, 7/19/66, 7/12/68, 6/15/72, 5/24/76, 5/30/79, 6/22/82, 6/4/85

8/11/88, 7/23/93 - Found cast iron monument and updated ties.

July 25, 2000 - Found cast iron monument and established NAD 1983 (1996 Adjustment) Anoka County Project Coordinates by Static GPS methods. Updated ties.

1/19/11, 1/22/16 - Found cast iron monument and updated ties.

October 1, 2020 - Found cast iron monument, verified position by RTK GPS method and updated ties.

April 12, 2023 - Found cast iron monument, verified position by RTK GPS method and updated ties. Removed cast iron monument for road construction.

July 17, 2023 - Reset w/ 8" Cast Iron Monument set in concrete after road construction. Verified position with ACS RTK GPS method and updated ties after setting. Job #23-121