

CERTIFICATE OF LOCATION OF GOVERNMENT CORNER

County of Anoka

State of Minnesota

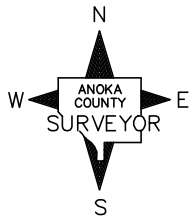
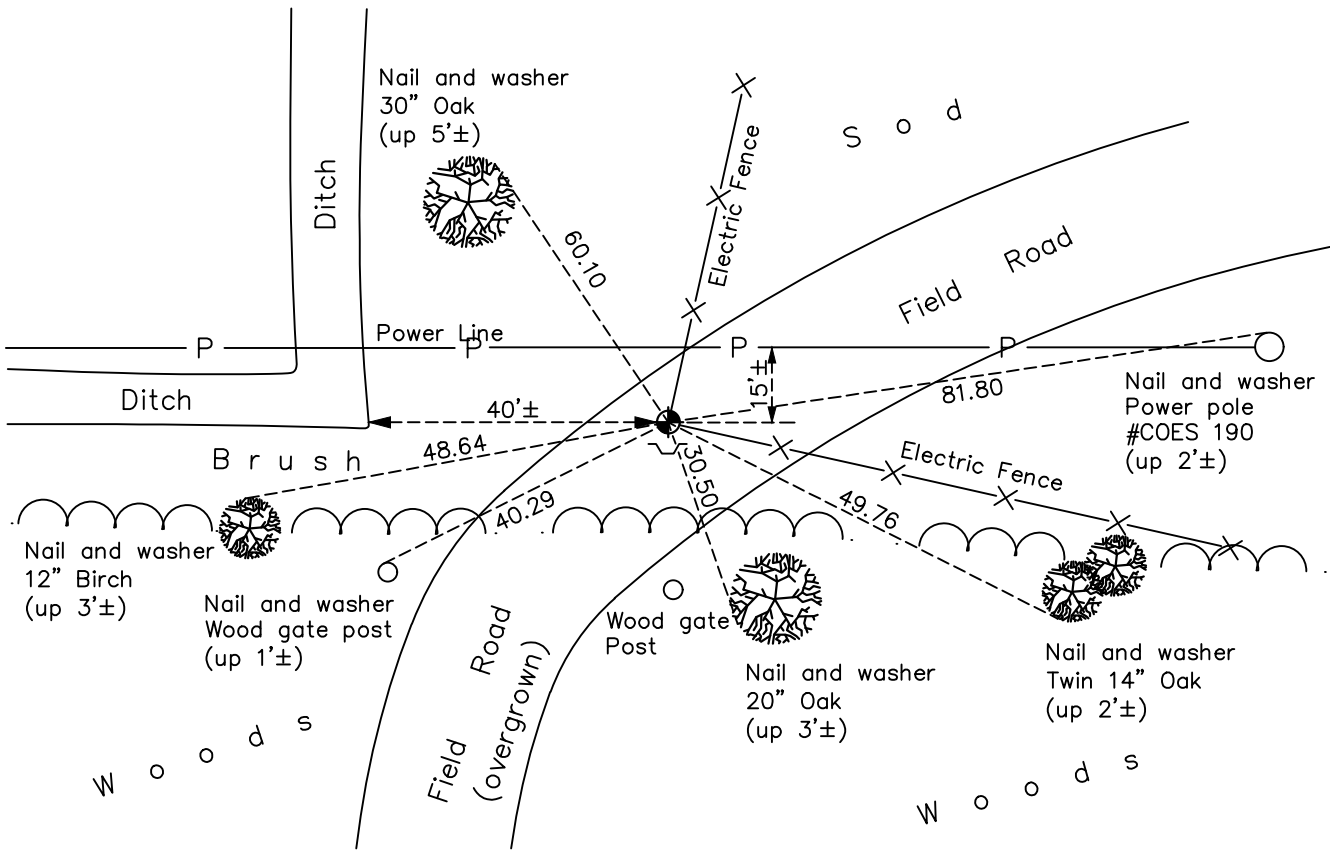
North 1/4 Corner of Sec. 11 Township 32 Range 24

On the 17th day of July, 1962, the described corner was evidenced by area resurvey

and to perpetuate the location of said corner, at the exact location thereof, a permanent marker was placed consisting of a cast iron monument

AND on the 13th day of November, 2020, said permanent marker was found down 0.5'± and the ties were updated. Found a sign and post 1'± south of monument.

Updated reference ties are as shown below.



Revision Date

12/30/20

N.A.D. 1983 Coordinates
(1996 Adjustment)

County Project Coordinates	
Northing	190621.0508
Easting	492546.5905
Date	12/07/00

I hereby certify that this United States public land survey monument record is correct and complete to the best of my knowledge and belief.

David M Zieglsmeier Date 7/27/21

David M. Zieglsmeier, Anoka County Surveyor
Minnesota License Number 46179

HISTORY OF GOVERNMENT CORNER

County of Anoka

State of Minnesota

North 1/4 Corner of Sec. 11 Township 32 Range 24

CORNER HISTORY:

July 17, 1962 – Set cast iron monument using area resurvey and established ties to monument.

August 14, 1964 – Found cast iron monument and updated ties.

July 11, 1968 – Found cast iron monument and updated ties.

May 26, 1976 – Found cast iron monument and updated ties.

May 31, 1979 – Found cast iron monument and updated ties.

June 17, 1982 – Found cast iron monument and updated ties.

May 31, 1985 – Found cast iron monument down 0.5'± and updated ties.

August 12, 1988 – Found cast iron monument and updated ties.

July 26, 1993 – Found cast iron monument and updated ties.

December 7, 2000 – Found cast iron monument and established NAD 1983 (1996 Adjustment) Anoka County Project Coordinates by Static GPS methods. Updated ties.

January 11, 2011 – Found cast iron monument down 1'± and updated ties.

February 17, 2011 – Set sign and post 1'± south of cast iron monument.

January 8, 2016 – Found cast iron monument down 0.5'± and updated ties.

November 13, 2020 – Found cast iron monument down 0.5'± and updated ties.