

CERTIFICATE OF LOCATION OF GOVERNMENT CORNER

County of Anoka

State of Minnesota

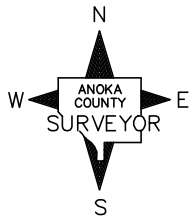
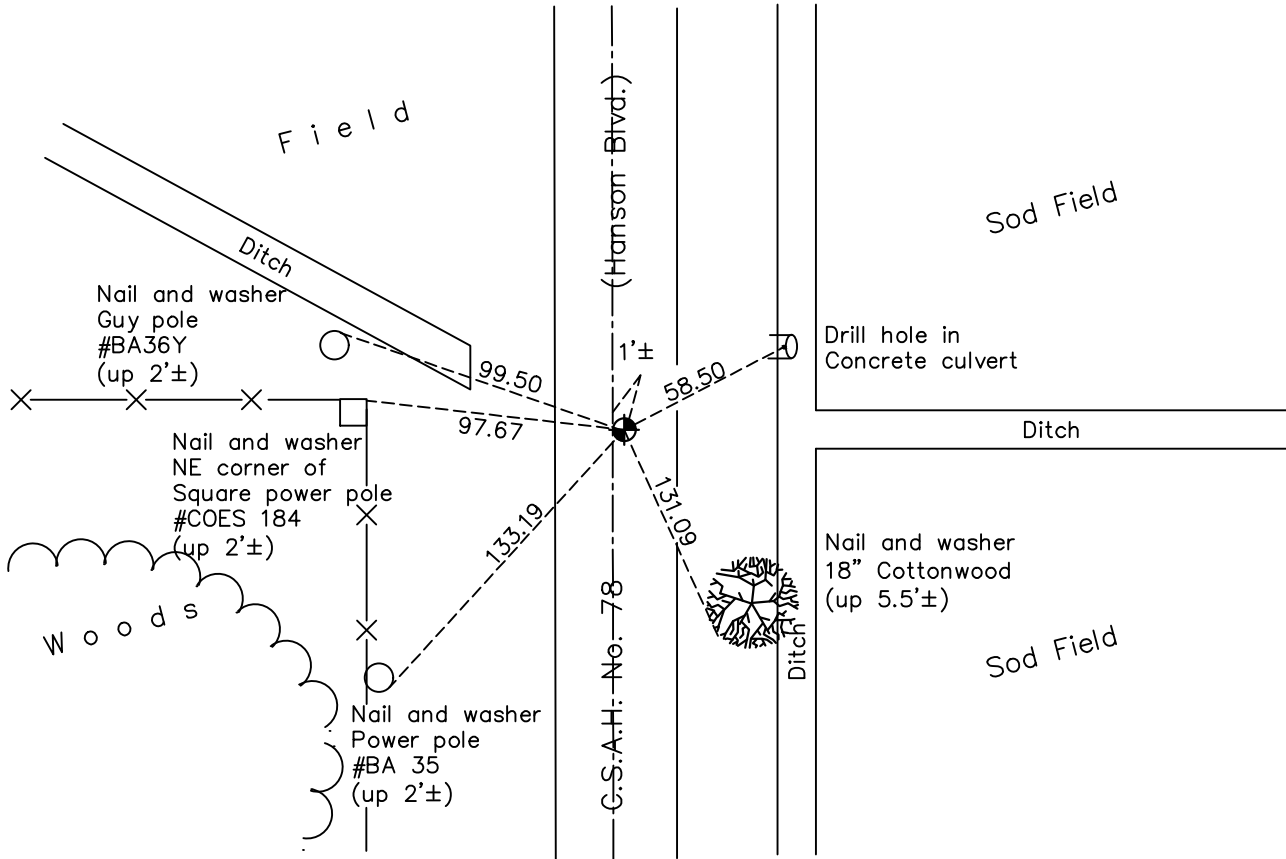
Northeast Corner of Sec. 10 Township 32 Range 24

On the 16th day of August, 1962, the described corner was evidenced by area resurvey

and to perpetuate the location of said corner, at the exact location thereof, a permanent marker was placed consisting of a cast iron monument

AND on the 20th day of October, 2020, said permanent marker was found flush with surface and updated ties.

Updated reference ties are as shown below.



Revision Date
 12/30/20

N.A.D. 1983 Coordinates
 (1996 Adjustment)

County Project Coordinates	
Northing	190601.2492
Easting	489920.5248
Date	8/04/00

I hereby certify that this United States public land survey monument record is correct and complete to the best of my knowledge and belief.
David M Zieglmeier Date 7/27/21
 David M. Zieglmeier, Anoka County Surveyor
 Minnesota License Number 46179

HISTORY OF GOVERNMENT CORNER

Page No. 20

County of Anoka

State of Minnesota

Northeast Corner of Sec. 10 Township 32 Range 24

CORNER HISTORY:

August 16, 1962 – Set 1" X 8' iron pipe up 3' and painted with 6" red and white stripes in ditch containing water using area resurvey of Section 11 and established ties to monument.

August 14, 1964 – Found 1" iron pipe and updated ties.

Summer 1968 – Corner location too wet to access.

Summer 1972 – Corner location too wet to access.

January 24, 1974 – Found 1" iron pipe and updated ties.

February 13, 1978 – Found 1" iron pipe missing and ties gone.

September 18, 1979 – Reset position of corner with a red and white iron pipe using area resurvey and established new ties to monument.

June 22, 1982 – Found red and white iron pipe and updated ties.

July 23, 1987 – Set construction ties prior to road construction.

September 3, 1987 – Set additional construction ties prior to road construction.

May 24, 1988 – Set cast iron monument flush with surface after road construction using construction ties. Also set P.K. nails 2.00' north and east of monument.

July 19, 1993 – Found cast iron monument and updated ties.

October 1, 1993 – Found cast iron monument and updated ties.

August 4, 2000 – Found cast iron monument and established NAD 1983 (1996 Adjustment) Anoka County Project Coordinates by Static GPS methods. Updated ties.

January 28, 2011 – Found cast iron monument down 0.1'± and updated ties.

June 8, 2012 – Found cast iron monument missing.

August 29, 2012 – Found cast iron monument missing. Reset position of corner with a new cast iron monument using ties and verified position by Static GPS methods.

January 22, 2016 – Found cast iron monument and updated ties.

October 20, 2020 – Found cast iron monument and updated ties.