

CERTIFICATE OF LOCATION OF GOVERNMENT CORNER

County of Anoka

State of Minnesota

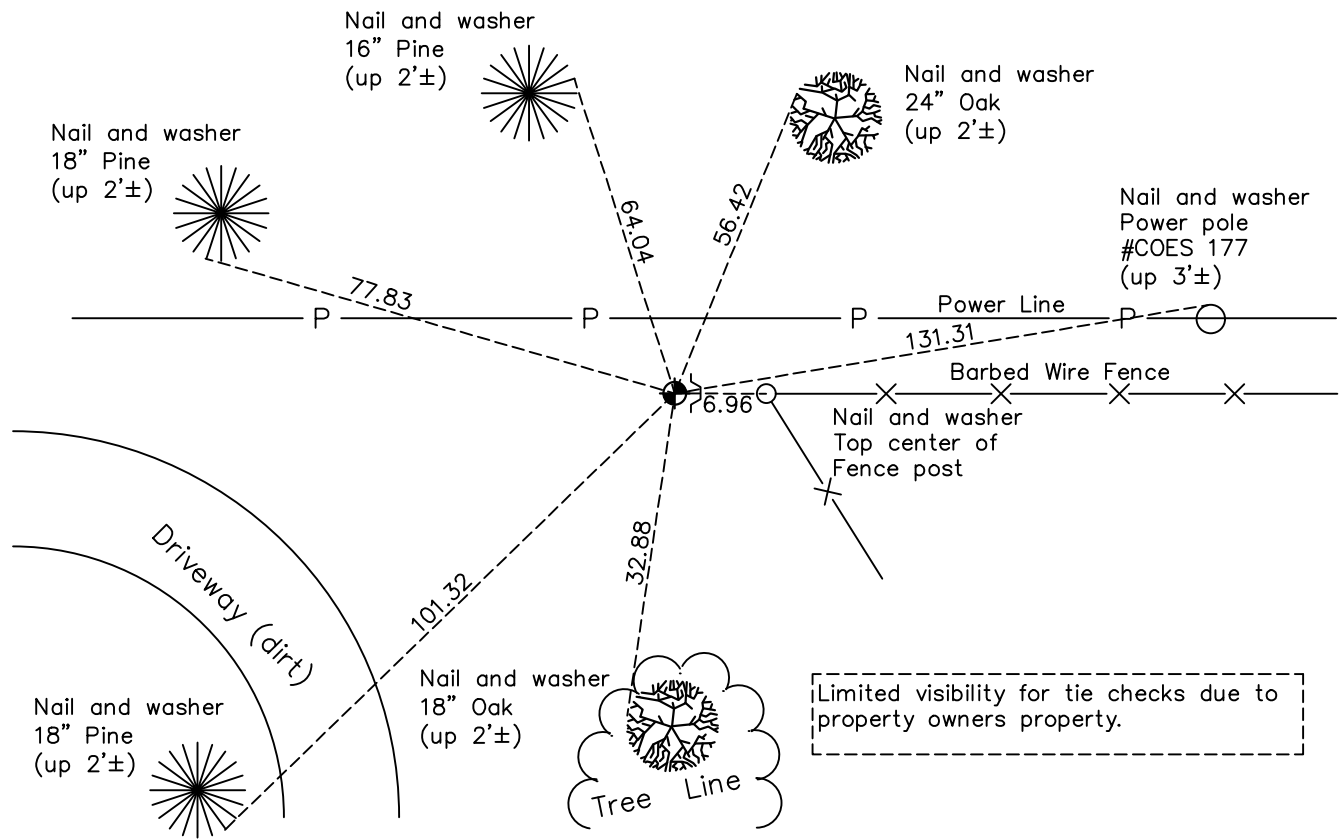
North $\frac{1}{4}$ Corner of Sec. 10 Township 32 Range 24

On the 25th day of February, 1963, the described corner was evidenced by area resurvey

and to perpetuate the location of said corner, at the exact location thereof, a permanent marker was placed consisting of a cast iron monument Note; the original cast iron monument is in place 4'± down

AND on the 25th day of May, 2023, said permanent marker was found down 1'± with a sign and post on the East side, verified position with ACS RTK and updated ties.

Updated reference ties are as shown below.



Revision Date
5/30/2023

N.A.D. 1983 Coordinates
(1996 Adjustment)

County Project Coordinates	
Northing	<u>190679.4988</u>
Easting	<u>487255.2234</u>
Date	<u>5/06/02</u>

I hereby certify that this United States public land survey monument record is correct and complete to the best of my knowledge and belief.

David Zieglermeier Date 7/26/23

David M. Zieglermeier, Anoka County Surveyor
Minnesota License Number 46179

HISTORY OF GOVERNMENT CORNER

Page No. 21

County of Anoka

State of Minnesota

North 1/4 Corner of Sec. 10 Township 32 Range 24

CORNER HISTORY:

May 1855 - This corner was established by James M. Marsh, Deputy Surveyor. Marsh marked the position by "set quarter section post" with two bearing trees as accessories.

February 25, 1963 - Set railroad spike down 0.1'± below surface of trail using area resurvey and established ties to monument.

April 18, 1963 - Replaced railroad spike with a cast iron monument set down 0.4'± below surface of trail. Updated ties.

8/14/64, 7/11/68, 6/28/72, 5/26/76 - Found cast iron monument. Updated ties.

May 31, 1979 - Replaced broken cast iron monument with a new cast iron monument set down 1.5'± below surface of trail. Updated ties.

6/18/82, 6/6/85, 8/12/88, 7/21/93 - Found cast iron monument. Updated ties.

May 6, 2002 - Found cast iron monument with a sign and post on east side and established NAD 1983 (1996 Adjustment) Anoka County Project Coordinates by Static GPS methods. Updated ties. Original cast iron monument is in place down 4'±. Date second (top) cast iron monument and sign and post were set is unknown.

1/15/11, 1/15/16 - Found cast iron monument down 1'± and updated ties.

September 2, 2020 - Owner contacted and did not allow permission onto property to check ties. Visual inspection from street appeared monument not accessible.

May 25th, 2023 - Found cast iron monument down 1'± and verified the position using ACS RTK GPS method and updated ties. Some ties were not visible due to obstructions on the property.