

CERTIFICATE OF LOCATION OF GOVERNMENT CORNER

County of Anoka

State of Minnesota

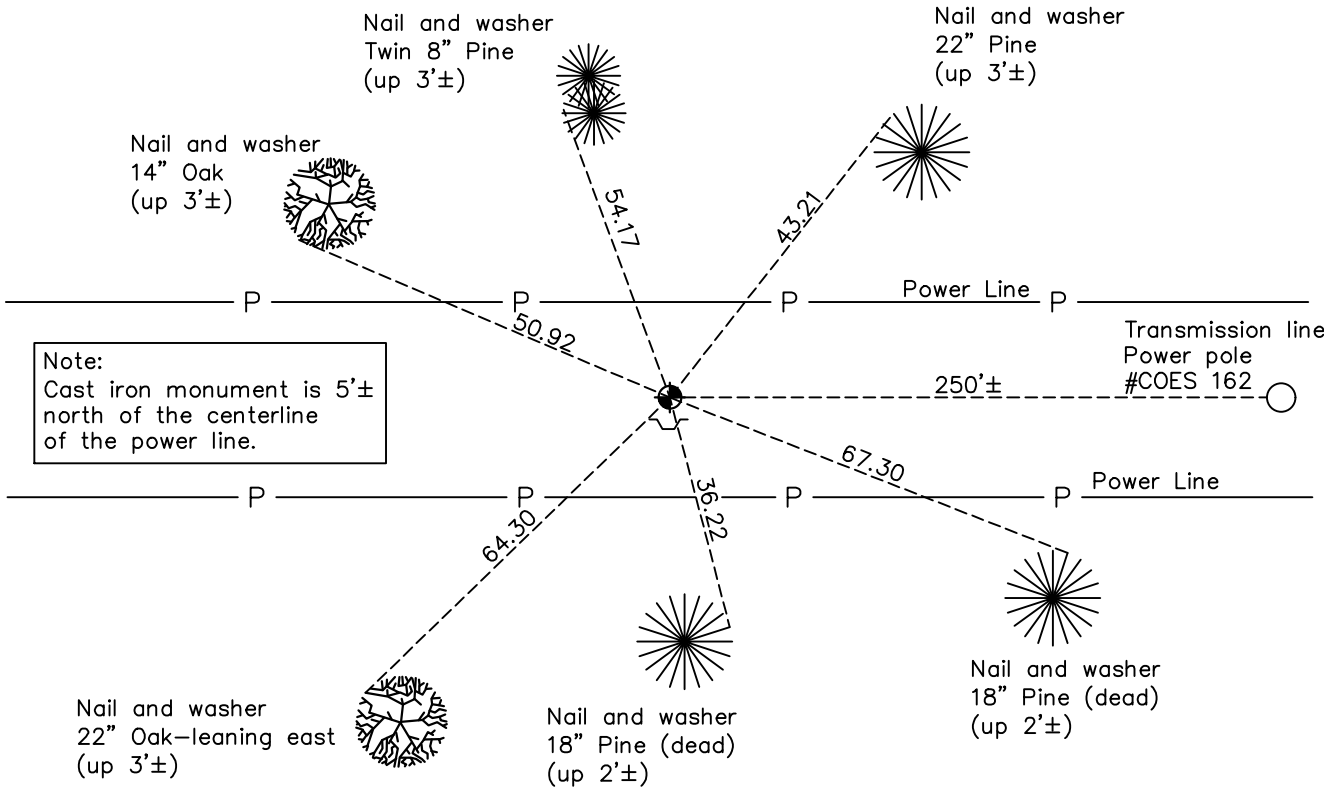
South 1/4 Corner of Sec. 4 Township 32 Range 24

On the 3rd day of November, 1961, the described corner was evidenced by area resurvey

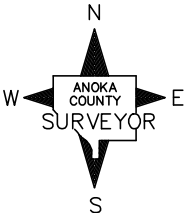
and to perpetuate the location of said corner, at the exact location thereof, a permanent marker was placed consisting of a cast iron monument with a sign and post 1'± south of monument

AND on the 23rd day of October, 2020, said permanent marker was found down 0.3'± and the ties were updated.

Updated reference ties are as shown below.



Note:
Cast iron monument is 5'± north of the centerline of the power line.

N

 S

Revision Date
 12/30/20

N.A.D. 1983 Coordinates
(1996 Adjustment)

County Project Coordinates	
Northing	190808.7786
Easting	481992.6925
Date	12/06/00

I hereby certify that this United States public land survey monument record is correct and complete to the best of my knowledge and belief.

David M. Zieglsmeier Date 7/28/21

David M. Zieglsmeier, Anoka County Surveyor
 Minnesota License Number 46179

HISTORY OF GOVERNMENT CORNER

Page No. 23

County of Anoka

State of Minnesota

South 1/4 Corner of Sec. 4 Township 32 Range 24

CORNER HISTORY:

November 3, 1961 – Set cast iron monument flush with the surface using a straight line and equal distance between the southwest corner and the southeast corner of Section 4. Established ties to monument.

August 19, 1964 – Found cast iron monument and updated ties.

July 11, 1968 – Found cast iron monument and updated ties.

June 28, 1972 – Found cast iron monument down 1'± and updated ties.

May 31, 1974 – Found cast iron monument down 1'± and updated ties after power line was built. Monument is 5'± north of power line.

May 26, 1976 – Found cast iron monument and updated ties.

May 31, 1979 – Found cast iron monument and updated ties.

June 25, 1982 – Found cast iron monument and updated ties.

June 7, 1985 – Found cast iron monument and updated ties.

August 12, 1988 – Found cast iron monument and updated ties.

August 2, 1993 – Found cast iron monument and updated ties.

December 6, 2000 – Found cast iron monument and established NAD 1983 (1996 Adjustment) Anoka County Project Coordinates by Static GPS methods. Updated ties. A sign and post was found on the north side of monument (date set is unknown).

January 5, 2011 – Found cast iron monument and updated ties. Sign and post were found missing.

February 16, 2011 – Set sign and post 1'± south of monument.

January 20, 2016 – Found cast iron monument down 0.3'± with sign and post 1'± south of monument and updated ties.

October 23, 2020 – Found cast iron monument down 0.3'± with sign and post 1'± south of monument and updated ties.