

# CERTIFICATE OF LOCATION OF GOVERNMENT CORNER

County of Anoka

State of Minnesota

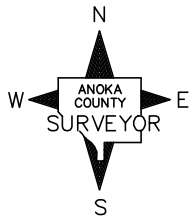
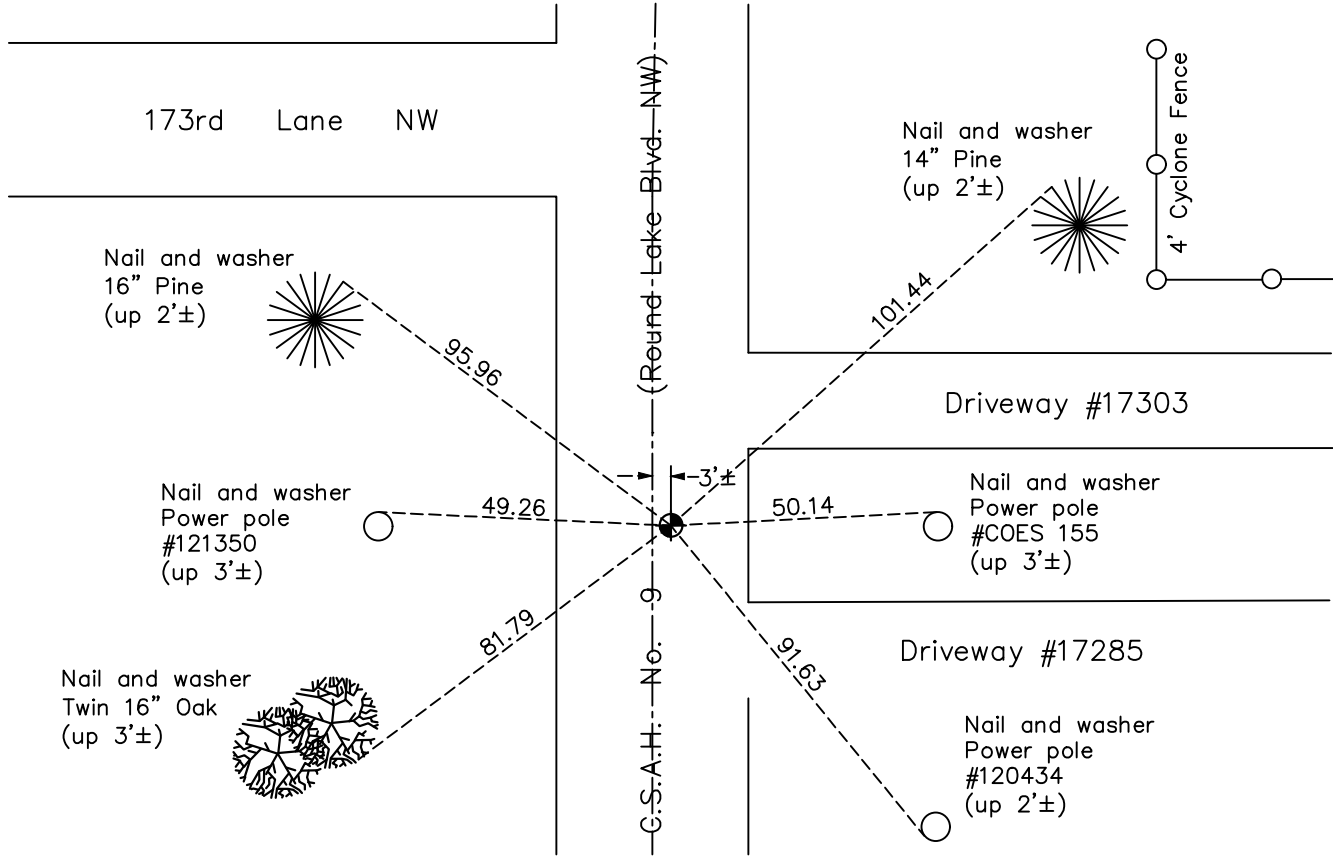
## Southwest Corner of Sec. 4 Township 32 Range 24

On the 7th day of July, 1960, the described corner was evidenced by an iron pipe over a granite monument found by the Highway Department

and to perpetuate the location of said corner, at the exact location thereof, a permanent marker was placed consisting of a cast iron monument

AND on the 13th day of October, 2020, said permanent marker was found and the ties were updated

Updated reference ties are as shown below.



Revision Date  
 12/30/20

N.A.D. 1983 Coordinates  
 (1996 Adjustment)

County Project Coordinates	
Northing	190860.7229
Easting	479356.7043
Date	8/07/00

I hereby certify that this United States public land survey monument record is correct and complete to the best of my knowledge and belief.  
*David M. Zieglermeier* Date 7/28/21  
 David M. Zieglermeier, Anoka County Surveyor  
 Minnesota License Number 46179

# HISTORY OF GOVERNMENT CORNER

Page No. 24

County of Anoka

State of Minnesota

## Southwest Corner of Sec. 4 Township 32 Range 24

### **CORNER HISTORY:**

DATE UNKNOWN – Anoka County Highway Department found 6” X 6” granite monument in centerline of Round Lake Road and 3’± south of power line with an iron pipe on top of granite. Established ties to monument.

July 7, 1960 – Replaced iron pipe with a cast iron monument down 4”± . Updated ties.

August 22, 1964 – Found cast iron monument and updated ties.

July 8, 1968 – Found cast iron monument and updated ties.

June 14, 1972 – Found cast iron monument and updated ties.

May 26, 1976 – Found cast iron monument and updated ties.

May 30, 1979 – Found cast iron monument and updated ties.

September 3, 1982 – Found cast iron monument and updated ties.

May 29, 1985 – Found cast iron monument and updated ties.

August 10, 1988 – Found cast iron monument and updated ties.

July 15, 1993 – Found cast iron monument and updated ties.

August 7, 2000 – Found cast iron monument and established NAD 1983 (1996 Adjustment) Anoka County Project Coordinates by Static GPS methods. Updated ties.

July 19, 2001 – Set construction ties and removed cast iron monument prior to road construction.

February 11, 2011 – Found cast iron monument and updated ties.

January 26, 2016 – Found cast iron monument and updated ties.

October 13, 2020 – Found cast iron monument and updated ties.