

CERTIFICATE OF LOCATION OF GOVERNMENT CORNER

County of Anoka

State of Minnesota

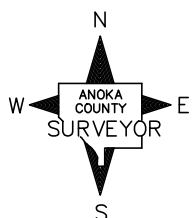
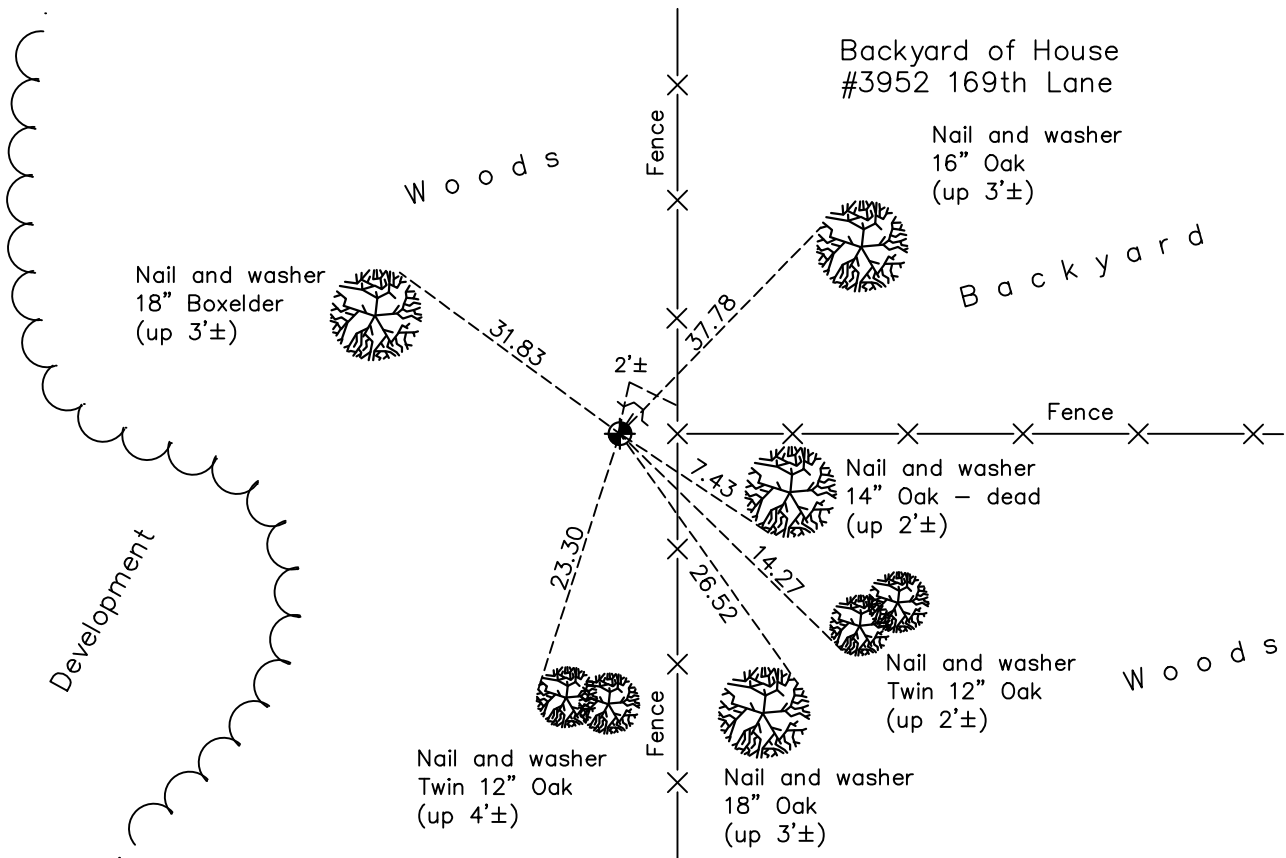
East 1/4 Corner of Sec. 7 Township 32 Range 24

On the 17th day of May, 1966, the described corner was evidenced by area resurvey

and to perpetuate the location of said corner, at the exact location thereof, a permanent marker was placed consisting of a cast iron monument

AND on the 8th day of February, 2023, said permanent marker was found down 0.3'± with a sign and post on northeast side, position coordinates verified correct by County RTK GPS method

Updated reference ties are as shown below.



Revision Date
2/09/2023

N.A.D. 1983 Coordinates
 (1996 Adjustment)

County Project Coordinates	
Northing	<u>188282.4293</u>
Easting	<u>474121.5602</u>
Date	<u>1/24/01</u>

I hereby certify that this United States public land survey monument record is correct and complete to the best of my knowledge and belief.

David Zieglermeier Date 3/1/23

David M. Zieglermeier, Anoka County Surveyor
 Minnesota License Number 46179

HISTORY OF GOVERNMENT CORNER

Page No. 30

County of Anoka

State of Minnesota

East 1/4 Corner of Sec. 7 Township 32 Range 24

CORNER HISTORY:

May 17, 1966 – Set cast iron monument flush with the surface using area resurvey and established ties to monument.

July 8, 1968 – Found cast iron monument and updated ties.

June 29, 1972 – Found cast iron monument and updated ties.

May 26, 1976 – Found cast iron monument and updated ties.

May 31, 1979 – Found cast iron monument and updated ties.

June 21, 1982 – Found cast iron monument and updated ties.

June 7, 1985 – Found cast iron monument and updated ties.

August 16, 1988 – Found cast iron monument and updated ties.

July 27, 1993 – Found cast iron monument and updated ties.

January 24, 2001 – Found cast iron monument with sign and post on the north side (date set unknown) and established NAD 1983 (1996 Adjustment) Anoka County Project Coordinates by Static GPS methods. Updated ties.

December 17, 2010 – Found cast iron monument flush with the surface and with a sign and post on the north side. Updated ties.

July 18, 2016 – Found cast iron monument down 0.3'± and updated ties.

October 12, 2020 – Found cast iron monument down 0.3'± and updated ties.

February 8, 2023 – Found cast iron monument down 0.3'± and position coordinates were verified as correct by County RTK GPS method.