

CERTIFICATE OF LOCATION OF GOVERNMENT CORNER

County of Anoka

State of Minnesota

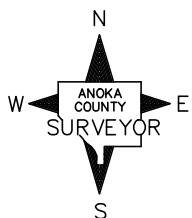
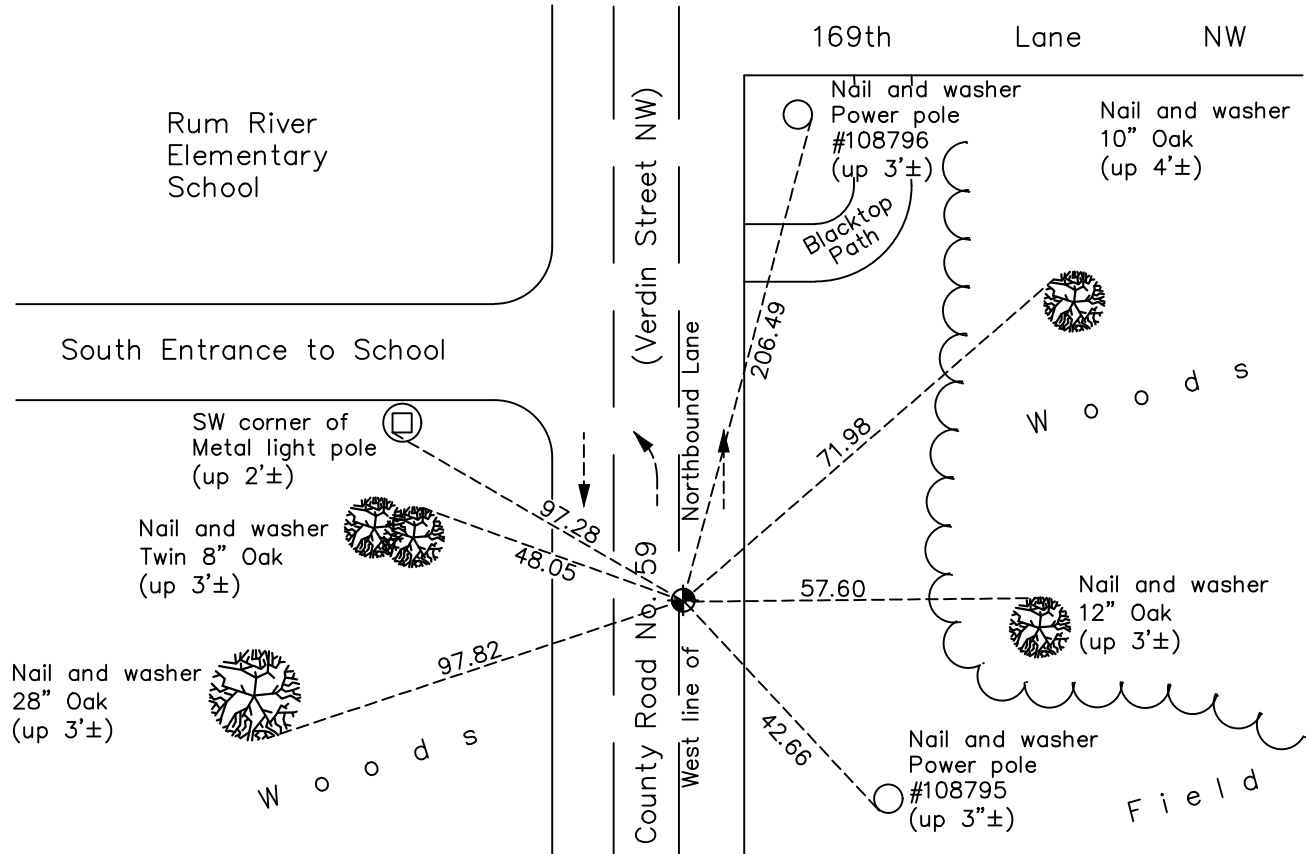
East 1/4 Corner of Sec. 9 Township 32 Range 24

On the 28th day of January, 1964, the described corner was evidenced by area resurvey

and to perpetuate the location of said corner, at the exact location thereof, a permanent marker was placed consisting of a cast iron monument

AND on the 12th day of October, 2020, said permanent marker was found flush with the surface and ties were updated

Updated reference ties are as shown below.



N.A.D. 1983 Coordinates
(1996 Adjustment)

County Project Coordinates	
Northing	188239.1804
Easting	484650.2698
Date	7/13/00

Revision Date
01/14/21

I hereby certify that this United States public land survey monument record is correct and complete to the best of my knowledge and belief.
David M Zieglsmeier Date 7/28/21
 David M. Zieglsmeier, Anoka County Surveyor
 Minnesota License Number 46179

HISTORY OF GOVERNMENT CORNER

County of Anoka

State of Minnesota

East 1/4 Corner of Sec. 9 Township 32 Range 24

CORNER HISTORY:

January 28, 1964 – Set P.K. nail using area resurvey and established ties to monument.

July 31, 1964 – Replaced P.K. nail with a cast iron monument and updated ties.

July 10, 1968 – Found cast iron monument and updated ties.

June 22, 1972 – Found cast iron monument and updated ties.

May 27, 1976 – Found cast iron monument and set P.K. nails north and east of monument. Updated ties.

May 31, 1979 – Found cast iron monument and updated ties.

June 23, 1982 – Found cast iron monument and updated ties.

May 30, 1985 – Found cast iron monument and updated ties.

July 27, 1988 – Found cast iron monument and updated ties.

July 21, 1993 – Found cast iron monument and updated ties.

September 10, 1996 – Found cast iron monument and updated ties.

May 12, 1997 – Found cast iron monument and updated ties.

July 13, 2000 – Found cast iron monument and established NAD 1983 (1996 Adjustment) Anoka County Project Coordinates by Static GPS methods. Updated ties.

October 18, 2010 – Found cast iron monument down $0.2' \pm$ and updated ties.

August 17, 2012– Added spacer/s and replaced top of cast iron monument after road overlay. Monument is flush with surface.

January 25, 2016 – Found cast iron monument flush with the surface and updated ties.

October 12, 2020 – Found cast iron monument flush with the surface and updated ties.