

CERTIFICATE OF LOCATION OF GOVERNMENT CORNER

County of Anoka

State of Minnesota

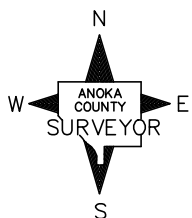
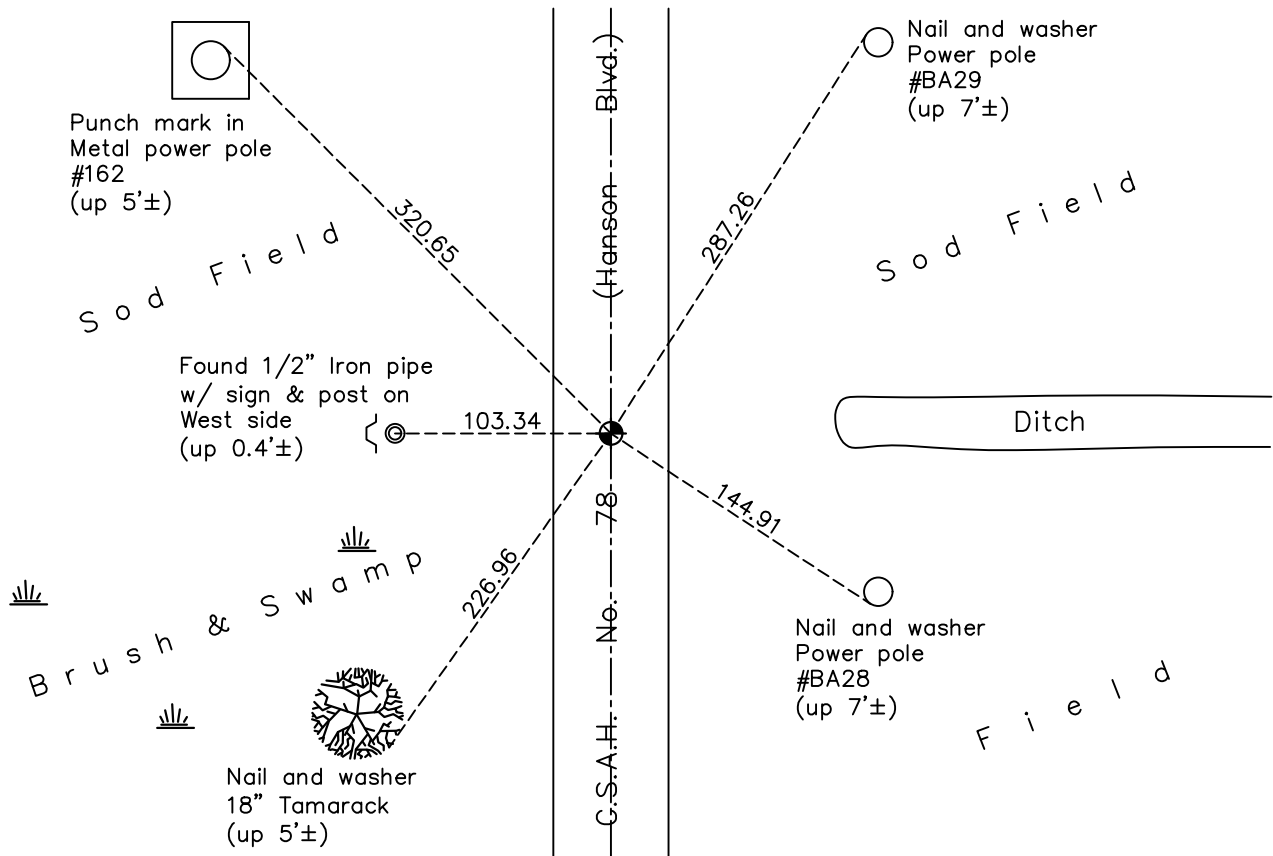
West 1/4 Corner of Sec. 11 Township 32 Range 24

On the 3rd day of January, 1962, the described corner was evidenced by area resurvey

and to perpetuate the location of said corner, at the exact location thereof, a permanent marker was placed consisting of a cast iron monument with P.K. Nails 2.00' North and East

AND on the 20th day of October, 2020, said permanent marker was found flush with the surface, on the centerline, and updated ties

Updated reference ties are as shown below.



Revision Date
 01/14/21

N.A.D. 1983 Coordinates
 (1996 Adjustment)

County Project Coordinates	
Northing	188113.0049
Easting	489910.9966
Date	10/01/93

I hereby certify that this United States public land survey monument record is correct and complete to the best of my knowledge and belief.
David M Zieglermeier Date 7/28/21
 David M. Zieglermeier, Anoka County Surveyor
 Minnesota License Number 46179

HISTORY OF GOVERNMENT CORNER

Page No. 33

County of Anoka

State of Minnesota

West 1/4 Corner of Sec. 11 Township 32 Range 24

CORNER HISTORY:

January 3, 1962 – Set 12' X 1 1/2" iron pipe in swamp using area resurvey. Top 3'± is above ground with 6" painted red and white bands. No features available to establish ties.

Summer 1968 & 1972 – Area too wet to access corner.

March 21, 1983 – Found 1 1/2" red and white iron pipe bent over.

April 12, 1983 – Replaced bent 1 1/2" red and white iron pipe with a new red and white iron pipe using area resurvey. Also set steel witness posts with punchmarks and signs attached to be used as ties.

December 3, 1984 – Found red and white iron pipe and updated ties.

July 23, 1987 – Set construction ties using 1/2" iron pipes with signs and posts set near iron pipes prior to road construction.

May 24, 1988 – Set cast iron monument flush with surface after road construction using construction ties. Also set P.K. nails 2.00' north and east of monument and updated ties.

July 15, 1993 – Found cast iron monument and updated ties.

October 1, 1993 – Found cast iron monument and established NAD 1983 (1996 Adjustment) Anoka County Project Coordinates by Static GPS methods. Updated ties.

January 28, 2011 – Found cast iron monument broken.

February 7, 2011 – Verified position of broken cast iron monument by Static GPS methods.

February 15, 2011 – Replaced broken cast iron monument with a new cast iron monument and updated ties.

June 8, 2012 – Found cast iron monument missing.

August 15, 2012 – Reset position of missing cast iron monument with a P.K. nail using VRS methods and verified position by Static GPS methods.

August 27, 2012 – Replaced P.K. nail with a new cast iron monument and verified that ties were accurate.

January 22, 2016 – Found cast iron monument flush with the surface and updated ties.

October 20, 2020 – Found cast iron monument flush with the surface and updated ties.