

CERTIFICATE OF LOCATION OF GOVERNMENT CORNER

County of Anoka

State of Minnesota

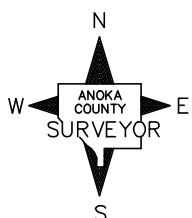
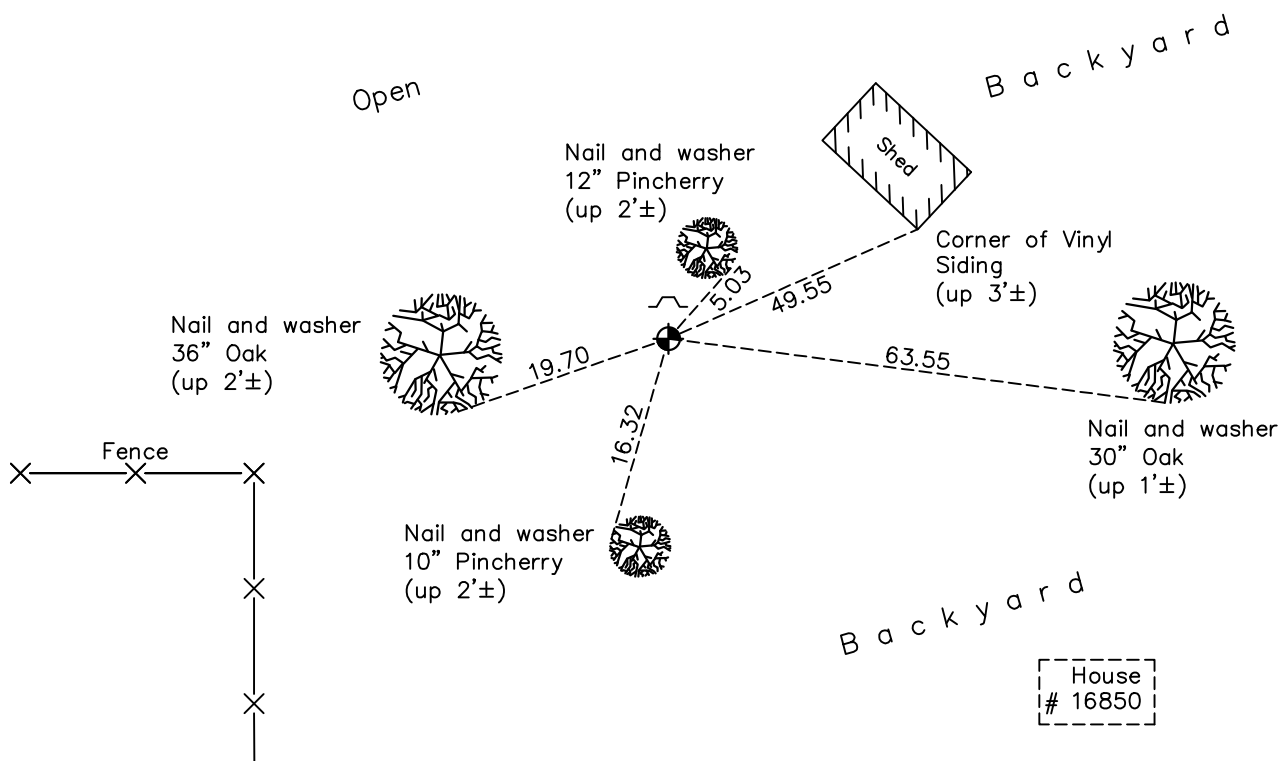
East 1/4 Corner of Sec. 12 Township 32 Range 24

On the 14th day of August, 1964, the described corner was evidenced by a 1 1/4" iron pipe

and to perpetuate the location of said corner, at the exact location thereof, a permanent marker was placed consisting of a cast iron monument with a sign and post on the north side

AND on the 16th day of October, 2020, said permanent marker was found down 0.1'± and the ties were updated

Updated reference ties are as shown below.



Revision Date
01/14/21

N.A.D. 1983 Coordinates
(1996 Adjustment)

County Project Coordinates	
Northing	<u>187931.1731</u>
Easting	<u>500387.8424</u>
Date	<u>12/01/00</u>

I hereby certify that this United States public land survey monument record is correct and complete to the best of my knowledge and belief.

David M Zieglsmeier Date 7/28/21

David M. Zieglsmeier, Anoka County Surveyor
Minnesota License Number 46179

HISTORY OF GOVERNMENT CORNER

County of Anoka

State of Minnesota

East 1/4 Corner of Sec. 12 Township 32 Range 24

CORNER HISTORY:

August 14, 1964 – Found 1 1/4” iron pipe up 0.3'± using 1960 ties by N.C. Hoium. Corner is under north – south fence line. Established ties to monument.

July 22, 1966 – Found 1 1/4” iron pipe and updated ties.

July 24, 1968 – Replaced 1 1/4” iron pipe with a cast iron monument set up 0.1'±. Updated ties.

June 21, 1972 – Found cast iron monument and updated ties.

May 27, 1976 – Found cast iron monument and updated ties.

June 1, 1979 – Found cast iron monument and updated ties.

June 30, 1982 – Found cast iron monument and updated ties.

June 10, 1985 – Found cast iron monument and updated ties.

August 15, 1988 – Found cast iron monument with sign and post on north side of monument (date set unknown) and updated ties.

December 1, 2000 – Found cast iron monument and established NAD 1983 (1996 Adjustment) Anoka County Project Coordinates by Static GPS methods. Updated ties.

January 25, 2011 – Found cast iron monument with sign and post on north side of monument and updated ties.

January 13, 2016 – Found cast iron monument down 0.1'± with sign and post on north side of monument and updated ties.

October 16, 2020 – Found cast iron monument down 0.1'± with sign and post on north side of monument and updated ties.