

CERTIFICATE OF LOCATION OF GOVERNMENT CORNER

County of Anoka

State of Minnesota

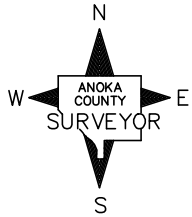
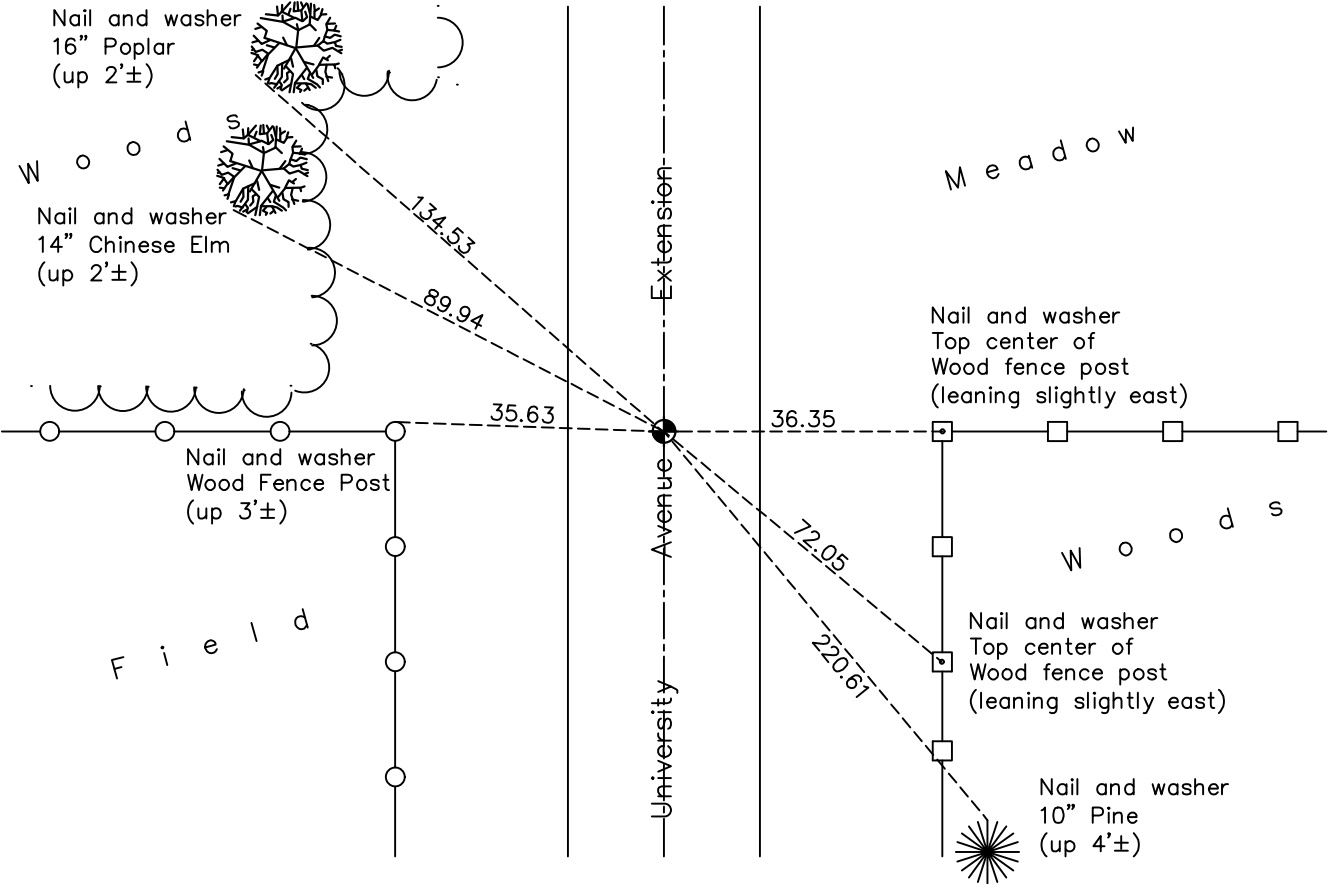
Northeast Corner of Sec. 13 Township 32 Range 24

On the 28th day of December, 1962, the described corner was evidenced by area resurvey

and to perpetuate the location of said corner, at the exact location thereof, a permanent marker was placed consisting of a cast iron monument

AND on the 6th day of October, 2020, said permanent marker was found broken. Reset with new CIM flush to surface and the ties were updated

Updated reference ties are as shown below.



Revision Date
 01/14/21

N.A.D. 1983 Coordinates
 (1996 Adjustment)

County Project Coordinates	
Northing	185300.0916
Easting	500392.9563
Date	10/23/00

I hereby certify that this United States public land survey monument record is correct and complete to the best of my knowledge and belief.
David M Zieglsmeier Date 7/28/21
 David M. Zieglsmeier, Anoka County Surveyor
 Minnesota License Number 46179

HISTORY OF GOVERNMENT CORNER

Page No. 37

County of Anoka

State of Minnesota

Northeast Corner of Sec. 13 Township 32 Range 24

CORNER HISTORY:

August 31, 1962 – Set red and white iron pipe up 3.5'±. Ties to be established at a later date because area is too wet.

December 28, 1962 – Set 1 1/4" X 8' iron pipe up 4'± with 6" painted red and white bands using area resurvey. Established ties to monument.

August 14, 1964 – Found red and white iron pipe and updated ties.

July 23, 1968 – Found red and white iron pipe and updated ties.

June 21, 1972 – Area too wet to access corner.

May 28, 1976 – Found red and white iron pipe and updated ties.

June 1, 1979 – Found red and white iron pipe and updated ties.

June 30, 1982 – Found red and white iron pipe and updated ties.

August 15, 1988 – Found red and white iron pipe and updated ties.

June 1, 1989 – Set cast iron monument flush with surface after road construction. Also set P.K. nails 2.00' north and east of monument and updated ties.

July 19, 1993 – Found cast iron monument and updated ties.

October 23, 2000 – Found cast iron monument and established NAD 1983 (1996 Adjustment) Anoka County Project Coordinates by Static GPS methods. Updated ties.

January 25, 2011 – Found cast iron monument and updated ties.

January 27, 2016 – Found cast iron monument down 0.2'± on centerline and updated ties.

October 6, 2020 – Found cast iron monument down 0.2'± on centerline and updated ties.