

# CERTIFICATE OF LOCATION OF GOVERNMENT CORNER

County of Anoka

State of Minnesota

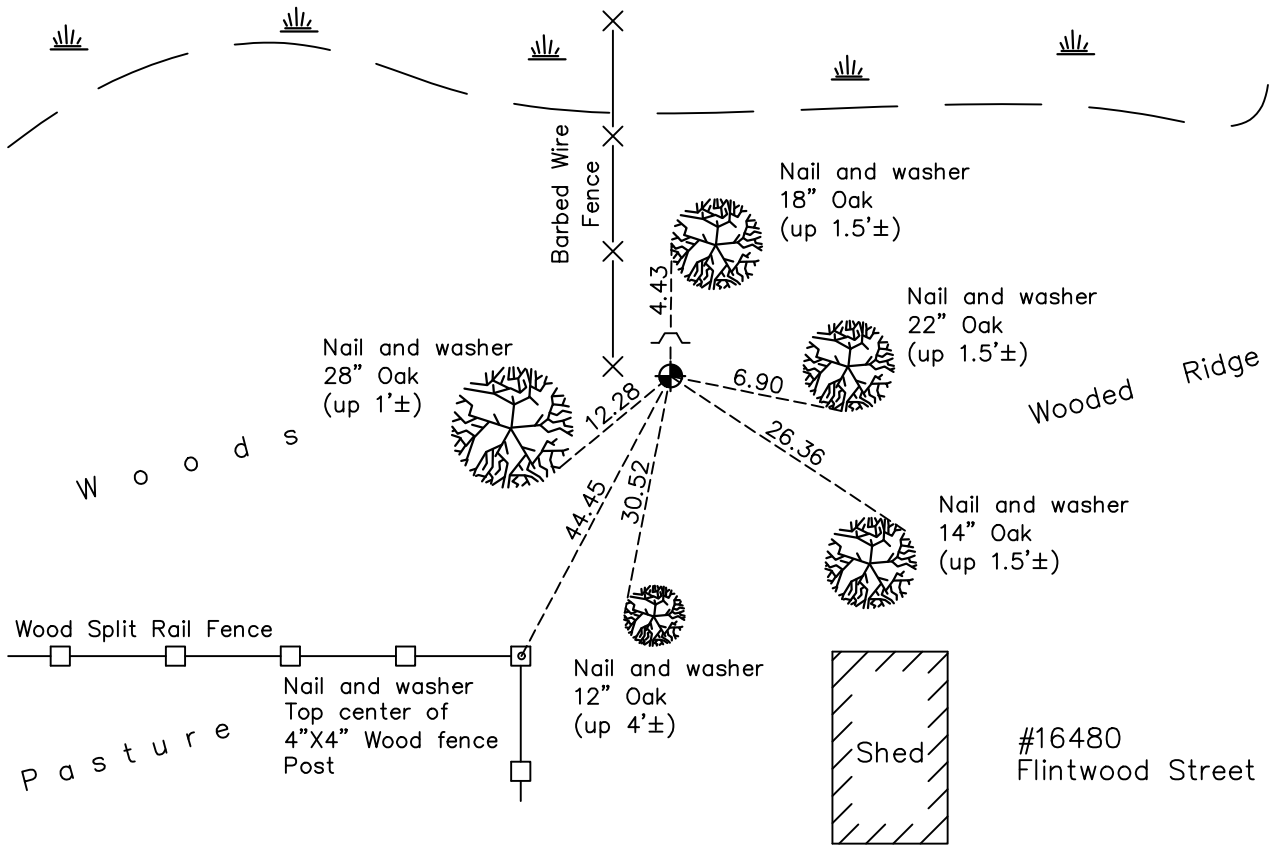
## South 1/4 Corner of Sec. 12 Township 32 Range 24

On the 31st day of August, 1962, the described corner was evidenced by area resurvey

and to perpetuate the location of said corner, at the exact location thereof, a permanent marker was placed consisting of a cast iron monument with a sign and post on the north side

AND on the 28th day of March, 2023, said permanent marker was found flush and verified position correct with published coordinates and compared updated ties to historical ties.

Updated reference ties are as shown below.



N  
W ANOKA COUNTY SURVEYOR E  
S

Revision Date  
4/07/2023

N.A.D. 1983 Coordinates  
(1996 Adjustment)

County Project Coordinates	
Northing	185348.3117
Easting	497768.0018
Date	12/01/00

I hereby certify that this United States public land survey monument record is correct and complete to the best of my knowledge and belief.

*David Zieglermeier* Date 12/6/23

David M. Zieglermeier, Anoka County Surveyor  
Minnesota License Number 46179

# HISTORY OF GOVERNMENT CORNER

Page No. 38

County of Anoka

State of Minnesota

## South 1/4 Corner of Sec. 12 Township 32 Range 24

### **CORNER HISTORY:**

August 31, 1962 – Set cast iron monument up 0.2'± using area resurvey. Monument is under east – west fence line and 1' east of fence to north. Established ties to monument.

August 14, 1964 – Found cast iron monument and updated ties.

July 24, 1968 – Found cast iron monument and updated ties.

June 21, 1972 – Found cast iron monument and updated ties.

May 28, 1976 – Found cast iron monument and updated ties.

June 1, 1979 – Found cast iron monument and updated ties.

June 17, 1982 – Found cast iron monument and updated ties.

August 15, 1988 – Found cast iron monument with sign and post on north side of monument (date set unknown) and updated ties.

July 27, 1993 – Found cast iron monument and updated ties.

December 1, 2000 – Found cast iron monument and established NAD 1983 (1996 Adjustment) Anoka County Project Coordinates by Static GPS methods. Updated ties.

December 15, 2010 – Found cast iron monument flush with the surface and with sign and post on north side of monument. Updated ties.

January 13, 2016 – Found cast iron monument flush with the surface and with sign and post on north side of monument. Updated ties.

September 29, 2020 – Found cast iron monument flush with the surface and with sign and post on north side of monument. Updated ties.

March 28, 2023 – Found cast iron monument flush, verified position correct with published coordinates using ACS RTK GPS method and compared updated ties to historical ties.