

# CERTIFICATE OF LOCATION OF GOVERNMENT CORNER

County of Anoka

State of Minnesota

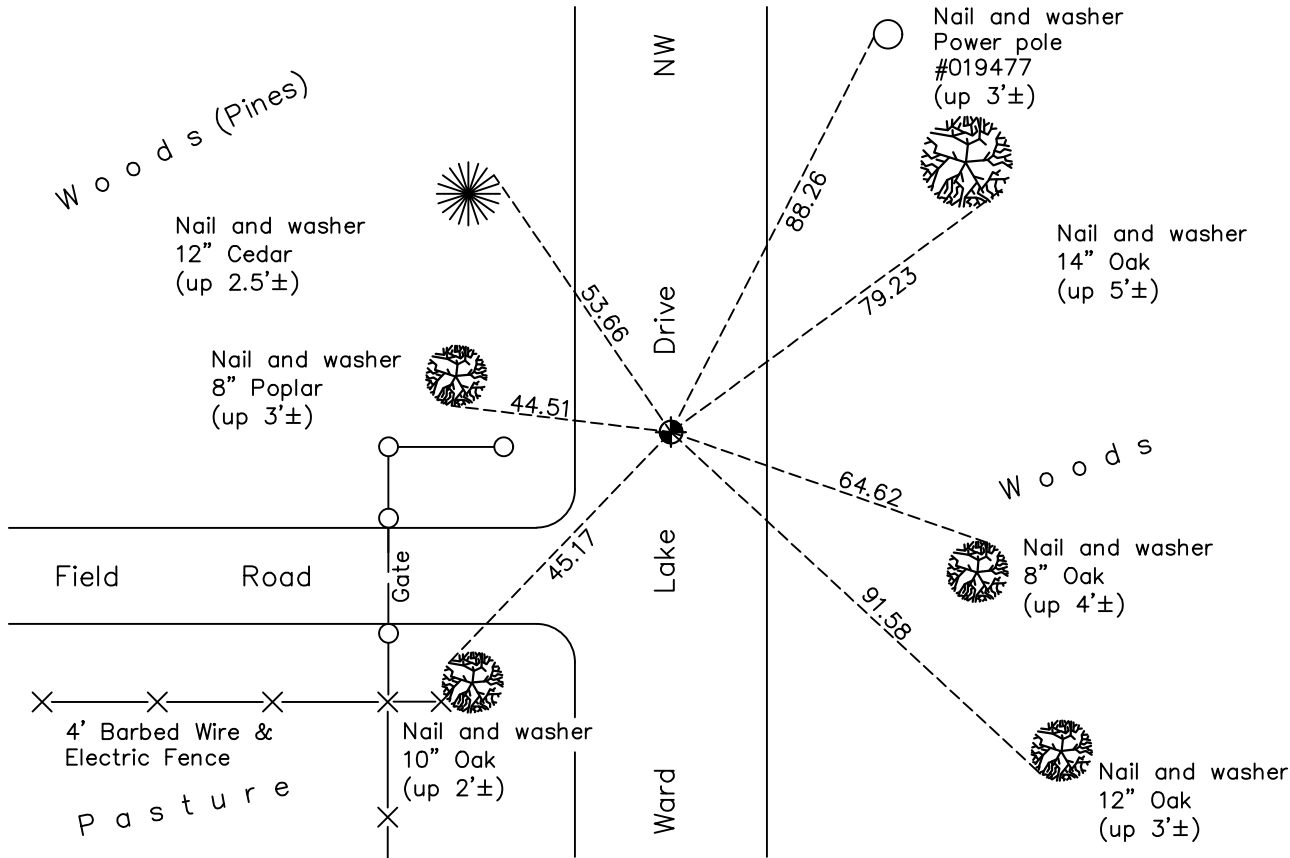
## Southeast Corner of Sec. 11 Township 32 Range 24

On the 31st day of August, 1962, the described corner was evidenced by area resurvey

and to perpetuate the location of said corner, at the exact location thereof, a permanent marker was placed consisting of a cast iron monument

AND on the 6th day of October, 2020, said permanent marker was found Flush and the ties were updated

Updated reference ties are as shown below.



Revision Date  
 01/22/21

N.A.D. 1983 Coordinates  
 (1996 Adjustment)

County Project Coordinates	
Northing	185373.8574
Easting	495140.1800
Date	10/12/00

I hereby certify that this United States public land survey monument record is correct and complete to the best of my knowledge and belief.  
*David M Zieglmeier* Date 7/28/21  
 David M. Zieglmeier, Anoka County Surveyor  
 Minnesota License Number 46179

# HISTORY OF GOVERNMENT CORNER

County of Anoka

State of Minnesota

## Southeast Corner of Sec. 11 Township 32 Range 24

### **CORNER HISTORY:**

August 31, 1962 – Set cast iron monument down 0.3'± using area resurvey and established ties to monument.

August 14, 1964 – Found cast iron monument and updated ties.

May 29, 1968 – Found cast iron monument and updated ties.

June 21, 1972 – Found cast iron monument and updated ties.

May 28, 1976 – Found cast iron monument and updated ties.

May 31, 1979 – Found cast iron monument and updated ties.

June 17, 1982 – Found cast iron monument and updated ties.

June 3, 1985 – Found cast iron monument and updated ties.

August 15, 1988 – Found cast iron monument and updated ties.

July 11, 1989 – Replaced cast iron monument with a 1/2" iron pipe with "Anoka County Surveyor" cap. Updated ties.

August 21, 1989 – Replaced 1/2" iron pipe with a cast iron monument. Updated ties.

July 21, 1993 – Found cast iron monument and updated ties.

October 12, 2000 – Found cast iron monument and established NAD 1983 (1996 Adjustment) Anoka County Project Coordinates by Static GPS methods. Updated ties.

October 13, 2010 – Found cast iron monument up 0.02'± and updated ties.

January 20, 2016 – Found cast iron monument up 0.02'± and updated ties.

October 6, 2020 – Found cast iron monument flush and updated ties.