

CERTIFICATE OF LOCATION OF GOVERNMENT CORNER

County of Anoka

State of Minnesota

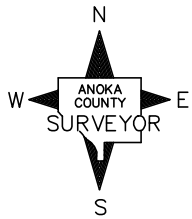
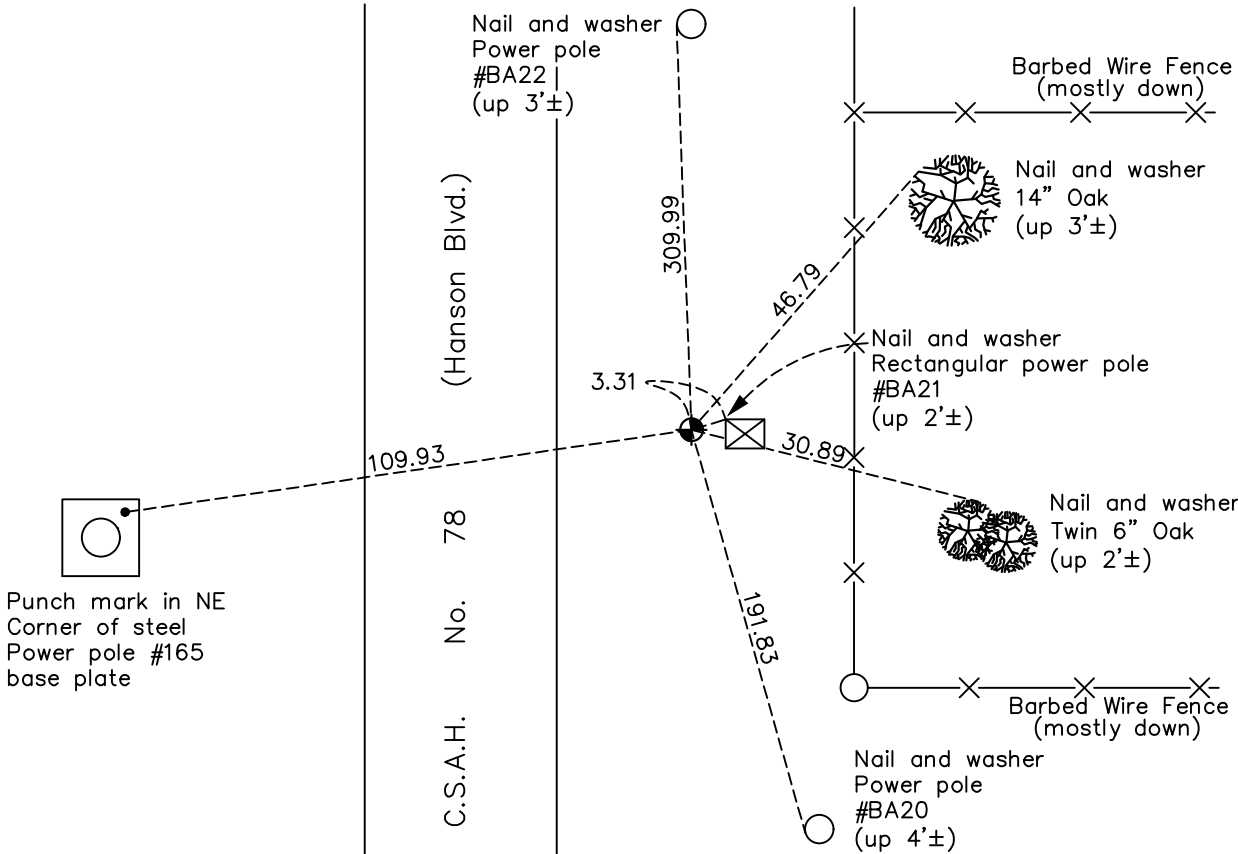
Southwest Corner of Sec. 11 Township 32 Range 24

On the 2nd day of January, 1963, the described corner was evidenced by area resurvey

and to perpetuate the location of said corner, at the exact location thereof, a permanent marker was placed consisting of a cast iron monument down 1'±. A sign was placed on power pole #BA21

AND on the 16th day of October, 2020, said permanent marker was found down 1'± and the ties were updated. A sign was placed on power pole #BA21.

Updated reference ties are as shown below.



Revision Date
 01/22/21

N.A.D. 1983 Coordinates
 (1996 Adjustment)

County Project Coordinates	
Northing	185525.0146
Easting	489901.2418
Date	8/07/00

I hereby certify that this United States public land survey monument record is correct and complete to the best of my knowledge and belief.
David M Zieglmeier Date 7/28/21
 David M. Zieglmeier, Anoka County Surveyor
 Minnesota License Number 46179

HISTORY OF GOVERNMENT CORNER

Page No. 41

County of Anoka

State of Minnesota

Southwest Corner of Sec. 11 Township 32 Range 24

CORNER HISTORY:

September 5, 1962 – Set cast iron monument using area resurvey and established ties to monument.

January 2, 1963 – Reset cast iron monument in better location using area resurvey and re-established ties to monument.

August 17, 1964 – Found cast iron monument and updated ties.

July 12, 1968 – Found cast iron monument and updated ties.

June 26, 1972 – Found cast iron monument and updated ties.

May 28, 1976 – Found cast iron monument and updated ties.

June 1, 1979 – Found cast iron monument and updated ties.

June 22, 1982 – Found cast iron monument and updated ties.

May 31, 1985 – Found cast iron monument and updated ties.

July 24, 1987 – Set construction ties using 1/2" iron pipe with sign and post prior to road construction.

May 24, 1988 – Set cast iron monument down 0.5'± after road construction using construction ties. Updated ties.

July 19, 1993 – Found cast iron monument and updated ties.

August 7, 2000 – Found cast iron monument and established NAD 1983 (1996 Adjustment) Anoka County Project Coordinates by Static GPS methods. Updated ties.

January 28, 2011 – Unable to find cast iron monument.

February 15, 2011 – Found cast iron monument down 1'± and updated ties. Set sign on power pole no. BA21 next to monument.

January 14, 2016 – Found cast iron monument down 1'±, found sign on power pole no. BA21 next to monument and updated ties.

October 16, 2020 – Found cast iron monument down 1'±, found sign on power pole no. BA21 next to monument and updated ties.