

CERTIFICATE OF LOCATION OF GOVERNMENT CORNER

County of Anoka

State of Minnesota

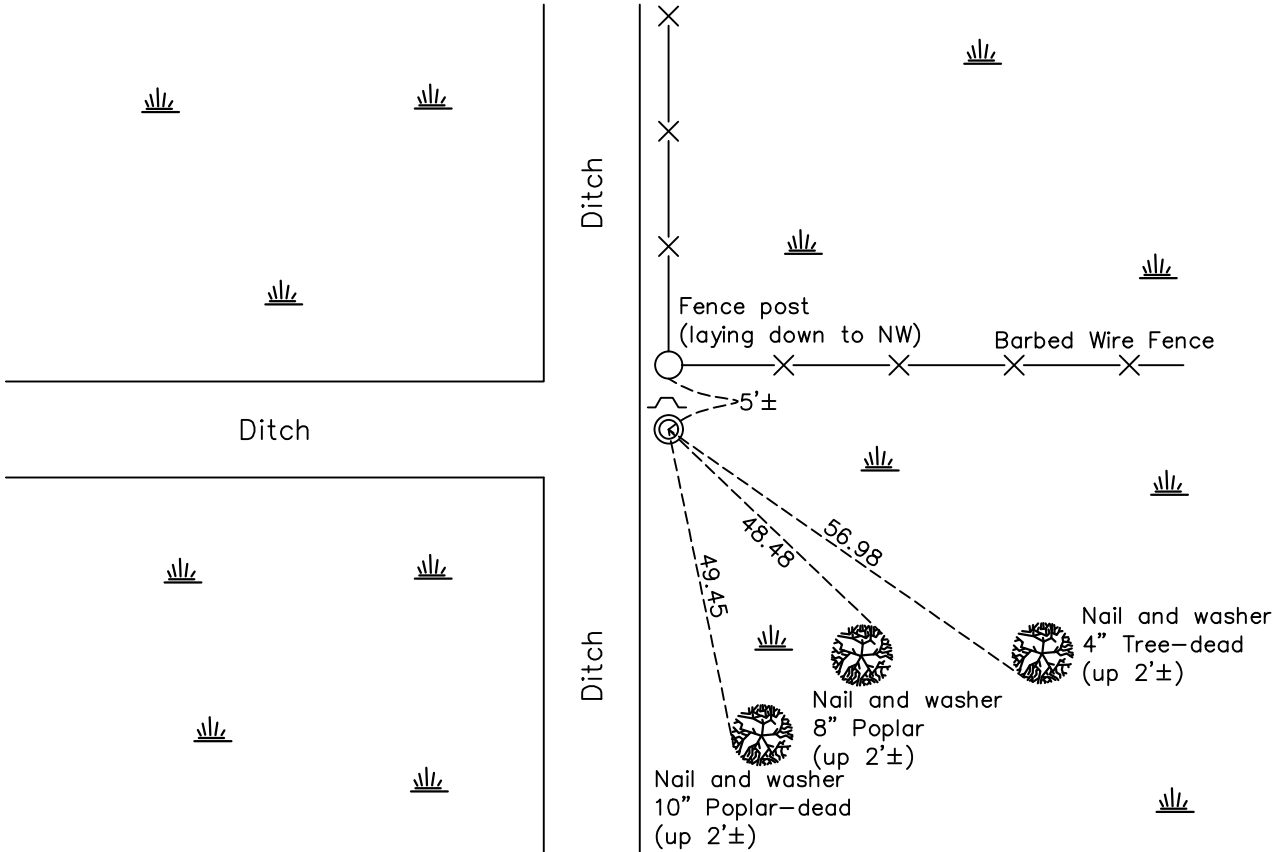
North 1/4 Corner of Sec. 15 Township 32 Range 24

On the 29th day of January, 1964, the described corner was evidenced by area resurvey

and to perpetuate the location of said corner, at the exact location thereof, a permanent marker was placed consisting of a 1.5" red and white iron pipe up 3 1/2'± with a sign and post 1'± north of iron pipe

AND on the 27th day of January, 2021, said permanent marker was found with paint worn off and sign & post 1'± north of iron pipe and the ties were updated.

Updated reference ties are as shown below.



Revision Date
 1/27/21

N.A.D. 1983 Coordinates
 (1996 Adjustment)

County Project Coordinates	
Northing	185579.5786
Easting	487286.9328
Date	1/25/01

I hereby certify that this United States public land survey monument record is correct and complete to the best of my knowledge and belief.
David M. Zieglermeier Date 7/28/21
 David M. Zieglermeier, Anoka County Surveyor
 Minnesota License Number 46179

HISTORY OF GOVERNMENT CORNER

County of Anoka

State of Minnesota

North 1/4 Corner of Sec. 15 Township 32 Range 24

CORNER HISTORY:

January 29, 1964 – Set 1" X 9' iron pipe up 4'± using area resurvey and established ties to monument. Top 4' of monument has 6" red and white bands.

July 12, 1968 – Found 1" red and white iron pipe and updated ties.

June 26, 1972 – Found 1" red and white iron pipe and updated ties.

January 19, 1978 – Found 1" red and white iron pipe and updated ties.

June 6, 1985 – Found 1" red and white iron pipe and updated ties.

August 15, 1988 – Found 1" red and white iron pipe and updated ties.

January 18, 1994 – Found 1" red and white iron pipe and updated ties.

January 25, 2001 – Found 1" iron pipe (paint worn off) up 3.5'± and established NAD 1983 (1996 Adjustment) Anoka County Project Coordinates by Static GPS methods. Updated ties.

January 18, 2011 – Found 1" iron pipe and updated ties.

February 18, 2011 – Set sign and post 1'± north of 1" white iron pipe.

February 5, 2018 – Found 1.5" red and white iron pipe up 3.5'± with paint worn off and sign and post 1'± north.
Verified location of corner by VRS GPS methods and updated ties.

January 27, 2021 – Found 1.5" red and white iron pipe up 3.5'± with paint worn off and sign and post 1'± north.