

CERTIFICATE OF LOCATION OF GOVERNMENT CORNER

County of Anoka

State of Minnesota

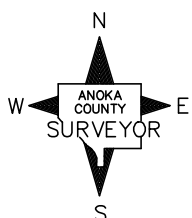
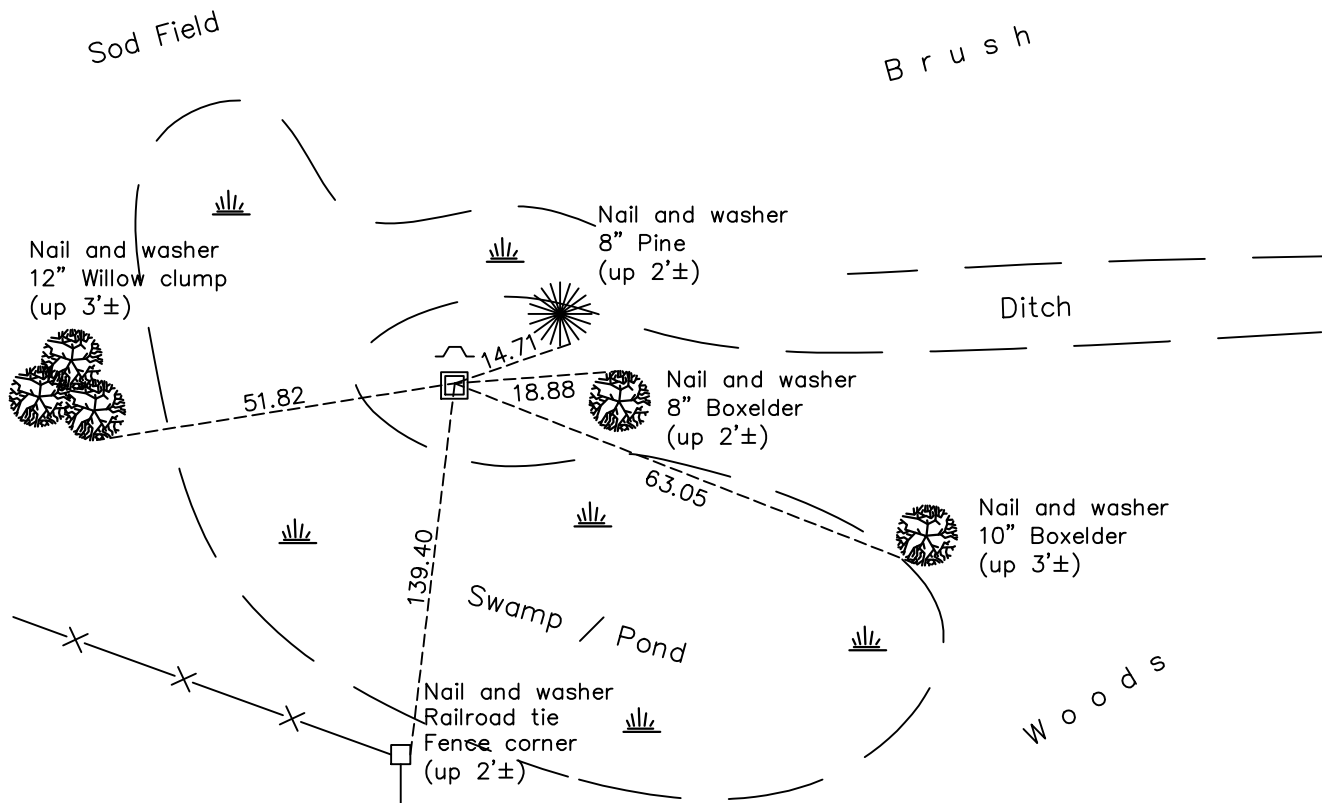
North 1/4 Corner of Sec. 16 Township 32 Range 24

On the 29th day of January, 1964, the described corner was evidenced by area resurvey

and to perpetuate the location of said corner, at the exact location thereof, a permanent marker was placed consisting of a red & white 2" square steel Telespar monument with "County Surveyor" cap with a sign and post on the north side

AND on the 17th day of November, 2020, said permanent marker was found and the ties were updated

Updated reference ties are as shown below.



Revision Date
01/22/21

N.A.D. 1983 Coordinates
(1996 Adjustment)

County Project Coordinates	
Northing	185606.1124
Easting	482008.1033
Date	1/25/01

I hereby certify that this United States public land survey monument record is correct and complete to the best of my knowledge and belief.
David M Zieglsmeier Date 7/28/21
 David M. Zieglsmeier, Anoka County Surveyor
 Minnesota License Number 46179

HISTORY OF GOVERNMENT CORNER

County of Anoka

State of Minnesota

North 1/4 Corner of Sec. 16 Township 32 Range 24

CORNER HISTORY:

January 29, 1964 – Set 3/4” iron pipe using area resurvey and established ties to monument.

August 6, 1964 – Replaced 3/4” iron pipe with a cast iron monument and updated ties.

July 11, 1968 – Found cast iron monument and updated ties.

June 22, 1972 – Found cast iron monument and updated ties.

May 28, 1976 – Found cast iron monument and updated ties.

May 7, 1979 – Found cast iron monument and updated ties.

June 1, 1979 – Found cast iron monument and updated ties.

June 29, 1982 – Found cast iron monument and updated ties.

June 10, 1985 – Found cast iron monument and updated ties.

August 17, 1988 – Found cast iron monument with sign and post on north side (date set unknown)and updated ties.

August 2, 1993 – Found cast iron monument and updated ties.

January 25, 2001 – Found cast iron monument and established NAD 1983 (1996 Adjustment) Anoka County Project Coordinates by Static GPS methods. Updated ties.

January 6, 2011 – Found cast iron monument leaning northwest up 0.2'± and updated ties. Sign and post was found leaning considerably to the south.

March 1, 2011 – Replaced cast iron monument with a red and white 2” square steel Telspar monument and ”County Surveyor” cap with a punchmark at location of corner. Verified location of corner by VRS GPS methods and updated ties. Sign and post was reset on north side of monument.

July 18, 2016 – Found a red & white 2” square steel Telespar monument with ”County Surveyor ”cap with sign and post on the north side. Updated ties.

November 17, 2020 – Found a red & white 2” square steel Telespar monument with ”County Surveyor ”cap with sign and post on the north side. Updated ties.