

# CERTIFICATE OF LOCATION OF GOVERNMENT CORNER

County of Anoka

State of Minnesota

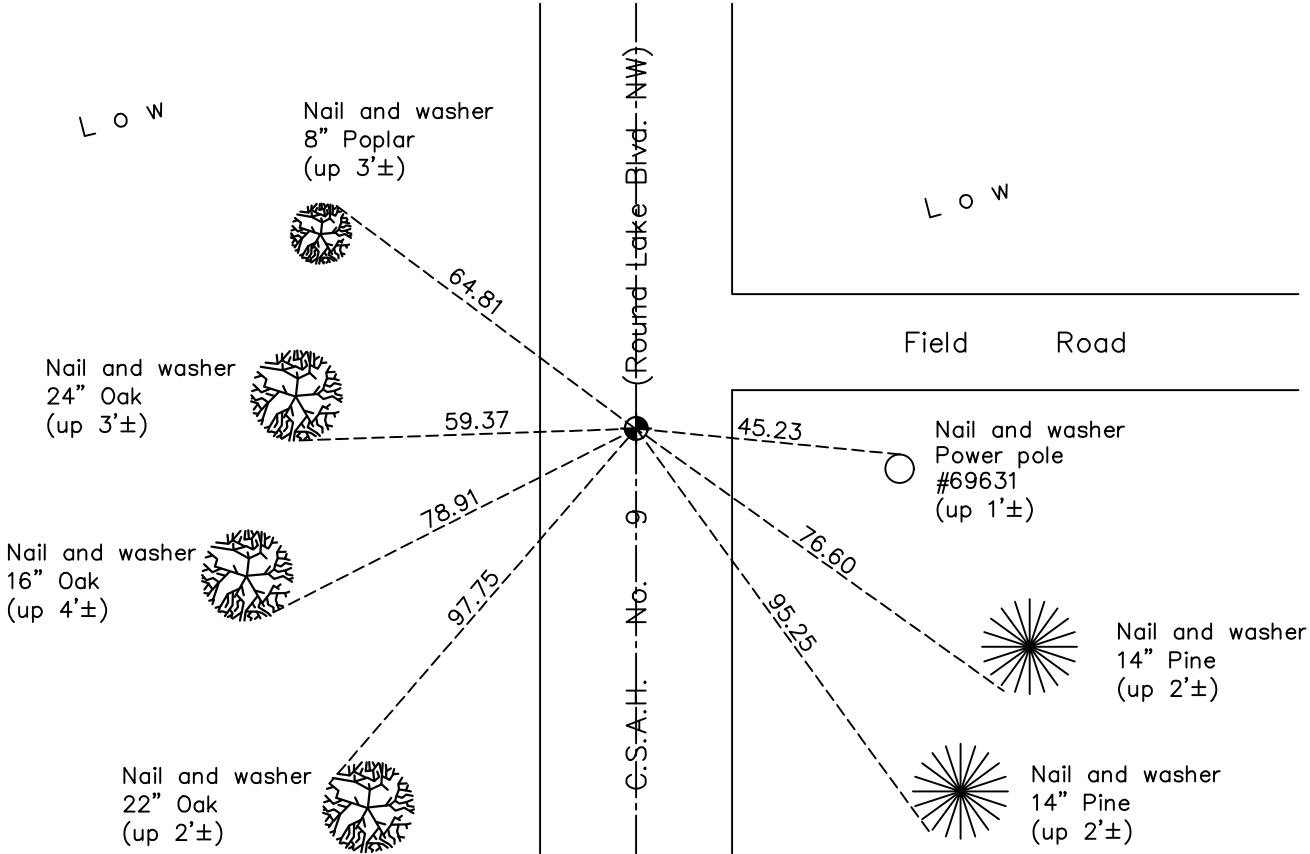
## Northwest Corner of Sec. 16 Township 32 Range 24

On the 6th day of March, 1962, the described corner was evidenced by a granite monument

and to perpetuate the location of said corner, at the exact location thereof, a permanent marker was placed consisting of a cast iron monument

AND on the 13th day of October, 2020, said permanent marker was found flush with the surface and the ties were updated

Updated reference ties are as shown below.



N.A.D. 1983 Coordinates  
(1996 Adjustment)

County Project Coordinates	
Northing	<u>185576.8881</u>
Easting	<u>479345.5540</u>
Date	<u>10/03/00</u>

Revision Date  
01/22/21

I hereby certify that this United States public land survey monument record is correct and complete to the best of my knowledge and belief.

*David M Zieglmeier* Date 7/28/21

David M. Zieglmeier, Anoka County Surveyor  
 Minnesota License Number 46179

# HISTORY OF GOVERNMENT CORNER

Page No. 45

County of Anoka

State of Minnesota

## Northwest Corner of Sec. 16 Township 32 Range 24

### **CORNER HISTORY:**

October 4, 1954 – Anoka County Highway Department found 6" X 6" granite monument. Established ties to monument.

March 6, 1962 – Found granite monument down 1' with iron pipe on north side and updated ties.

August 22, 1964 – Found granite monument and updated ties.

June 1965 – Set cast iron monument and updated ties.

July 9, 1968 – Found cast iron monument and updated ties.

June 23, 1972 – Found cast iron monument and updated ties.

May 28, 1976 – Found cast iron monument and updated ties.

June 1, 1979 – Found cast iron monument and updated ties.

September 3, 1982 – Found cast iron monument and updated ties.

May 29, 1985 – Found cast iron monument and updated ties.

August 9, 1988 – Found cast iron monument and updated ties.

July 15, 1993 – Found cast iron monument and updated ties.

October 3, 2000 – Found cast iron monument and established NAD 1983 (1996 Adjustment) Anoka County Project Coordinates by Static GPS methods. Updated ties.

July 18, 2001 – Set construction ties and removed cast iron monument prior to road construction. (Date reset is unknown).

February 15, 2011 – Found cast iron monument and updated ties.

January 26, 2016 – Found cast iron monument flush with the surface and updated ties.

October 13, 2020 – Found cast iron monument flush with the surface and updated ties.