

CERTIFICATE OF LOCATION OF GOVERNMENT CORNER

County of Anoka

State of Minnesota

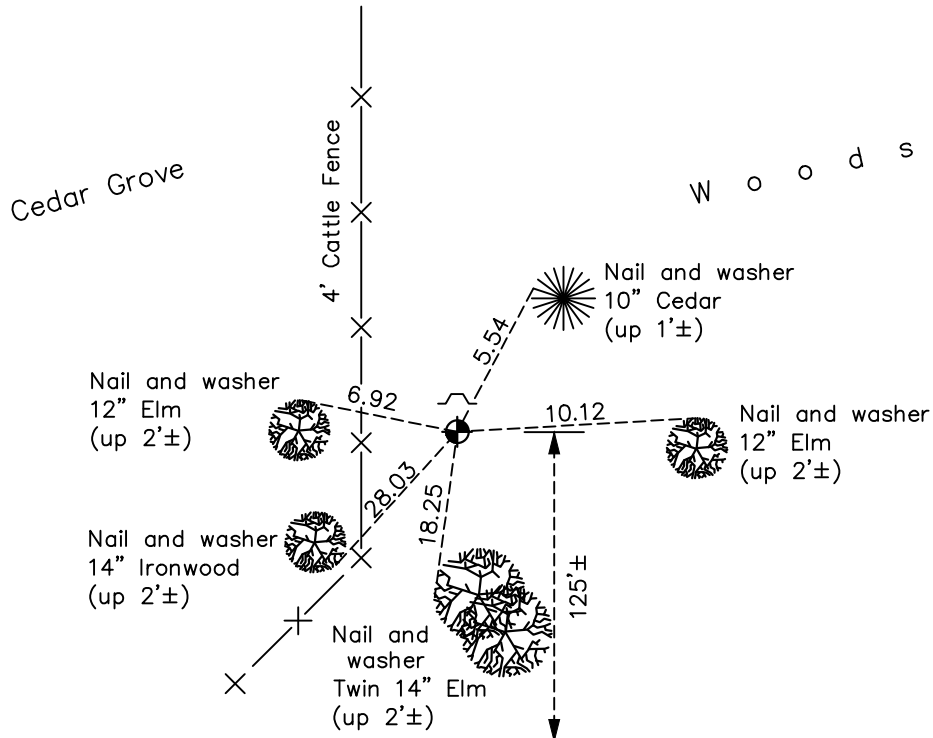
West 1/4 Corner of Sec. 18 Township 32 Range 24

On the 20th day of September, 1963, the described corner was evidenced by area resurvey

and to perpetuate the location of said corner, at the exact location thereof, a permanent marker was placed consisting of a cast iron monument with a sign and post on the north side

AND on the 23rd day of October, 2020, said permanent marker was found up 0.3'± and the ties were updated

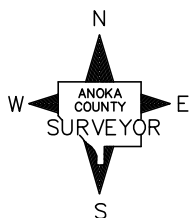
Updated reference ties are as shown below.



Driveway (blacktop)

End of City St.

160th Lane NW



N.A.D. 1983 Coordinates
(1996 Adjustment)

County Project Coordinates

Northing 183018.5023

Easting 468611.3406

Date 1/05/00

I hereby certify that this United States public land survey monument record is correct and complete to the best of my knowledge and belief.

David M. Zieglermeier Date 7/28/21

David M. Zieglermeier, Anoka County Surveyor

Minnesota License Number 46179

Revision Date

01/29/21

HISTORY OF GOVERNMENT CORNER

County of Anoka

State of Minnesota

West 1/4 Corner of Sec. 18 Township 32 Range 24

CORNER HISTORY:

September 20, 1963 – Set cast iron monument using area resurvey and established ties to monument.

August 26, 1964 – Found cast iron monument and updated ties.

July 10, 1968 – Found cast iron monument and updated ties.

July 7, 1972 – Found cast iron monument and updated ties.

June 1, 1976 – Found cast iron monument and updated ties.

June 4, 1979 – Found cast iron monument and updated ties.

June 25, 1982 – Found cast iron monument and updated ties.

June 7, 1985 – Found cast iron monument and updated ties.

August 8, 1988 – Found cast iron monument and updated ties.

January 5, 2000– Found cast iron monument with a sign and post on the north side (date set unknown)and established NAD 1983 (1996 Adjustment) Anoka County Project Coordinates by Static GPS methods. Updated ties.

November 2, 2010 – Found cast iron monument up 0.3'± and updated ties.

February 11, 2016 – Found cast iron monument up 0.3'± with a sign and post on the north side and updated ties.

October 23, 2020 – Found cast iron monument up 0.3'± and updated ties.