

CERTIFICATE OF LOCATION OF GOVERNMENT CORNER

County of Anoka

State of Minnesota

Witness Corner of Sec. 18 Township 32 Range 24

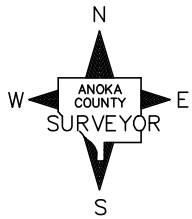
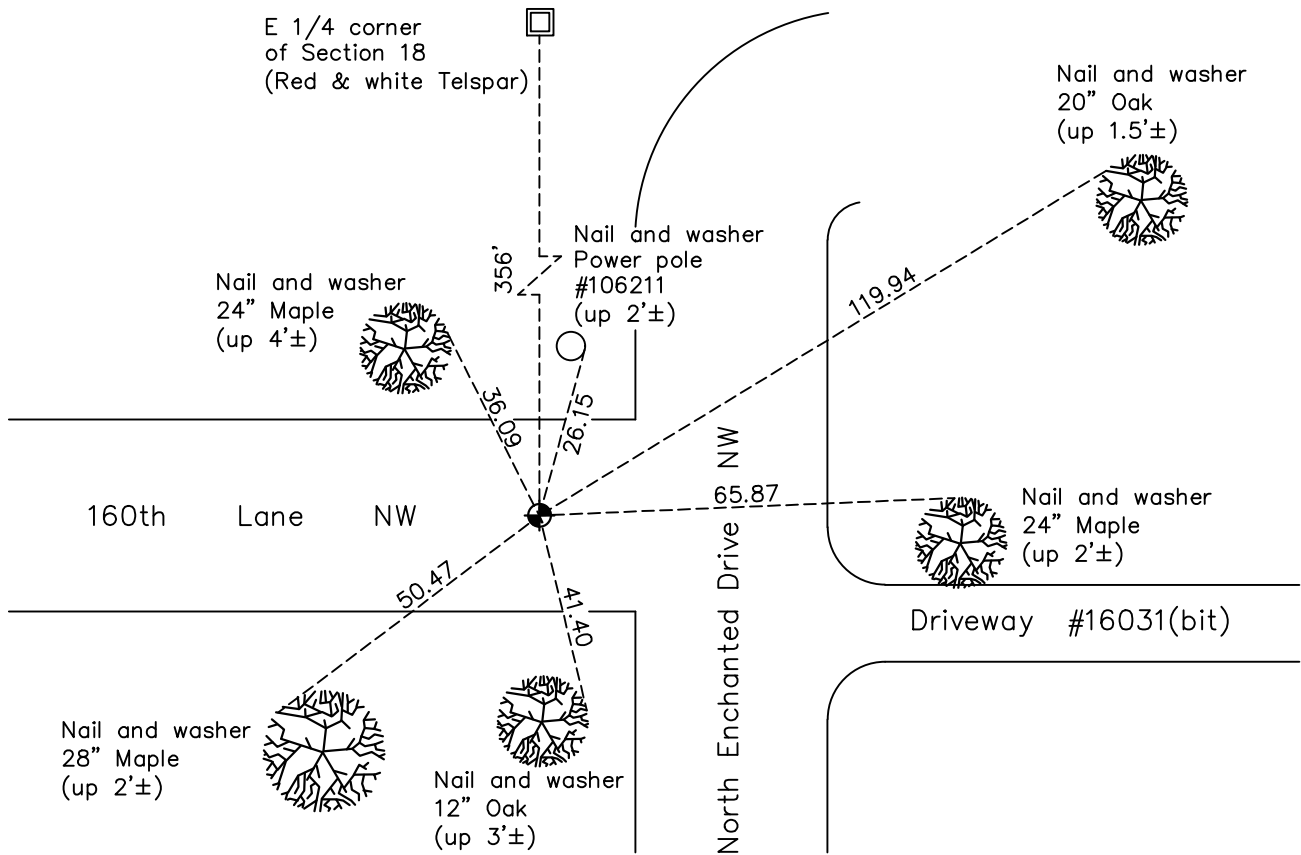
(on east line of SE 1/4)

On the 7th day of November, 2001, the described corner was evidenced by area resurvey and GPS

and to perpetuate the location of said corner, at the exact location thereof, a permanent marker was placed consisting of a cast iron monument

AND on the 24th day of August, 2020, said permanent marker was reset with a CIM after road construction, set flush to the surface, using static GPS methods and the ties were updated.

Updated reference ties are as shown below.



Revision Date
 09/28/2020

N.A.D. 1983 Coordinates
 (1996 Adjustment)

| County Project Coordinates | |
|----------------------------|-------------|
| Northing | 182676.2673 |
| Easting | 474142.0058 |
| Date | 11/07/01 |

I hereby certify that this United States public land survey monument record is correct and complete to the best of my knowledge and belief.
David M Zieglsmeier Date 7/28/21
 David M. Zieglsmeier, Anoka County Surveyor
 Minnesota License Number 46179

HISTORY OF GOVERNMENT CORNER

Page No. 50A

County of Anoka

State of Minnesota

Witness Corner of Sec. 18 Township 32 Range 24
(on east line of SE 1/4)

CORNER HISTORY:

November 7, 2001 – Set cast iron monument using area resurvey and established NAD 1983 (1996 Adjustment) Anoka County Project Coordinates by Static GPS methods. Also established ties to monument.

November 3, 2010 – Found cast iron monument flush with the surface and updated ties.

February 10, 2016 – Found cast iron monument flush with the surface and updated ties.

April 17, 2020 – Set construction ties and removed CIM prior to road construction.

August 24, 2020 – Set CIM flush with surface after road constuction using construction ties. Verified location of corner by Static GPS methods. Updated ties.