

# CERTIFICATE OF LOCATION OF GOVERNMENT CORNER

County of Anoka

State of Minnesota

## Witness Corner of Sec. 18 Township 32 Range 24

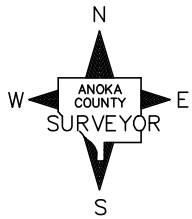
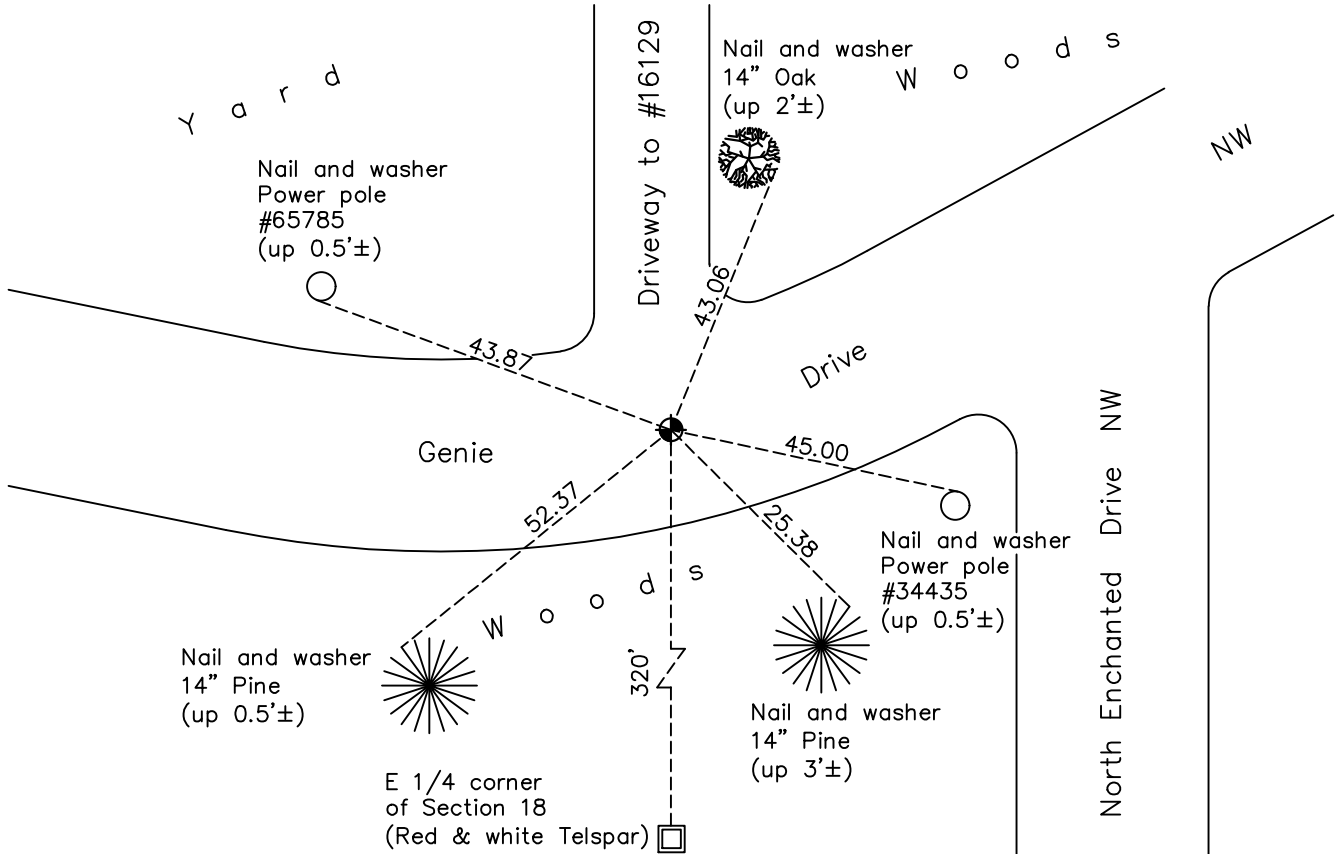
(on east line of NE 1/4)

On the 7th day of November, 2001, the described corner was evidenced by area resurvey and GPS

and to perpetuate the location of said corner, at the exact location thereof, a permanent marker was placed consisting of a cast iron monument

AND on the 24th day of August, 2020, said permanent marker was reset with a CIM after road construction, set flush to surface, using static GPS methods and the ties were updated.

Updated reference ties are as shown below.



Revision Date  
 09/28/20

N.A.D. 1983 Coordinates  
 (1996 Adjustment)

County Project Coordinates	
Northing	183361.3003
Easting	474147.3685
Date	11/07/01

I hereby certify that this United States public land survey monument record is correct and complete to the best of my knowledge and belief.  
*David M Zieglsmeier* Date 7/28/21  
 David M. Zieglsmeier, Anoka County Surveyor  
 Minnesota License Number 46179

# HISTORY OF GOVERNMENT CORNER

County of Anoka

State of Minnesota

Witness Corner of Sec. 18 Township 32 Range 24  
(on east line of NE 1/4)

## **CORNER HISTORY:**

November 7, 2001 – Set cast iron monument using area resurvey and established NAD 1983 (1996 Adjustment) Anoka County Project Coordinates by Static GPS methods. Also established ties to monument.

November 3, 2010 – Found cast iron monument flush with the surface and updated ties.

February 10, 2016 – Found cast iron monument flush with the surface and updated ties.

April 17, 2020 – Set Construction ties and removed CIM prior to road construction.

August 24, 2020 – Set CIM flush to surface after road construction using construction ties. Verified location by Static GPS methods. Updated ties.