

CERTIFICATE OF LOCATION OF GOVERNMENT CORNER

County of Anoka

State of Minnesota

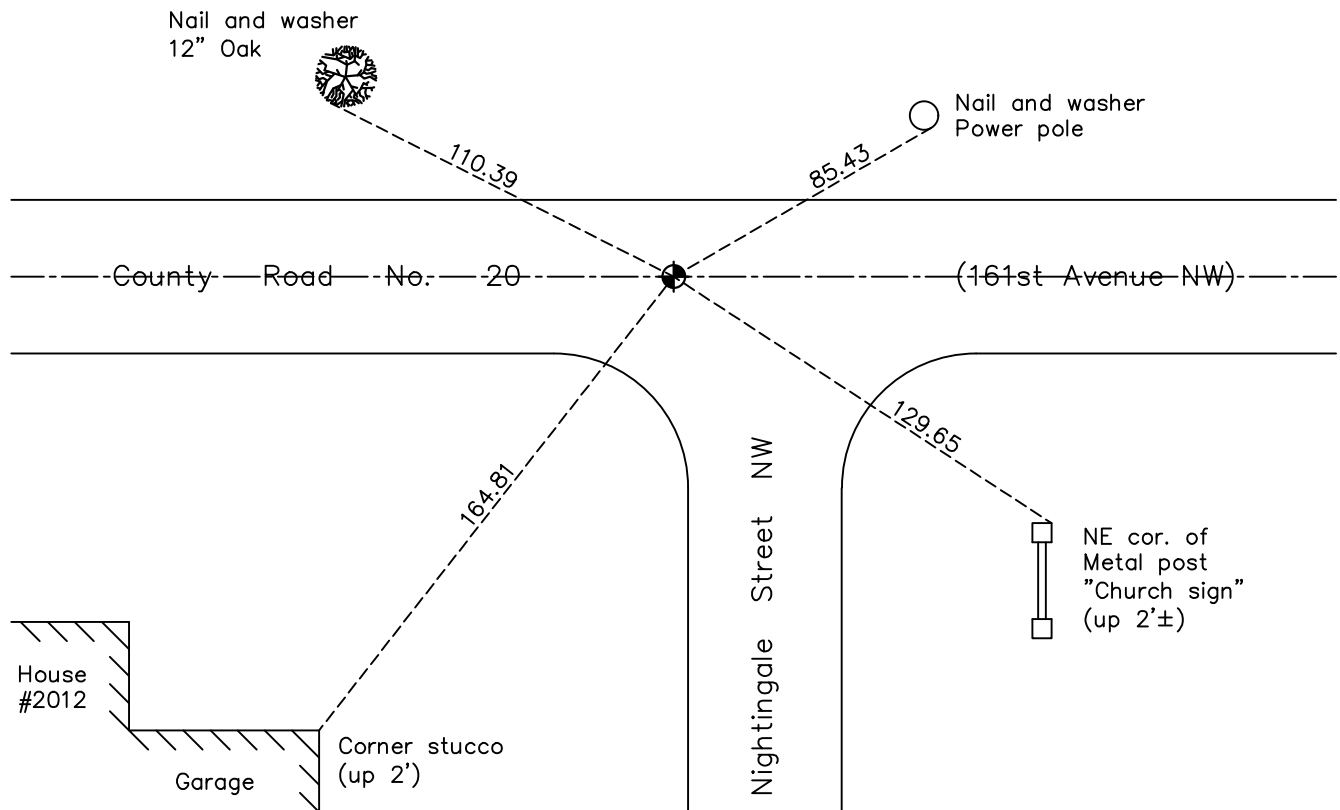
Center Corner of Sec. 15 Township 32 Range 24

On the 21st day of January, 1974, the described corner was evidenced by area resurvey

and to perpetuate the location of said corner, at the exact location thereof, a permanent marker was placed consisting of a cast iron monument

AND on the 23rd day of June, 2022, said permanent marker was found broken off and replaced with new cast iron monument flush. Verified position by VRS GPS methods. Updated ties.

Updated reference ties are as shown below.



N.A.D. 1983 Coordinates
(1996 Adjustment)

County Project Coordinates	
Northing	<u>182945.6045</u>
Easting	<u>487257.4031</u>
Date	<u>8/4/2000</u>

Revision Date
7/6/2022

I hereby certify that this United States public land survey monument record is correct and complete to the best of my knowledge and belief.

David Zieglmeier Date 1/18/23

David M. Zieglmeier, Anoka County Surveyor
Minnesota License Number 46179

HISTORY OF GOVERNMENT CORNER

Page No. 53A

County of Anoka

State of Minnesota

Center Corner of Sec. 15 Township 32 Range 24

CORNER HISTORY:

January 21, 1974 - Set 1/2" iron pipe using area resurvey. Established ties to iron pipe.

June 4, 1976 - Set cast iron monument and updated ties.

June 4, 1979 - Found cast iron monument and updated ties.

June 24, 1982 - Found cast iron monument and updated ties.

June 17, 1985 - Found cast iron monument and set construction ties prior to construction.

April 30, 1986 - Set cast iron monument flush after construction using construction ties. Updated corner ties.

August 3, 2000 - Found cast iron monument and updated ties. Established NAD 1983 (1996 adj.) Anoka County project coordinates by static GPS methods.

December 17, 2020 - Found cast iron monument broken off and down 0.8'± on centerline road. Updated ties. Verified position by static GPS methods.

June 23, 2022 - Found cast iron monument broken off and replaced with a new cast iron monument flush. Verified position by VRS GPS methods and updated ties.